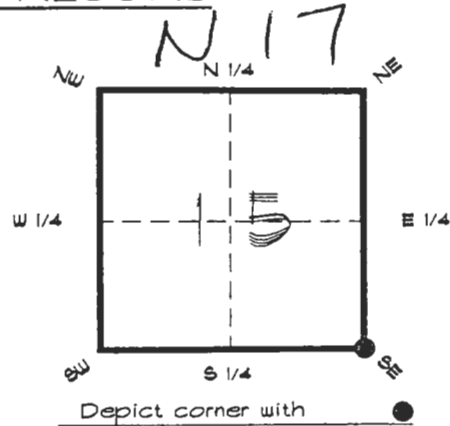


4121N17

FLORIDA DEPARTMENT OF ENVIRONMENTAL PROTECTION
CERTIFIED CORNER RECORD

CORNER DESCRIPTION:

S.E. corner of Section 15 ,
Twp 41 S. , Rge 21 E. ,
Tallahassee Base Meridian,
CHARLOTTE County(s), Florida.



MONUMENTATION DESCRIPTION:

Describe original monument and accessories, or subsequent restoration. Give sources of information. (If no attempt was made to search for the original monument and accessories, this information is not necessary.)

Description of corner evidence found:

SET CONCRETE MONUMENT BY SUBDIVISION PLAT DATA FROM MONUMENTATION ON MELPORT CIRCLE N.

State method(s) to determine corner location (lost corners only):

HORIZONTAL POSITION INFORMATION (if determined):

Latitude 26°54'05.56856" N Longitude 82°11'26.19620" W

Y(Northing) 284510.061 m X(Easting) 181065.665 m Zone FLW

Convergence -0°05'10.476" Scale factor 0.99994560

Coordinate determination (circle one): Field traverse GPS

Horizontal datum (circle one): NAD27 NAD83(1986) NAD83(1990) other (explain)

Order of accuracy as defined in Standards and Specifications for Geodetic Control Networks published by the Federal Geodetic Control Committee (circle one): 1st, 2nd, 3rd, class _____

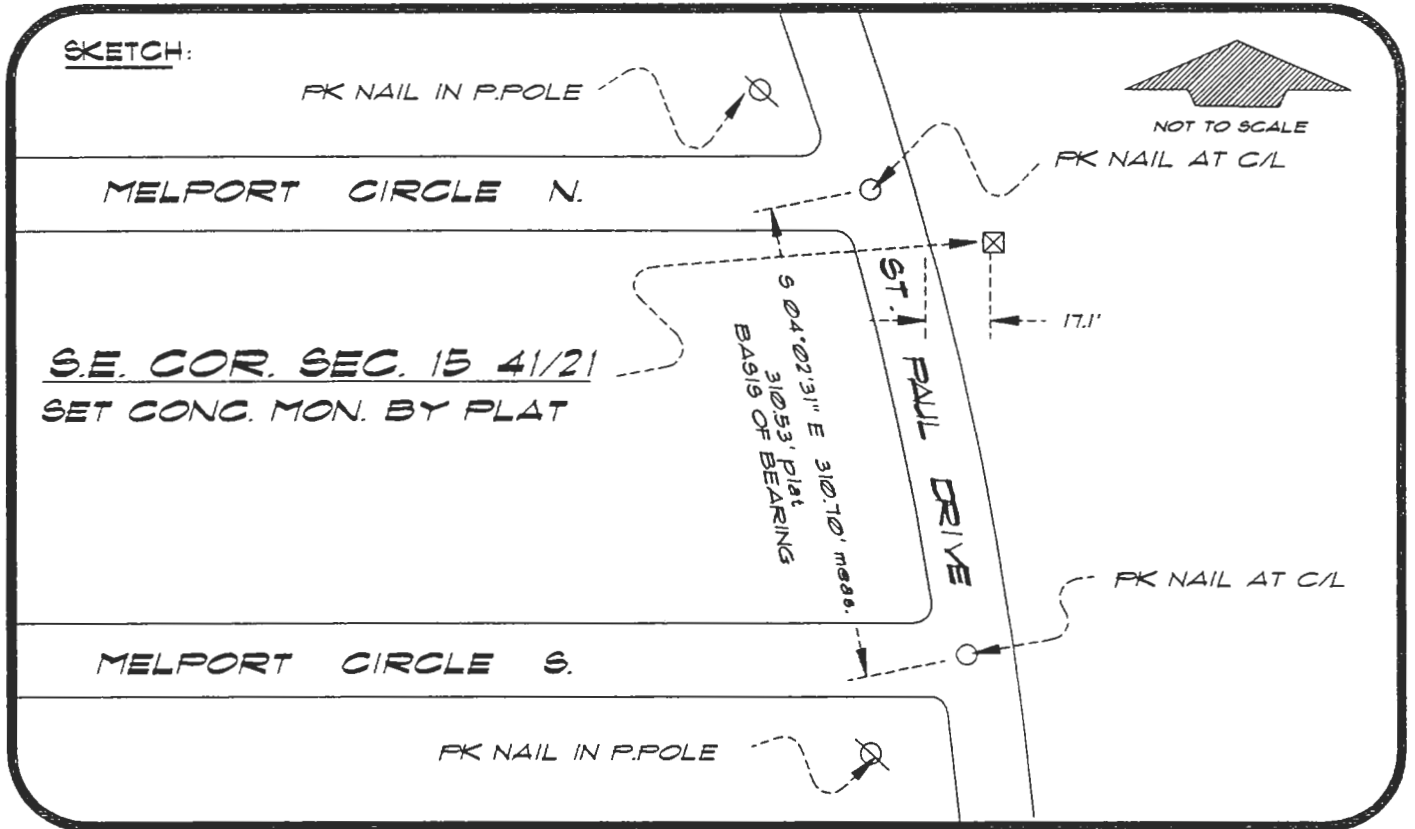
or Minimum Technical Standards (Chapter 6IG17, F.A.C.) ratio of closure for field data (example 1:10,000), _____ . This does not specify an order of accuracy.

Control point(s) used for survey: *CHARLOTTE COUNTY HORIZONTAL CONTROL NETWORK INCLUDES HAVOLINE 2, FLACIDA 2, W260, PUNTPORT, 4 FLGPS 58 AS B ORDER STATIONS.*

Comments:

412IN17

DOC. #



S.E. COR. SEC. 15 41/21
 SET CONC. MON. BY PLAT

BASIS OF BEARING CHORD CALC. FROM PLAT
 REFER: FB 274/12

REFERENCE MEASUREMENTS

Description	Bearing	Distance
FK NAIL IN P. POLE	S 10°44'48" W	305.05'
FK NAIL IN P. POLE	N 50°31'47" W	102.59'
FK NAIL AT C/L	S 02°17'41" W	271.85'
FK NAIL AT C/L	N 40°34'07" W	50.41'

SURVEYORS CERTIFICATE: I certify the monument and accessories indicated above were field located on NOVEMBER 1, 1991

R. P. Ross

SIGNATURE

PLS 4260

7-19-94

DATE

CHARLOTTE COUNTY SURVEY DEPT.

FIRM OR AGENCY

7000 FLORIDA STREET

ADDRESS

PUNTA GORDA, FLORIDA 33950

CITY

STATE

REGISTERED

JUL 22 1994

SURVEY & MAPPING



SEND TO:

Department of Environmental Protection
 Bureau of Survey and Mapping
 3900 Commonwealth Boulevard
 Mail Station 105
 Tallahassee, Florida 32399

510

Completeness checked by: B. Linton
 Accepted and filed: 8-1-94 Date
 BLM. - I.D. 22151423 DEP. USE ONLY