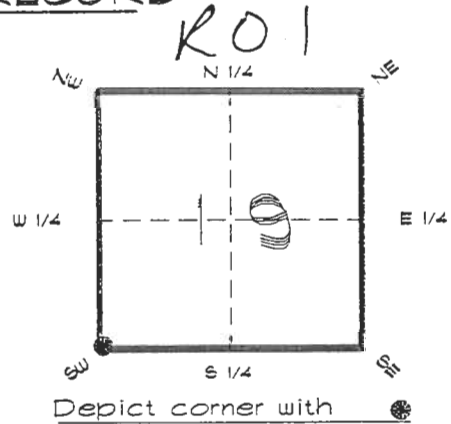


4121R01

FLORIDA DEPARTMENT OF ENVIRONMENTAL PROTECTION
CERTIFIED CORNER RECORD

CORNER DESCRIPTION:

S. W. corner of Section 19 ,
Twp 41 S. , Rge 21 E. ,
Tallahassee Base Meridian,
CHARLOTTE County(s), Florida.



MONUMENTATION DESCRIPTION:

Describe original monument and accessories, or subsequent restoration. Give sources of information. (If no attempt was made to search for the original monument and accessories, this information is not necessary.)

Description of corner evidence found:

SANDSTONE MONUMENT, REPLACED WITH CONCRETE MONUMENT

State method(s) to determine corner location (lost corners only):

HORIZONTAL POSITION INFORMATION (if determined):

Latitude 26°53'10.86437" N Longitude 82°15'21.32617" W

Y(Northing) 282837.888 m X(Easting) 174574.257 m Zone FLW.

Convergence -0°06'56.646" Scale factor 0.99994915

Coordinate determination (circle one): Field traverse GPS

Horizontal datum (circle one): NAD27 NAD83(1986) NAD83(1990) other (explain)

Order of accuracy as defined in "Standards and Specifications for Geodetic Control Networks" published by the Federal Geodetic Control Committee (circle one):
1st, 2nd, 3rd, class _____ ,

or Minimum Technical Standards (Chapter 21HH-6, F.A.C.) ratio of closure for field data (example 1:10,000), _____ . This does not specify an order of accuracy.

Control point(s) used for survey: CHARLOTTE COUNTY HORIZONTAL CONTROL NETWORK
INCLUDES HAYOLINE 2, PLACIDA 2, W260, PUNTPORT, & FLGPS 58 A5 B ORDER STATIONS.

Comments:

RECEIVED

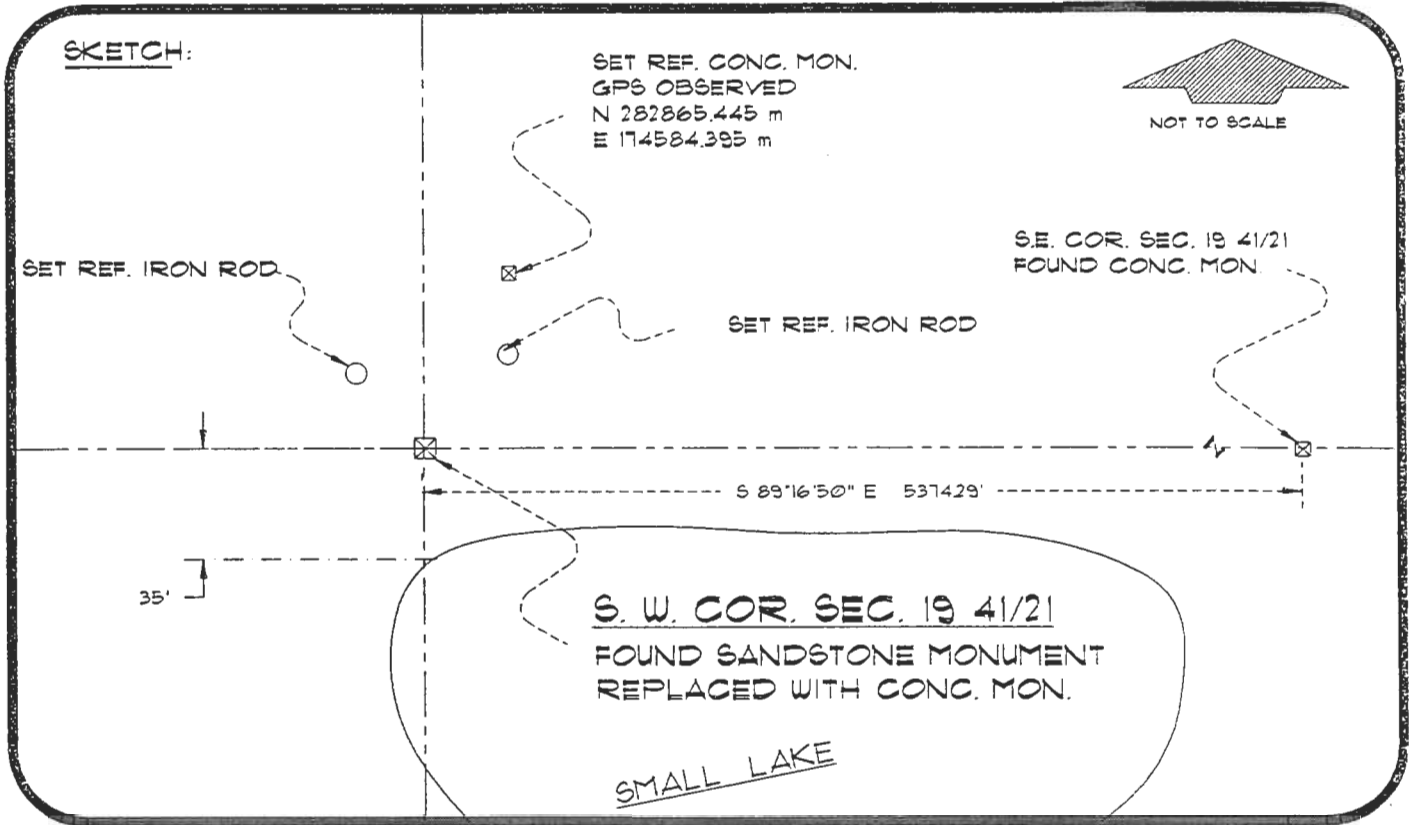
OCT 25 1994

SURVEY & MAPPING

0049893

4121R01

DOC. #



BASIS OF BEARING SOLAR OBSERVATION REFER: FB 274/36
SET SURVEY MARKER POST 3.0' S'LY

REFERENCE MEASUREMENTS

Description	Bearing	Distance
SET REF. IRON ROD	N 37°23'26" E	53.01'
SET REF. IRON ROD	N 35°51'51" W	42.98'
SET REF. CONC. MON.	N 20°04'56" E	96.34'

SURVEYORS CERTIFICATE: I certify the monument and accessories indicated above were field located on SEPTEMBER 21, 1994

R. Rose PLS 4260
SIGNATURE

October 18, 1994
DATE

CHARLOTTE COUNTY SURVEY DEPT.
FIRM OR AGENCY

1000 FLORIDA STREET
ADDRESS

PUNTA GORDA, FLA. 33950
CITY STATE

511



Completeness checked by: B. Linton
Accepted and filed: 11-1-94
BLM. - I.D. 25241930 Date
DNR USE ONLY

SEND TO:
Department of Environmental Protection
Bureau of Survey and Mapping
3900 Commonwealth Boulevard
Mail Station 105
Tallahassee, Florida 32399