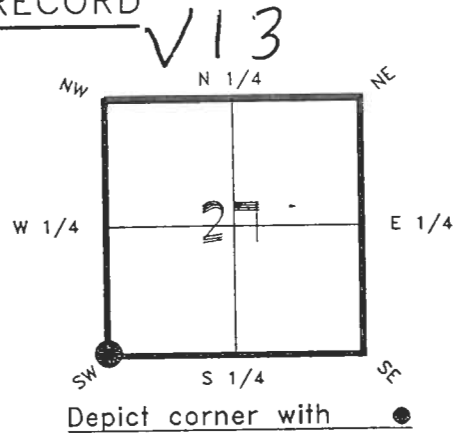


4121V13

FLORIDA DEPARTMENT OF NATURAL RESOURCES
CERTIFIED CORNER RECORD

CORNER DESCRIPTION:

SW. corner of Section 27 ,
Twp 41 S. , Rge 21 E. ,
Tallahassee Base Meridian,
CHARLOTTE County(s), Florida.



MONUMENTATION DESCRIPTION:

Describe original monument and accessories, or subsequent restoration. Give sources of information. (If no attempt was made to search for the original monument and accessories, this information is not necessary.)

NONE

Description of corner evidence found:

CONCRETE MONUMENT (BROKEN) REPLACED WITH CHARLOTTE COUNTY SURVEY DEPARTMENT CONCRETE MONUMENT

State method(s) to determine corner location (lost corners only):

HORIZONTAL POSITION INFORMATION (if determined):

Latitude 26°52'16.77330"N Longitude 82°12'24.93774"W
Y(Northing) 281164260(M) X(Easting) 179439326(M) Zone FL W
Convergence -0°05'36.704" Scale factor 0.99994639

Coordinate determination (circle one): Field traverse GPS

Horizontal datum (circle one): NAD27 NAD83(1986) NAD83(1990) other (explain)

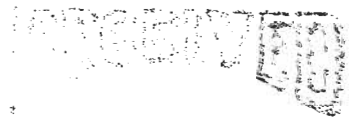
Order of accuracy as defined in "Standards and Specifications for Geodetic Control Networks" published by the Federal Geodetic Control Committee (circle one):
1st, 2nd, 3rd, class 1 ,

or Minimum Technical Standards (Chapter 21HH-6, F.A.C.) ratio of closure for field data (example 1:10,000), _____ . This does not specify an order of accuracy.

Control point(s) used for survey:

Comments:

CORRECTION TO STATE PLANE COORDINATES.



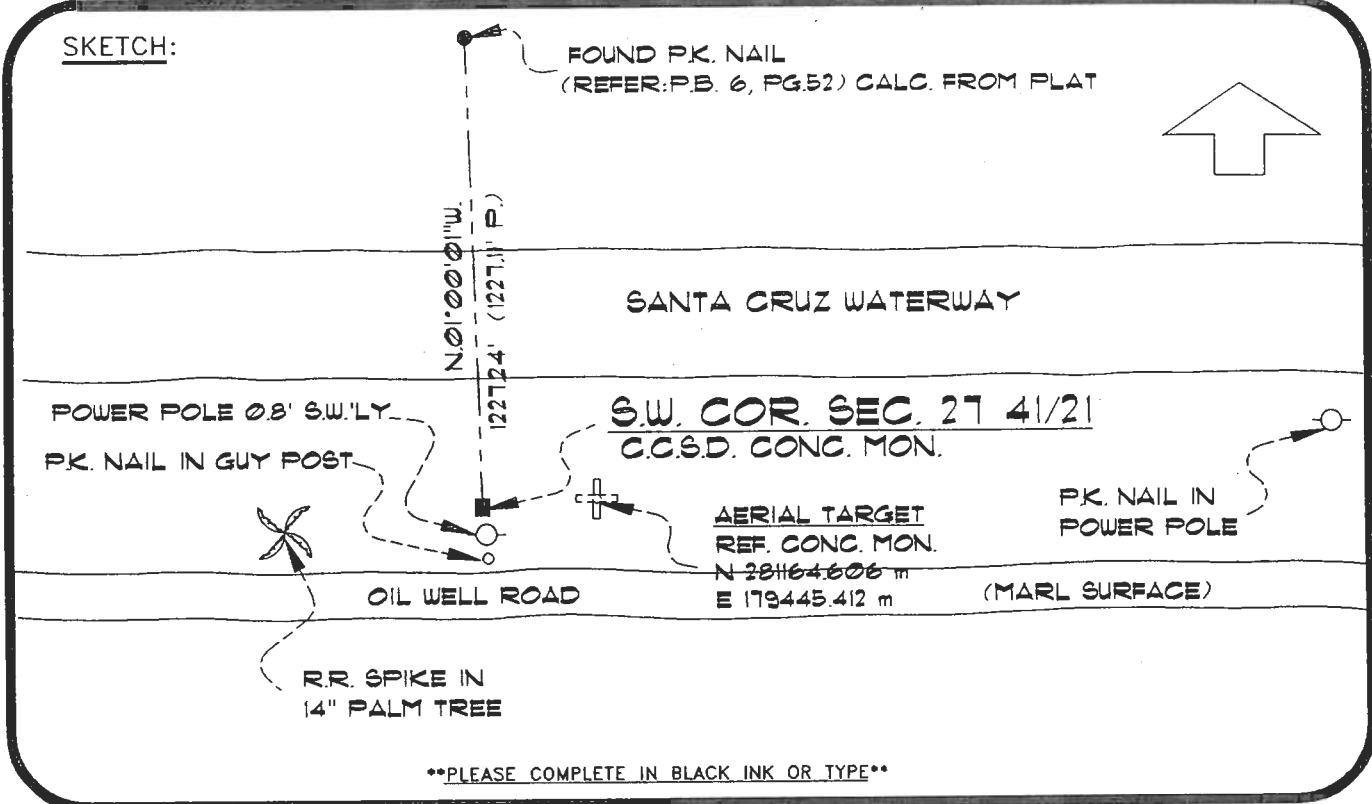
DEC 27 1994

SURVEY & MAPPING

0050494

4121V13

DOC. #



BASIS OF BEARING-SOUTH LINE SEC. 29 41/21 (S 89°22'43"E.) REFER: P.B. 10, PG. 5
 All bearings and distances must be from the corner to the witness. Indicate whether corner was found, set, or replaced and show north arrow. REFER: F.B. 274-15
 SET SURVEY MARKER POST 1.8' N.'LY

REFERENCE MEASUREMENTS (at least three vicinity references must be given below even if they appear on the above sketch):

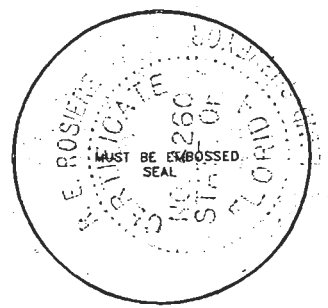
Description	Bearing	Distance
R.R. SPIKE IN 14" PALM TREE	S 85°06'14"W.	79.05'
P.K. NAIL IN GUY POST	S 04°41'21"E.	17.11'
P.K. NAIL IN POWER POLE	N 85°13'29"E.	437.44'

(BASIS OF BEARING SOLAR OBSERVATION)
 REF. CONC. MON. N 86°39'22" E 20.00'

SURVEYORS CERTIFICATE: I certify the monument and accessories indicated above were field located on December 15, 19 94.

[Signature] PLS 4260
 SIGNATURE
December 20, 1994
 DATE
 CHARLOTTE COUNTY SURVEY DEPT.
 FIRM OR AGENCY
 7000 FLORIDA STREET
 ADDRESS
 PUNTA GORDA, FLA. 33950
 CITY STATE

474



Completeness checked by: *[Signature]*
 Accepted and filed: *[Signature]*
 B.L.M. - I.D. 33282734 D.N.R. USE ONLY

SEND TO:
 Department of Natural Resources
 Bureau of Survey and Mapping
 3900 Commonwealth Boulevard
 Mail Station 105
 Tallahassee, Florida 32399
 DNR 53-001(16)
 REV. 7/16/92
 PAGE 2 OF 2