

4121V17

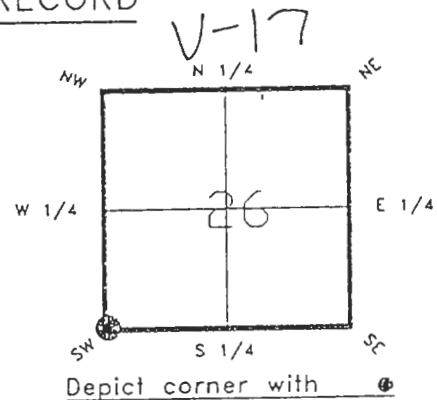
DOC. #

~~0046022~~

FLORIDA DEPARTMENT OF NATURAL RESOURCES
CERTIFIED CORNER RECORD

CORNER DESCRIPTION:

S.W. corner of Section 26 ,
Twp 41 S. , Rge 21 E. ,
Tallahassee Base Meridian,
CHARLOTTE County(s), Florida.



MONUMENTATION DESCRIPTION:

Describe original monument and accessories, or subsequent restoration. Give sources of information. (If no attempt was made to search for the original monument and accessories, this information is not necessary.)

NONE FOUND

Description of corner evidence found:
CONCRETE MONUMENT ON SURFACE

RECEIVED

JUL 26 1993

State method(s) to determine corner location (lost corners only): SURVEY & MAPPING

HORIZONTAL POSITION INFORMATION (if determined):

Latitude 26°52'19.90364"N Longitude 82°11'26.96503"W
Y(Northing) 281258.091(M) X(Easting) 181039.552(M) Zone FL W
Convergence -0°05'10.510" Scale factor 0.99994561

Coordinate determination (circle one): Field traverse GPS

Horizontal datum (circle one): NAD27 NAD83(1986) NAD83(1990) other (explain)

Order of accuracy as defined in "Standards and Specifications for Geodetic Control Networks" published by the Federal Geodetic Control Committee (circle one):
1st, 2nd, 3rd, class 1 ,

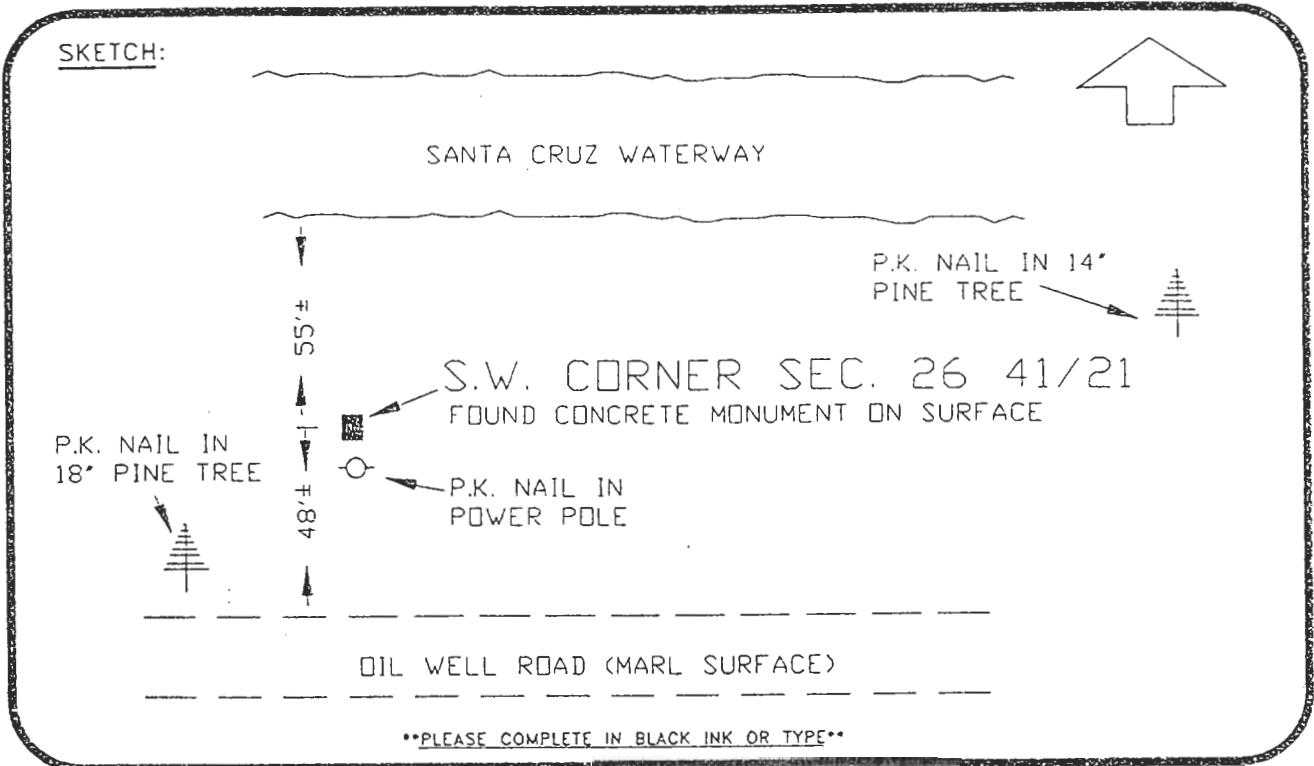
or Minimum Technical Standards (Chapter 21HH-6, F.A.C.) ratio of closure for field data (example 1:10,000), _____ . This does not specify an order of accuracy.

Control point(s) used for survey:

Comments:

PLEASE SEND ORIGINAL ONLY
PLEASE COMPLETE IN BLACK INK OR TYPE

DNR 53-001(16)
REV: 7/16/92
PAGE 1 OF 2



PLEASE COMPLETE IN BLACK INK OR TYPE

BASIS OF BEARING-SOUTH LINE SEC. 29 41/21(S.89°5D22'43"E.) REFER: P.B. 10,PG.5

All bearings and distances must be from the corner to the witness. Indicate whether corner was found, set, or replaced and show north arrow. REFER: F.B. 274-18
SET SURVEY MARKER POST 1.7' N'LY

REFERENCE MEASUREMENTS (at least three vicinity references must be given below even if they appear on the above sketch):

Description	Bearing	Distance
P.K. NAIL IN POWER POLE	S.27°53'25"E.	1.14'
P.K. NAIL IN 14" PINE TREE	N.83°36'54"E.	208.00'
P.K. NAIL IN 18" PINE TREE	S.45°54'30"W.	58.46'

SURVEYORS CERTIFICATE: I certify the monument and accessories indicated above were field located on NOVEMBER 20, 19 91.

[Signature] PLS 4260
SIGNATURE

July 12, 1993
DATE

CHARLOTTE COUNTY SURVEY DEPT.
FIRM OR AGENCY
7000 FLORIDA STREET
ADDRESS
PUNTA GORDA, FLA. 33950
CITY STATE



Completeness checked by: G. Green
Accepted and filed: 8-93
B.L.M. - I.D. 34272635 Date
D.N.P. USE ONLY

SEND TO:
Department of Natural Resources
Bureau of Survey and Mapping
3900 Commonwealth Boulevard
Mail Station 105
Tallahassee, Florida 32399
DNR 53-001(16)
REV. 7/16/92
PAGE 2 OF 2