

4121Z21

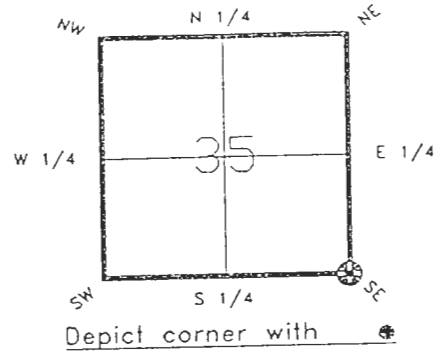
DOC. #  0046027

FLORIDA DEPARTMENT OF NATURAL RESOURCES  
CERTIFIED CORNER RECORD

Z-21

CORNER DESCRIPTION:

S.E. corner of Section 35 ,  
Twp 41 S. , Rge 21 E. ,  
Tallahassee Base Meridian,  
CHARLOTTE County(s), Florida.



MONUMENTATION DESCRIPTION:

Describe original monument and accessories, or subsequent restoration. Give sources of information. (If no attempt was made to search for the original monument and accessories, this information is not necessary.)

NONE FOUND

**RECEIVED**

JUL 26 1993

Description of corner evidence found:

CONCRETE MONUMENT WITH TOP BROKEN

**SURVEY & MAPPING**

State method(s) to determine corner location (lost corners only):

HORIZONTAL POSITION INFORMATION ( if determined ):

Latitude 26°51'27.31993"N Longitude 82°10'29.54373"W  
Y(Northing) 279637.465(M) X(Easting) 182622.169 Zone FL W  
Convergence -0°04'44.412" Scale factor 0.99994490

Coordinate determination (circle one): Field traverse  GPS

Horizontal datum (circle one): NAD27  NAD83(1986)  NAD83(1990)  other (explain)

Order of accuracy as defined in "Standards and Specifications for Geodetic Control Networks" published by the Federal Geodetic Control Committee (circle one):  
1st,  2nd,  3rd, class 1

or Minimum Technical Standards (Chapter 21HH-6, F.A.C.) ratio of closure for field data (example 1:10,000), \_\_\_\_\_ . This does not specify an order of accuracy.

Control point(s) used for survey:

Comments:

\*\*PLEASE SEND ORIGINAL ONLY\*\*

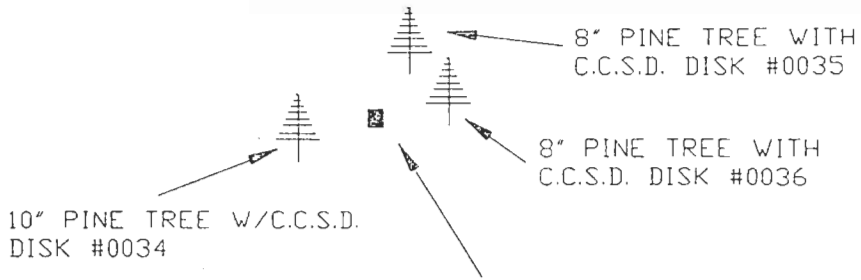
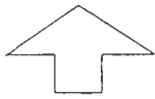
\*\*PLEASE COMPLETE IN BLACK INK OR TYPE\*\*

DNR 53-001(16)  
REV: 7/16/92  
PAGE 1 OF 2

0046027

DOC. #

SKETCH:



S.E. CORNER SEC. 35 41/21  
FOUND 4" X 4" CONCRETE MONUMENT TOP BROKEN

FOUND CONCRETE MONUMENT 4" DIA.

\*\*PLEASE COMPLETE IN BLACK INK OR TYPE\*\*

REFER: ROTONDA SPRINGS SUBD., PLAT BOOK 12, PG. 5 REFER: F.B. 274-29

All bearings and distances must be from the corner to the witness. Indicate whether corner was found, set, or replaced and show north arrow.

BASIS OF BEARING-SOLAR OBSERVATION SET SURVEY MARKER POST 2.0' N.L.Y  
REFERENCE MEASUREMENTS ( at least three vicinity references must be given below even if they appear on the above sketch ):

Description	Bearing	Distance
10" PINE W/C.C.S.D. DISK #0034	S.64°27'50"W.	31.34'
8" PINE W/C.C.S.D. DISK #0035	N.37°20'47"E.	20.56'
8" PINE W/C.C.S.D. DISK #0036	S.88°30'15"E.	26.41'
FOUND CONCRETE MONUMENT 4" DIA.	S.01°24'35"E.	190' (190.09' PLAT)

SURVEYORS CERTIFICATE: I certify the monument and accessories indicated above were field located on JANUARY 31, 19 92.

*[Signature]* PLS 4260

July 12, 1993  
DATE

CHARLOTTE COUNTY SURVEY DEPT.

7000 FLORIDA STREET

PUNTA GORDA, FLA. 33950

CITY STATE



SEND TO:

Department of Natural Resources  
Bureau of Survey and Mapping  
3900 Commonwealth Boulevard  
Mail Station 105  
Tallahassee, Florida 32399

DNR 53-001(16)  
REV. 7/16/92  
PAGE 2 OF 2

Completeness checked by: GR Green  
 Accepted and filed: 8-93  
 Date  
 B.L.M. - I.D. 02353601 D.N.R. USE ONLY