

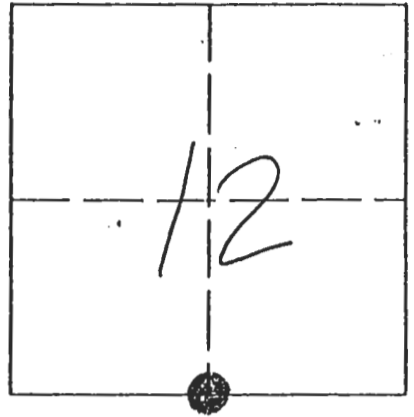
FLORIDA DEPARTMENT OF NATURAL RESOURCES

CERTIFIED CORNER RECORD

J23

CORNER DESCRIPTION:

SOUTH 1/4 corner of Section(s) 12  
Township 41 SOUTH, Range 22 EAST;  
Tallahassee Base and Meridian: CHARLOTTE  
County(s), Florida.



● CORNER MONUMENT

Description of original monument and accessories and subsequent restoration. Give sources of information.

SET POST FOR 1/4 SEC. COR. FROM WHICH:  
A PINE 12 INS. DIAM. BEARS N 57° W 31 LINKS  
A PINE 12 INS. DIAM. BEARS S 60° E 75 LINKS  
UNITED STATES SURVEY BY S. HAMBLIN, 1872

MONUMENT DESCRIPTION:

Description of corner evidence found:

NONE

Description of corner evidence set:

IN HOUSE, UNABLE TO SET, PLACED REFERENCES ONLY



Florida State Plane Coordinates of Corner (if determined):

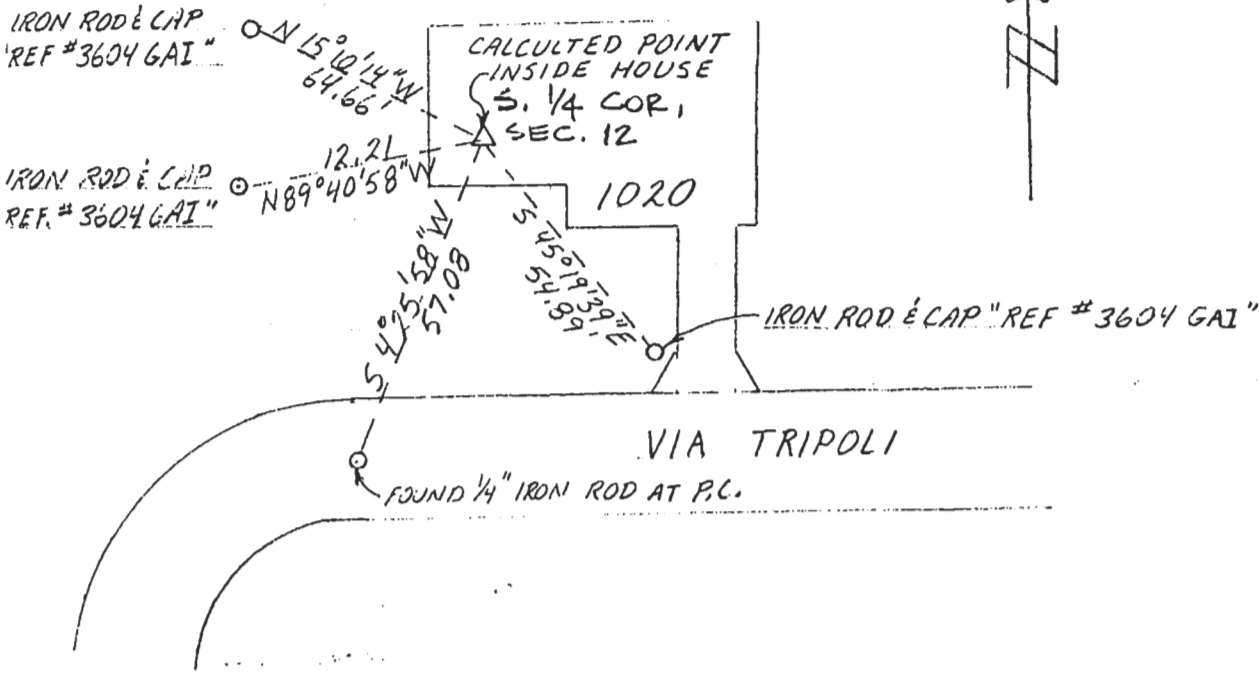
x: \_\_\_\_\_ y: \_\_\_\_\_ Zone: \_\_\_\_\_

Basis for coordinates:

Transverse Mercator:

RECEIVED  
AUG 11 1995

SKETCH



REFERENCE MEASUREMENTS (at least three):

Description	Distance		Bearing (Give Basis)
	feet	metres	
IRON ROD & CAP	12.21'		N 89° 40' 58" W
IRON ROD & CAP	64.66'		N 15° 10' 14" W
IRON ROD & CAP	54.89'		S 45° 19' 39" E
1/4" IRON ROD	57.08'		S 4° 25' 58" W

STATEMENT OF METHOD TO DETERMINE CORNER LOCATION (lost corners only).

SINGLE PROPORTIONATE MEASURE BETWEEN THE SW COR. OF SEC. 12 AND THE SE COR. OF SEC. 12

SURVEYORS CERTIFICATE: This is to certify that the monument and accessories indicated above are correctly described and shown as they were on 7-8-94 to the best of my knowledge and ability.

*[Signature]*  
 Signature  
 GAI Consultants Southeast, Inc.  
 Firm or Agency  
 201 East Pine Street Suite 200  
 Address  
 Orlando, Florida 32801

#4640, Florida  
 Registration No.  
8-09-95  
 Date

Checked by: *[Signature]*  
 Accepted and Filed: 9-1-95  
 Date: 13CLO012

509  
 State Cadastral Surveyor