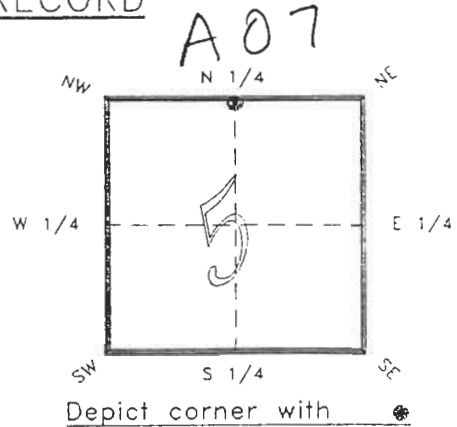


4123A07

FLORIDA DEPARTMENT OF ENVIRONMENTAL PROTECTION
CERTIFIED CORNER RECORD

CORNER DESCRIPTION:

N.E. COR. GOVT. LOT 3 SEC. 5
Twp 41 S. , Rge 23 E. ,
Tallahassee Base Meridian,
CHARLOTTE County(s), Florida.



MONUMENTATION DESCRIPTION:

Describe original monument and accessories, or subsequent restoration. Give sources of information. (If no attempt was made to search for the original monument and accessories, this information is not necessary.)

Description of corner evidence found:
4"x4" CONCRETE MONUMENT "PRM" LS 1850
WINNINGHAM & LIVELY

State method(s) to determine corner location (lost corners only):

HORIZONTAL POSITION INFORMATION (if determined):

Latitude 26°56'51.04845" N Longitude 82°01'51.90819 W
Y(Northing) 289589.101 m X(Easting) 196913.352 m Zone FLW
Convergence -0°00'50.714" Scale factor 0.99994129

Coordinate determination (circle one): Field traverse GPS

Horizontal datum (circle one): NAD27 NAD83(1986) NAD83(1990) other (explain)

Order of accuracy as defined in "Standards and Specifications for Geodetic Control Networks" published by the Federal Geodetic Control Committee (circle one):
1st, 2nd, 3rd, class 1 ,

or Minimum Technical Standards (Chapter 21HH-6, F.A.C.) ratio of closure for field data (example 1:10,000), _____ . This does not specify an order of accuracy.

Control point(s) used for survey: CHARLOTTE COUNTY HORIZONTAL CONTROL NETWORK INCLUDES HAVOLINE 2, PLACIDA 2, W260, PUNTAPOINT, & FLGPS 58 AS B ORDER STATIONS.

Comments:

REFER: EMERALD POINT VILLAS CONDOMINUM
CB 3 PAGE 10 C.C.P.R.

RECEIVED

FEB 20 1995

050973

4123A07

DOC. #

SKETCH:

N.E. COR. GOVT. LOT 3
SEC. 5 41/23

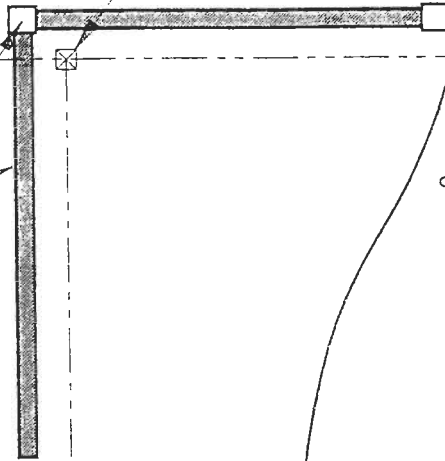
FOUND 4'x4' CONC. MON.

EMERALD
POINT
VILLAS



PHOTO I.D. POINT
N 289589.394 m
E 196913.047 m

4' CB WALL



BASIS OF BEARING SOLAR OBSERVATION

REFER FB 251/50

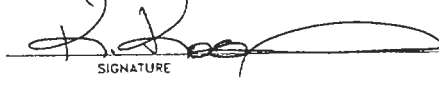
SET SURVEY MARKER POST E'LY 1.0'

REFERENCE MEASUREMENTS

| Description | Bearing | Distance |
|--------------------------|---------------|----------|
| PK NAIL IN ASPHALT DRIVE | S 60°59'30" E | 35.16' |
| PK NAIL IN ASPHALT DRIVE | S 55°53'11" E | 29.56' |
| FACE CONC. BLOCK WALL | N'LY | 0.62' |
| FACE CONC. BLOCK WALL | W'LY | 0.68' |

SURVEYORS CERTIFICATE: I certify the monument and accessories indicated above were field located on APRIL 15, 19 91.

UPDATED 1/30/95

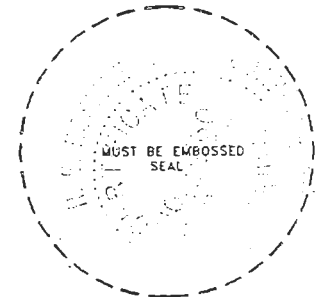
 PLS 4260
SIGNATURE

2-15-95
DATE

CHARLOTTE COUNTY SURVEY DEPT.
FIRM OR AGENCY

7000 FLORIDA STREET
ADDRESS

PUNTA GORDA, FLA. 33950
CITY STATE



509

Completeness checked by: B. Linton
 Accepted and filed: 3-1-95 Date
 B.L.M. - I.D. 05CLON00 D.N.R. USE ONLY

SEND TO:
Department of Environmental Protection
Bureau of Survey and Mapping
3900 Commonwealth Boulevard
Mail Station 105
Tallahassee, Florida 32399