

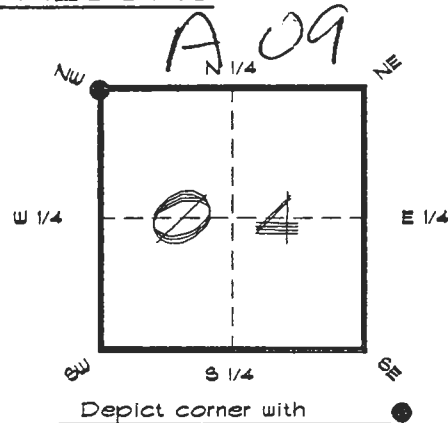
4123A09

DOC. # **0049174**

FLORIDA DEPARTMENT OF ENVIRONMENTAL PROTECTION
CERTIFIED CORNER RECORD

CORNER DESCRIPTION:

N. W. corner of Section 4 ,
Twp 41 S. , Rge 23 E. ,
Tallahassee Base Meridian,
CHARLOTTE County(s), Florida.



MONUMENTATION DESCRIPTION:

Describe original monument and accessories, or subsequent restoration. Give sources of information. (If no attempt was made to search for the original monument and accessories, this information is not necessary.)

Description of corner evidence found:

CONCRETE MONUMENT 2' ABOVE GRADE AT S. E. CORNER OF CLEARED LAWN AREA

State method(s) to determine corner location (lost corners only):

HORIZONTAL POSITION INFORMATION (if determined):

Latitude 26°56'50.50706" N Longitude 82°01'22.32287" W

Y(Northing) 289572.265 m X(Easting) 197729.370 m Zone FLW

Convergence -0°00'37.306 Scale factor 0.99994124

Coordinate determination (circle one): Field traverse GPS

Horizontal datum (circle one): NAD27 NAD83(1986) NAD83(1990) other (explain)

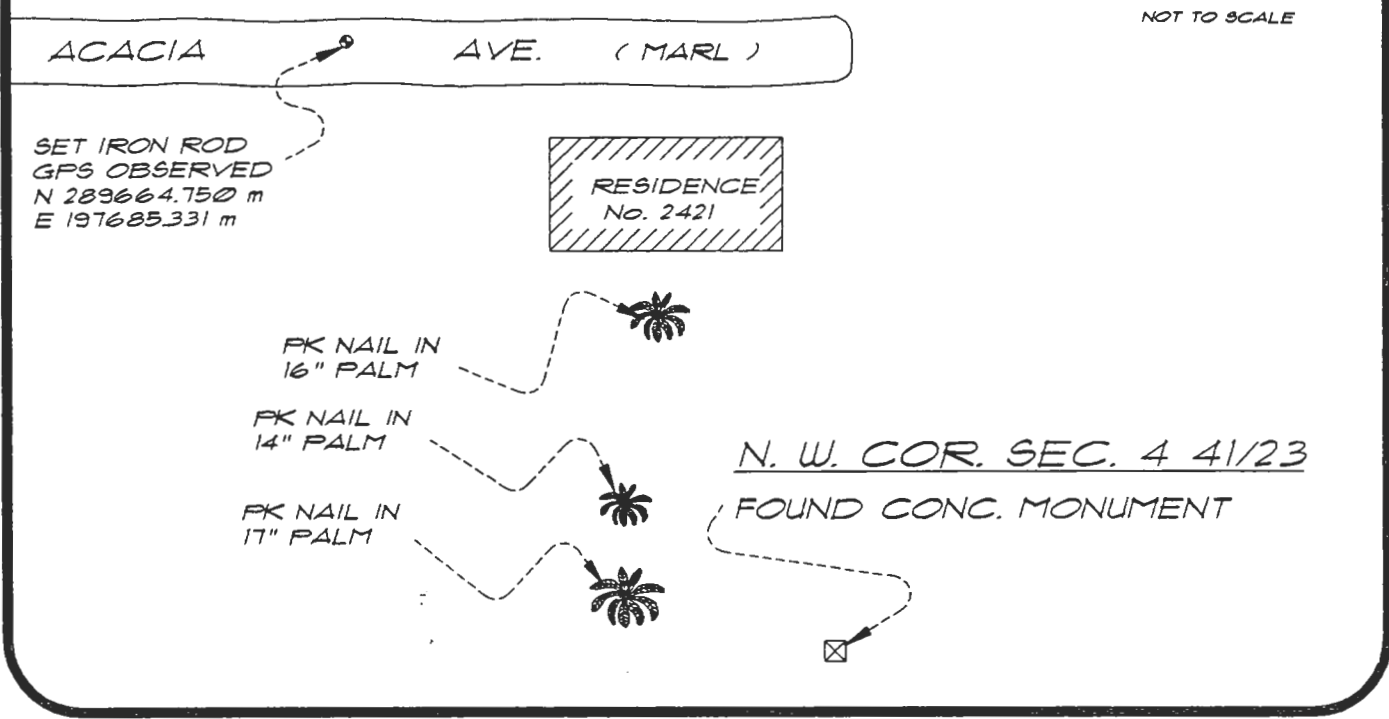
Order of accuracy as defined in Standards and Specifications for Geodetic Control Networks, published by the Federal Geodetic Control Committee (circle one):
1st, 2nd, (3rd) class

or Minimum Technical Standards (Chapter 6IG17, F.A.C.) ratio of closure for field data (example 1:10,000), _____ . This does not specify an order of accuracy.

Control point(s) used for survey: *CHARLOTTE COUNTY HORIZONTAL CONTROL NETWORK INCLUDES HAYOLINE 2, FLACIDA 2, W260, PUNTPORT, & FLGPS 58 AS B ORDER STATIONS.*

Comments:

SKETCH:



BASIS OF BEARING SOLAR OBSERVATION REFER: FB 251/66
 SET SURVEY MARKER POST 1.8' E'LY

REFERENCE MEASUREMENTS

Description	Bearing	Distance
S. W. COR. RESIDENCE	N 24°06'53" W	238.01'
FK NAIL IN 16" PALM	N 17°47'51" W	199.14'
FK NAIL IN 14" PALM	N 41°44'13" W	116.66'
FK NAIL IN 17" PALM	N 60°49'28" W	98.83'
SET REF. IRON ROD	N 25°28'23" W	336.05'
	(N 25°27'45" W GRID)	

SURVEYORS CERTIFICATE: I certify the monument and accessories indicated above were field located on DECEMBER 18, 1991

R. Rose PLS 4260
 SIGNATURE
7-19-94
 DATE
CHARLOTTE COUNTY SURVEY DEPT.
 FIRM OR AGENCY
7000 FLORIDA STREET
 ADDRESS
PUNTA GORDA, FLORIDA 33950
 CITY STATE

RECEIVED

JUL 22 1991

SURVEY & MAPPING



Completeness checked by: B. Smith
 Accepted and filed: 8-1-94 Date
 BLM. - ID. 05000004 D.E.P. USE ONLY

SEND TO:
 Department of Environmental Protection
 Bureau of Survey and Mapping
 3900 Commonwealth Boulevard
 Mall Station 105
 Tallahassee, Florida 32399

509