

4123419

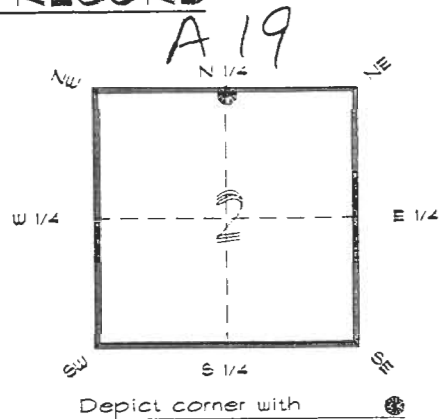
DOC. #

050965

**FLORIDA DEPARTMENT OF ENVIRONMENTAL PROTECTION**  
**CERTIFIED CORNER RECORD**

CORNER DESCRIPTION:

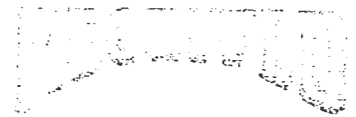
N. 1/4 corner of Section 2  
Twp 41 S., Rge 23 E.  
Tallahassee Base Meridian,  
CHARLOTTE County(s), Florida.



MONUMENTATION DESCRIPTION:

Describe original monument and accessories, or subsequent restoration. Give sources of information. (If no attempt was made to search for the original monument and accessories, this information is not necessary.)

Description of corner evidence found:  
80d NAIL ON SURFACE ( BENT )



JAN 31 1995

State method(s) to determine corner location (lost corners only):

**SURVEY & MAPPING**

HORIZONTAL POSITION INFORMATION ( if determined ):

Latitude 26°56'49.55226" N Longitude 81°58'54.95061" W  
Y(Northing) 289542.802 m X(Easting) 201794.197 m Zone FLW  
Convergence 0°00'29.478" Scale factor 0.99994122

Coordinate determination (circle one): Field traverse GPS

Horizontal datum (circle one): NAD27 NAD83(1986) NAD83(1990) other (explain)

Order of accuracy as defined in Standards and Specifications for Geodetic Control Networks published by the Federal Geodetic Control Committee (circle one):  
1st, 2nd, 3rd, class 1

or Minimum Technical Standards (Chapter 61G17, F.A.C.) ratio of closure for field data (example 1:10,000), \_\_\_\_\_ . This does not specify an order of accuracy.

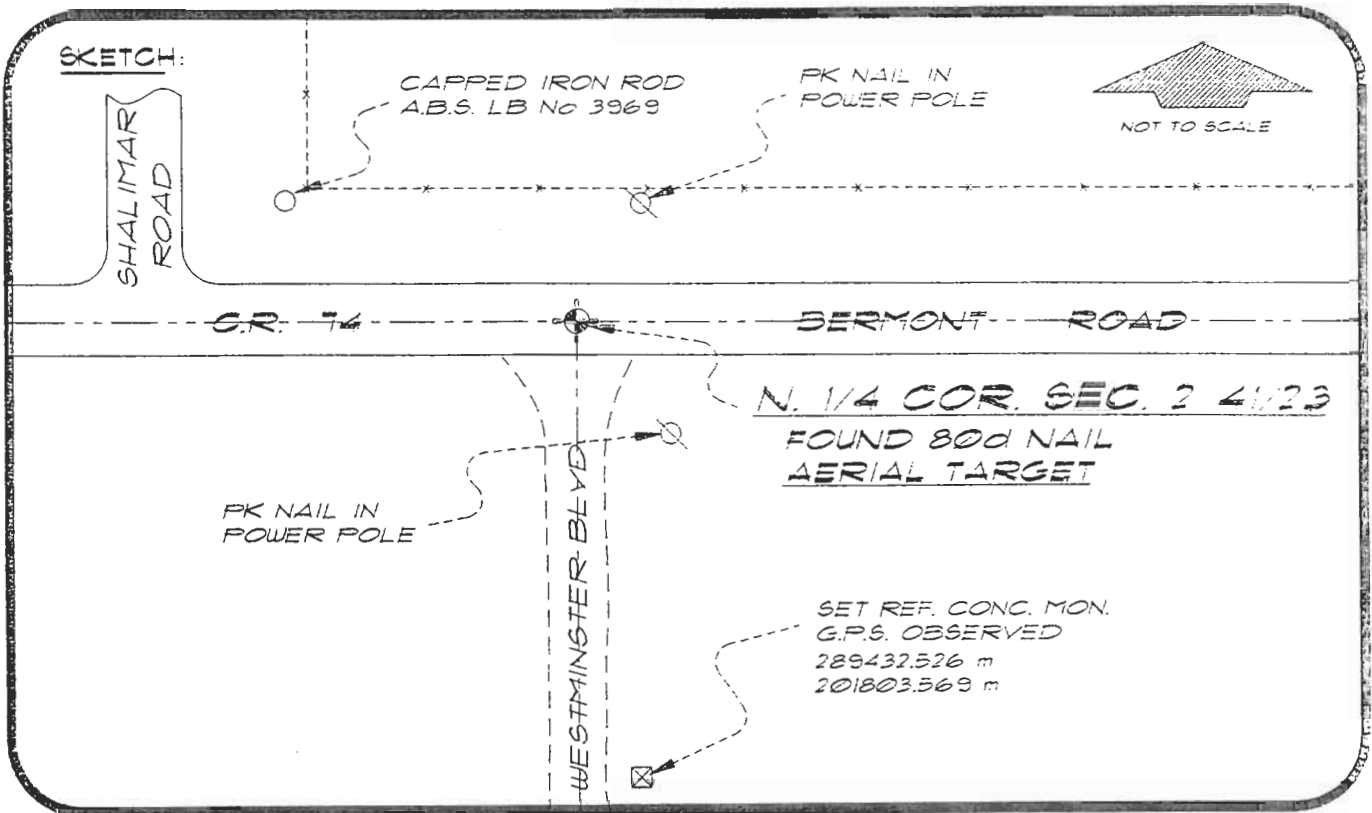
Control point(s) used for survey: CHARLOTTE COUNTY HORIZONTAL CONTROL NETWORK INCLUDES HAYOLINE 2, PLACIDA 2, W260, PUNTPORT, & FLGPS 58 AS B ORDER STATIONS.

Comments:

4123A19

DOC. #

050965



BASIS OF BEARING SOLAR OBSERVATION REFER: FB 251/37

**REFERENCE MEASUREMENTS**

Description	Bearing	Distance
PK NAIL IN TELE POLE	S 22°02'32" E	49.26'
PK NAIL IN POWER POLE	N 18°44'51" E	51.08'
C. IRON ROD LB No 3969	N 62°14'13" W	109.35'
SET REF. CONC. MON.	S 04°50'59" E	362.97'
	( S 04°51'28" E GRID )	

**SURVEYORS CERTIFICATE:** I certify the monument and accessories indicated above were field located on MARCH 21, 1994

*R. Rose*  
SIGNATURE

PLS 4260

UPDATED 1/25/95

1/30/95  
DATE

CHARLOTTE COUNTY SURVEY DEPT.  
FIRM OR AGENCY

7000 FLORIDA STREET  
ADDRESS

PUNTA GORDA, FLORIDA 33950  
CITY STATE

508



Completeness checked by: *B. J. Juntor*  
 Accepted and filed: 3-1-95  
 BLM. - I.D. 02CL0035 DEP. USE ONLY

SEND TO:

Department of Environmental Protection  
Bureau of Survey and Mapping  
3900 Commonwealth Boulevard  
Mail Station 105  
Tallahassee, Florida 32399

02CLN000