

DOC. #

**062848**

4123A21

FLORIDA DEPARTMENT OF ENVIRONMENTAL PROTECTION  
CERTIFIED CORNER RECORD

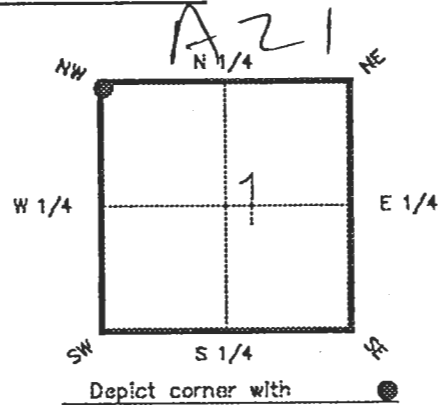
CORNER DESCRIPTION:

N. W. corner of Section 1,

Twp 41 S., Rge 23 E.

Tallahassee Base Meridian,

CHARLOTTE County(s), Florida.



MONUMENTATION DESCRIPTION:

Describe original monument and accessories, or subsequent restoration. Give sources of information. (If no attempt was made to search for the original monument and accessories, this information is not necessary.)

Description of corner evidence found:

*IRON ROD*

State method(s) to determine corner location (lost corners only):

HORIZONTAL POSITION INFORMATION ( if determined ):

Latitude 26°56'49.32326" N Longitude 81°58'25.42126" W

Y(Northing) 289535.897 m X(Easting) 202608.679 m Zone FLW

Convergence 0°00'42.860" Scale factor 0.99994126

Coordinate determination (circle one): Field traverse GPS

Horizontal datum (circle one): NAD27 NAD83(1986) NAD83(1990) other (explain)

Order of accuracy as defined in Standards and Specifications for Geodetic Control Networks published by the Federal Geodetic Control Committee (circle one):

1st, 2nd, 3rd, class 1

or Minimum Technical Standards (Chapter 61G17, F.A.C.) ratio of closure for field data (example 1:10,000), \_\_\_\_\_ . This does not specify an order of accuracy.

Control point(s) used for survey: *CHARLOTTE COUNTY HORIZONTAL CONTROL NETWORK INCLUDES HAVOLINE 2, PLACIDA 2, W260, PUNTPORT, & FLGPS 58 AS B ORDER STATIONS.*

Comments:

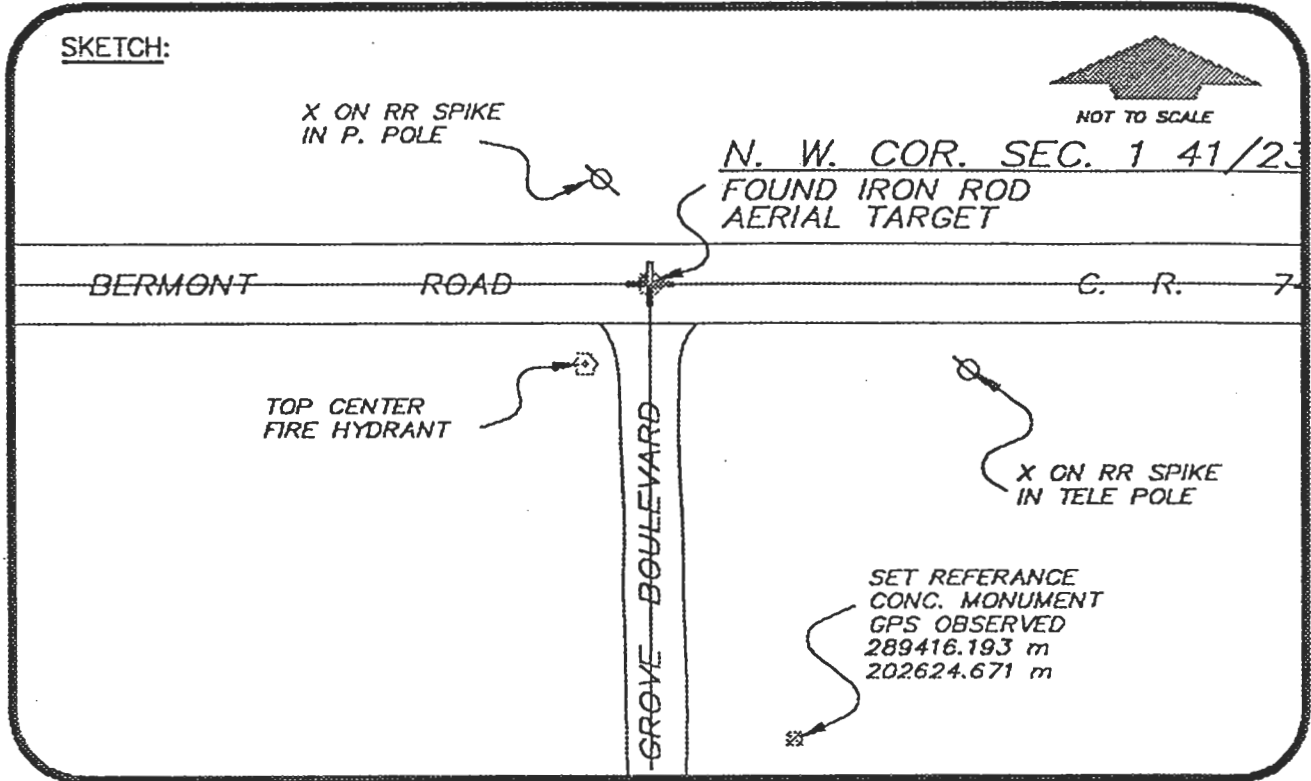
040000

4123A21

DOC. #

062848

SKETCH:



BASIS OF BEARING SOLAR OBSERVATION

REFER: FB 303/33

REFERENCE MEASUREMENTS

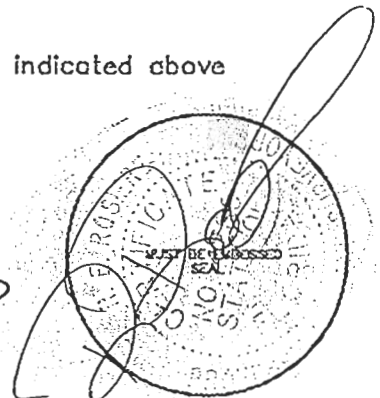
Description	Bearing	Distance
X ON RR SPIKE IN P. POLE	N 12°54'54" W	48.84'
X ON RR SPIKE IN T. POLE	S 70°35'06" E	136.16'
TOP CENTER F. HYDRANT	S 23°21'59" W	40.58'
SET REF. CONC. MON.	S 7°35'52" E	396.24'
	( S 7°36'35" E GRID )	

SURVEYORS CERTIFICATE: I certify the monument and accessories indicated above were field located on MARCH 22, 1994

*R. R. Ross* PLS 4260  
 SIGNATURE  
12/9/98 DATE  
 CHARLOTTE COUNTY SURVEY DEPT.  
 FROM OR AGENCY  
7000 FLORIDA STREET  
 ADDRESS  
PUNTA GORDA, FLORIDA 33950  
 CITY STATE

REVISED 12/9/98  
STATE PLANE

508  
Cleveland



Completeness checked by: *R. R. Ross*  
 Accepted and filed: 1-1-99 Date  
 B.L.M. - I.D. 01000001 D.E.P. USE ONLY

SEND TO:

Department of Environmental Protection  
Bureau of Survey and Mapping  
3900 Commonwealth Boulevard  
Mail Station 105  
Tallahassee, Florida 32399