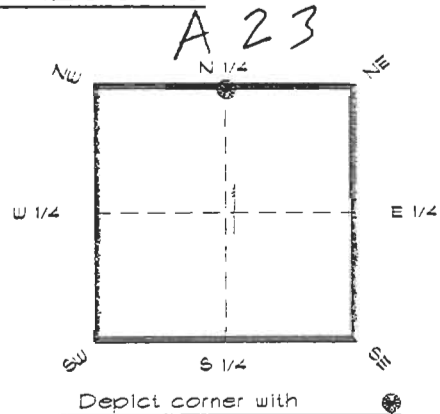


FLORIDA DEPARTMENT OF ENVIRONMENTAL PROTECTION
CERTIFIED CORNER RECORD

CORNER DESCRIPTION:

N. 1/4 corner of Section 1
Twp 41 S., Rge 23 E.
Tallahassee Base Meridian,
CHARLOTTE County(s), Florida.



MONUMENTATION DESCRIPTION:

Describe original monument and accessories, or subsequent restoration. Give sources of information. (If no attempt was made to search for the original monument and accessories, this information is not necessary.)

Description of corner evidence found:
80d SPIKE (BENT) ON SURFACE



JAN 31 2005

SURVEY & MAPPING

State method(s) to determine corner location (lost corners only):

HORIZONTAL POSITION INFORMATION (if determined):

Latitude 26°56'49.09419" N Longitude 81°57'56.10121" W
Y(Northing) 289529.041 m X(Easting) 203417.389 m Zone FLW
Convergence 0°00'56.147" Scale factor 0.99994132

Coordinate determination (circle one): Field traverse (GPS)

Horizontal datum (circle one): NAD27 NAD83(1986) (NAD83(1990)) other (explain)

Order of accuracy as defined in Standards and Specifications for Geodetic Control Networks published by the Federal Geodetic Control Committee (circle one):
1st, (2nd), 3rd, class 1

or Minimum Technical Standards (Chapter 6IG17, F.A.C.) ratio of closure for field data (example 1:10,000), _____ . This does not specify an order of accuracy.

Control point(s) used for survey: CHARLOTTE COUNTY HORIZONTAL CONTROL NETWORK INCLUDES HAVOLINE 2, FLACIDA 2, W260, PUNTPORT, & FLGPS 38 AS B ORDER STATIONS.

Comments:

4123A23

DOC. #

050959

SKETCH:

N. 1/4 COR. SEC. 14/23
FOUND 800 NAIL (BENT)
AERIAL TARGET



R.R. SPIKE IN
POWER POLE

BERMONT ROAD

C.R. 74

PK NAIL IN
14" PINE TREE

PK NAIL IN
TELE. POLE

SET REF. CONC. MON.
GPS OBSERVED
289441.215
203410.483

GEWANT BOULEVARD

BASIS OF BEARING SOLAR OBSERVATION

REFER: FB 25/33

REFERENCE MEASUREMENTS

Description	Bearing	Distance
R.R. SPIKE IN P. POLE	N 23°19'12" E	51.41'
PK NAIL IN TELE. POLE	S 27°00'10" E	50.03'
PK NAIL IN 14" PINE TREE	S 37°39'51" W	63.45'
SET REF. CONC. MON.	S 04°30'41" W	289.05'
	(S 04°29'45" W	GRID)

SURVEYORS CERTIFICATE: I certify the monument and accessories indicated above were field located on MARCH 24, 1994

R. Ross

PLS 4260

UPDATED JAN. 11, 1995

SIGNATURE

1/30/95

DATE

CHARLOTTE COUNTY SURVEY DEPT.

FIRM OR AGENCY

7000 FLORIDA STREET

ADDRESS

PUNTA GORDA, FLORIDA 33950

CITY

STATE

508
CLEVELAND



Completeness checked by: *B. Smith*

Accepted and filed: *3-1-95*

Date

BLM. - ID. *01CL0036*

DEF. USE ONLY

SEND TO:

Department of Environmental Protection
Bureau of Survey and Mapping
3900 Commonwealth Boulevard
Mail Station 105
Tallahassee, Florida 32399

01CL0036
0100