

4123A25

DOC. #

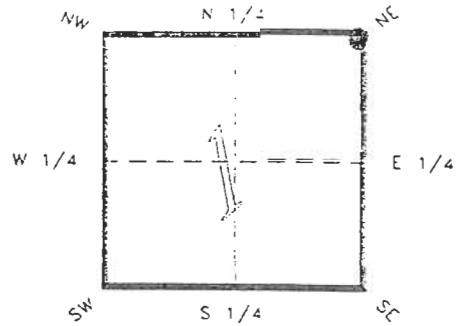
050960


FLORIDA DEPARTMENT OF ENVIRONMENTAL PROTECTION  
CERTIFIED CORNER RECORD

A 25

CORNER DESCRIPTION:

N.E. corner of Section 1 ,  
Twp 41 S. , Rge 23 E. ,  
Tallahassee Base Meridian,  
CHARLOTTE County(s), Florida.



Depict corner with 

MONUMENTATION DESCRIPTION:

Describe original monument and accessories, or subsequent restoration. Give sources of information. (If no attempt was made to search for the original monument and accessories, this information is not necessary.)

Description of corner evidence found:

*IRON ROD IN CENTER LINE OF PAVEMENT*

State method(s) to determine corner location (lost corners only): **JAN 31 1913**

*ORNEY & W. P. L. G.*

HORIZONTAL POSITION INFORMATION ( if determined ):

Latitude 26°56'48.87123" N Longitude 81°57'26.83576" W  
Y(Northing) 289522.425 m X(Easting) 204224.594 m Zone FLW  
Convergence 0°01'09.409" Scale factor 0.99994140

Coordinate determination (circle one): Field traverse GPS

Horizontal datum (circle one): NAD27 NAD83(1986) NAD83(1990) other (explain)

Order of accuracy as defined in "Standards and Specifications for Geodetic Control Networks" published by the Federal Geodetic Control Committee (circle one):  
1st, 2nd, 3rd, class 1 ,

or Minimum Technical Standards (Chapter 21HH-6, F.A.C.) ratio of closure for field data (example 1:10,000), \_\_\_\_\_ . This does not specify an order of accuracy.

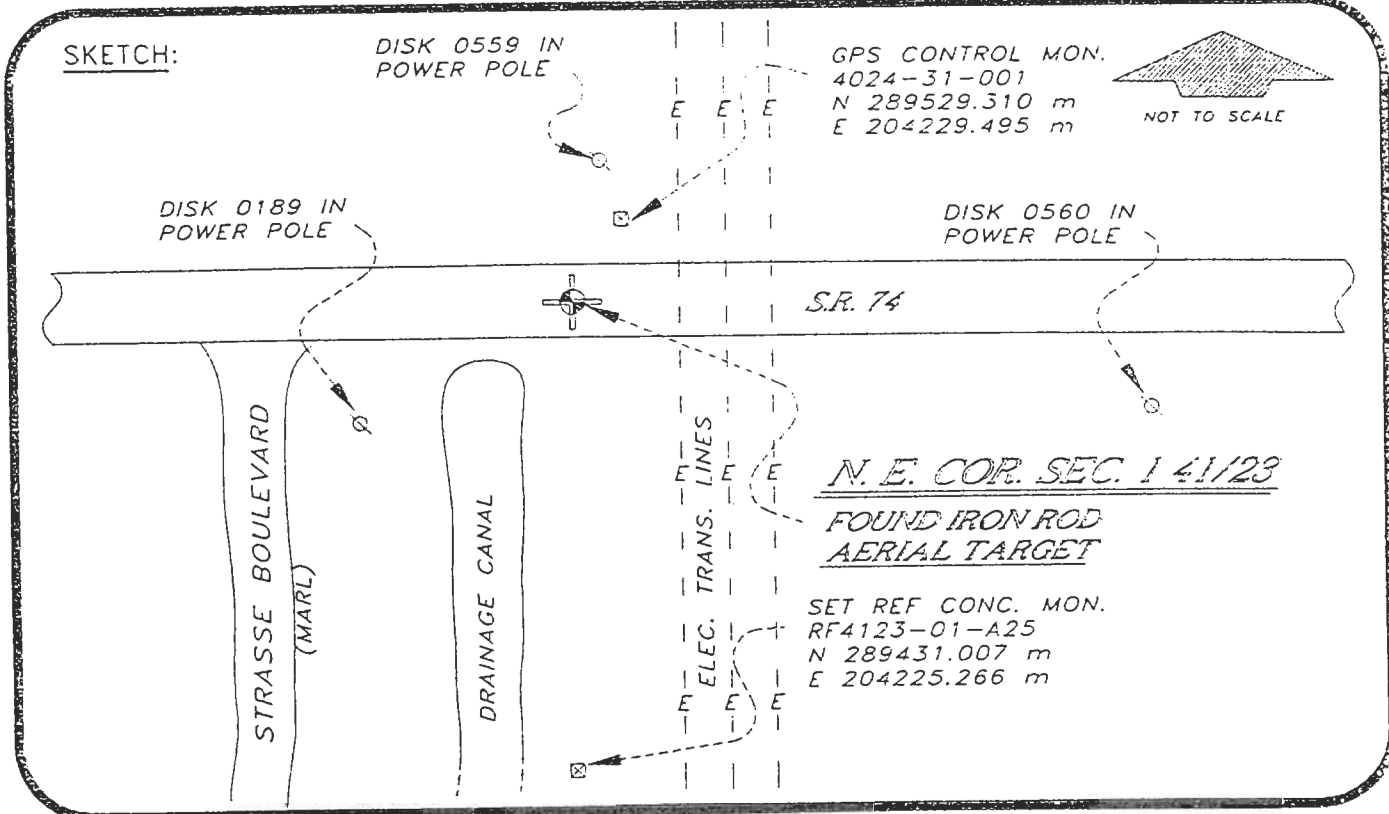
Control point(s) used for survey: *CHARLOTTE COUNTY HORIZONTAL CONTROL NETWORK INCLUDES HAVOLINE 2, PLACIDA 2, W260, PUNTAPORT, & FLGPS 58 AS B ORDER STATIONS.*

Comments:

050960

4123A25

DOC. #



BASIS OF BEARING GPS OBSERVATION

REFER FB 303/15

REFERENCE MEASUREMENTS

Description	Bearing	Distance
DISK 0560 IN P. POLE	S 75°18'56" E	180.14'
DISK 0559 IN P. POLE	N 09°35'50" E	48.53'
DISK 0189 IN P. POLE	S 56°44'34" W	80.53'
GPS MON. 4024-31-001	N 35°27'54" E	27.73'
SET REF. CONC. MON.	S 00°23'59" E	299.99'

SURVEYORS CERTIFICATE: I certify the monument and accessories indicated above were field located on NOVEMBER 23, 19 93.

JAN. 11, 1995

*R. Rose*  
SIGNATURE

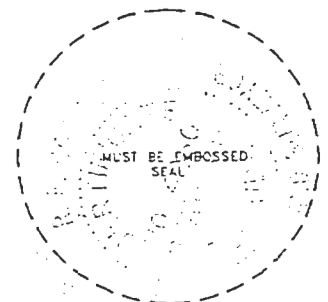
PLS 4260

1/30/95  
DATE

CHARLOTTE COUNTY SURVEY DEPT.

7000 FLORIDA STREET  
ADDRESS

PUNTA GORDA, FLA. 33950  
CITY STATE



508

SEND TO:

Department of Environmental Protection  
Bureau of Survey and Mapping  
3900 Commonwealth Boulevard  
Mail Station 105  
Tallahassee, Florida 32399

Completeness checked by: *B. Jentor*  
 Accepted and filed: 3-1-95 Date  
 B.L.M. - I.D. 01000006 D.N.R. USE ONLY

01000006