

4123C13

DOC. #

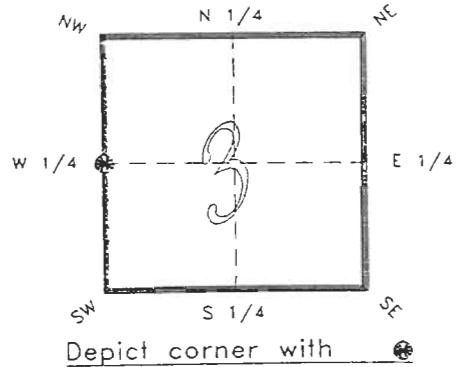
050970

FLORIDA DEPARTMENT OF ENVIRONMENTAL PROTECTION
CERTIFIED CORNER RECORD

C13

CORNER DESCRIPTION:

W. 1/4 corner of Section 3,
Twp 41 S., Rge 23 E.,
Tallahassee Base Meridian,
CHARLOTTE County(s), Florida.



MONUMENTATION DESCRIPTION:

Describe original monument and accessories, or subsequent restoration. Give sources of information. (If no attempt was made to search for the original monument and accessories, this information is not necessary.)

Description of corner evidence found:

CONCRETE MONUMENT WITH 1/2" IRON ROD

State method(s) to determine corner location (lost corners only):

RECEIVED
JAN 31 1995
SURVEY & MAPPING

HORIZONTAL POSITION INFORMATION (if determined):

Latitude 26°56'23.39076" N Longitude 82°00'21.28968" W
Y(Northing) 288737.523 m X(Easting) 199412.749 m Zone FLW
Convergence -0°00'09.645" Scale factor 0.99994118

Coordinate determination (circle one): Field traverse GPS

Horizontal datum (circle one): NAD27 NAD83(1986) NAD83(1990) other (explain)

Order of accuracy as defined in "Standards and Specifications for Geodetic Control Networks" published by the Federal Geodetic Control Committee (circle one):
1st, 2nd, 3rd, class 1

or Minimum Technical Standards (Chapter 21HH-6, F.A.C.) ratio of closure for field data (example 1:10,000), . This does not specify an order of accuracy.

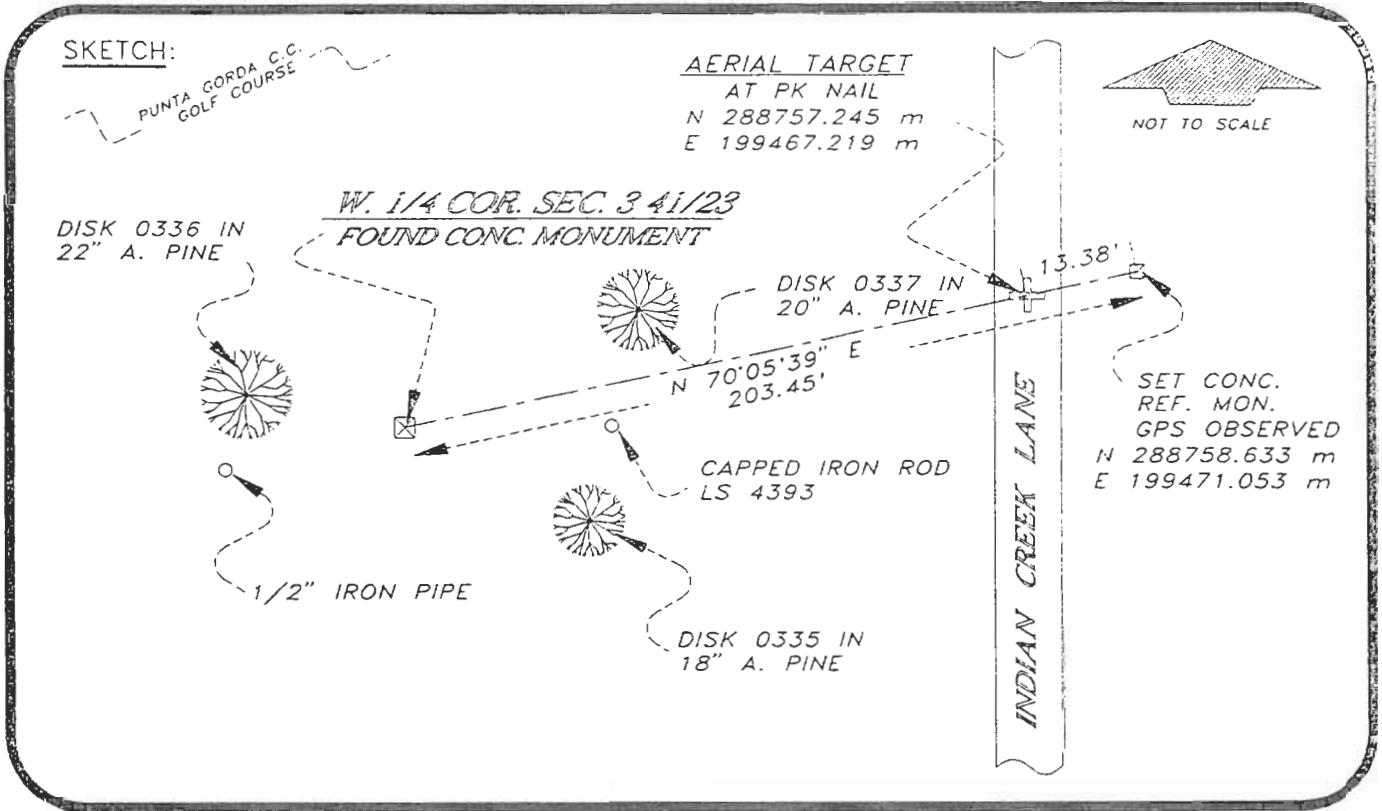
Control point(s) used for survey: CHARLOTTE COUNTY HORIZONTAL CONTROL NETWORK INCLUDES HAVOLINE 2, PLACIDA 2, W260, PUNTAPOINT, & FLGPS 58 AS B ORDER STATIONS.

Comments:

4123C13

DOC. #

050970



BASIS OF BEARING SOLAR OBSERVATION REFER: FB 301/46

REFERENCE MEASUREMENTS

Description	Bearing	Distance
DISK 0335 IN 18" A. PINE	S 78°36'36" E	49.91'
DISK 0336 IN 22" A. PINE	N 85°17'56" W	26.28'
DISK 0337 IN 20" A. PINE	N 59°54'19" E	64.13'
CAPPED IRON ROD LS 4393	N 87°00'41" E	50.34'
1/2" IRON PIPE	S 85°32'04" W	28.92'
SET REF. CONC. MON.	N 70°05'39" E	203.45'
	N 70°05'48" E (GRID)	

SURVEYORS CERTIFICATE: I certify the monument and accessories indicated above were field located on NOVEMBER 15, 19 93.

Signature of R. P. Rose

PLS 4260

UPDATED 1/24/95

SIGNATURE

1/30/95

DATE

CHARLOTTE COUNTY SURVEY DEPT.

FIRM OR AGENCY

7000 FLORIDA STREET

ADDRESS

PUNTA GORDA,

FLA.

33950

CITY

STATE

509



Completeness checked by: B. Bent

Accepted and filed: 3-1-195 Date

B.L.M. - I.D. 0400CLO3 D.N.R. USE ONLY

SEND TO:

Department of Environmental Protection
Bureau of Survey and Mapping
3900 Commonwealth Boulevard
Mail Station 105
Tallahassee, Florida 32399