

4123C21

DOC. #

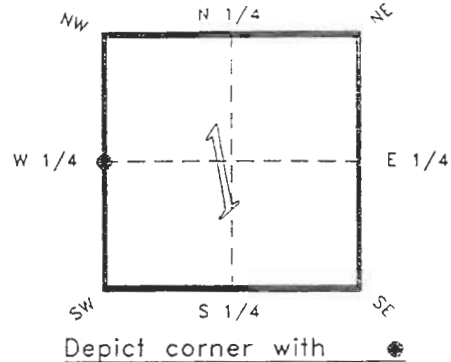
050962

FLORIDA DEPARTMENT OF ENVIRONMENTAL PROTECTION  
CERTIFIED CORNER RECORD

C 21

CORNER DESCRIPTION:

W. 1/4 corner of Section 1 ,  
Twp 41 S. , Rge 23 E. ,  
Tallahassee Base Meridian,  
CHARLOTTE County(s), Florida.

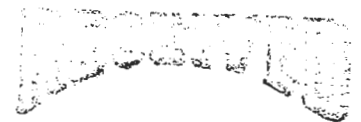


MONUMENTATION DESCRIPTION:

Describe original monument and accessories, or subsequent restoration. Give sources of information. (If no attempt was made to search for the original monument and accessories, this information is not necessary.)

Description of corner evidence found:

IRON ROD, REPLACED WITH CONCRETE MONUMENT



JAN 31 1995

State method(s) to determine corner location (lost corners only):

SURVEY & MAPPING

HORIZONTAL POSITION INFORMATION ( if determined ):

Latitude 26°56'20.32338" N Longitude 81°58'23.88098" W  
Y(Northing) 288643.385 m X(Easting) 202651.352 m Zone FLW  
Convergence 0°00'43.546" Scale factor 0.99994126

Coordinate determination (circle one): Field traverse  GPS

Horizontal datum (circle one): NAD27 NAD83(1986)  NAD83(1990) other (explain)

Order of accuracy as defined in "Standards and Specifications for Geodetic Control Networks" published by the Federal Geodetic Control Committee (circle one):  
1st,  2nd, 3rd, class 7

or Minimum Technical Standards (Chapter 21HH-6, F.A.C.) ratio of closure for field data (example 1:10,000), . This does not specify an order of accuracy.

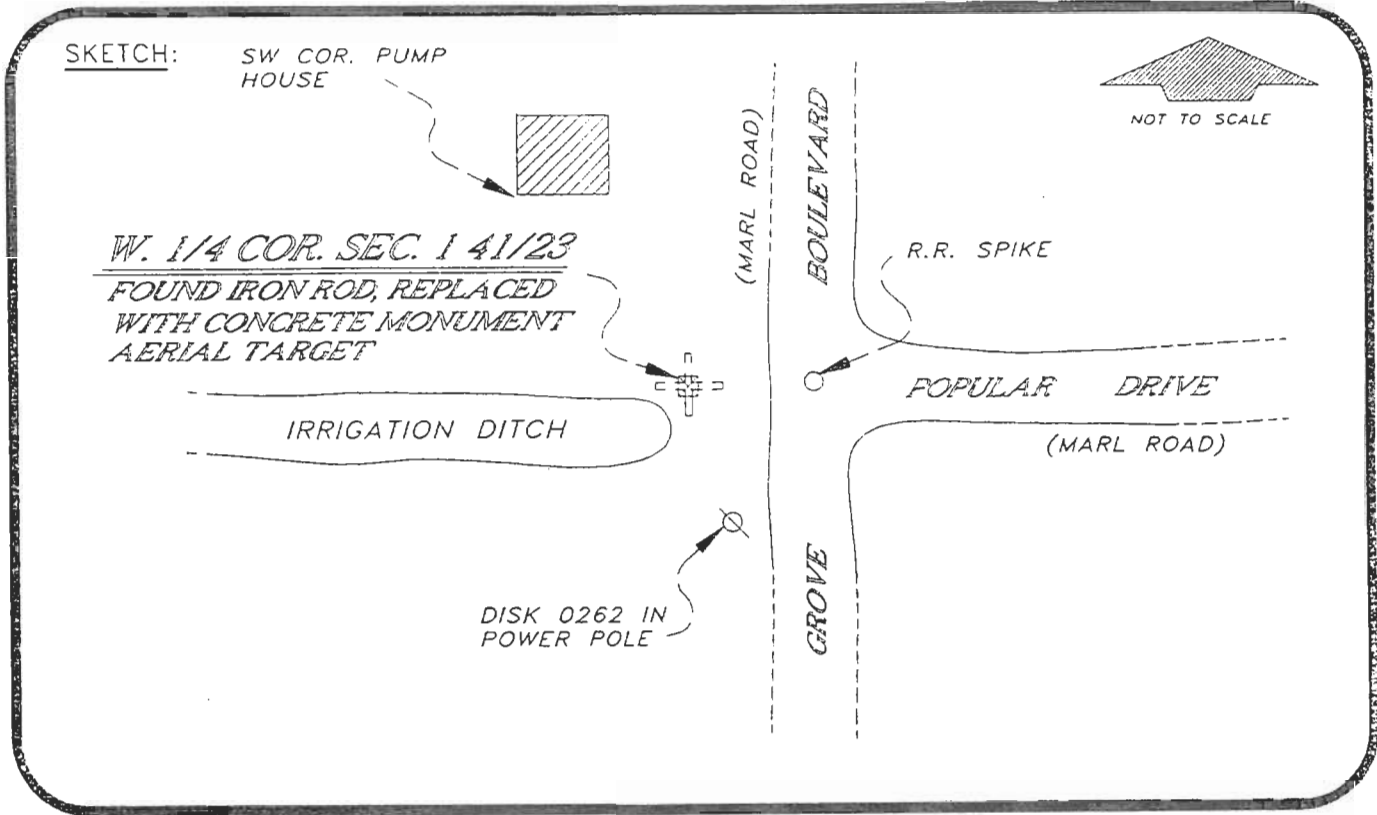
Control point(s) used for survey: CHARLOTTE COUNTY HORIZONTAL CONTROL NETWORK INCLUDES HAVOLINE 2, PLACIDA 2, W260, PUNTAPORT, & FLGPS 58 AS B ORDER STATIONS.

Comments:

050962

4123C21

DOC. #



BASIS OF BEARING SOLAR OBSERVATION

REFER: FB FB 283/43

REFERENCE MEASUREMENTS

<u>Description</u>	<u>Bearing</u>	<u>Distance</u>
RAILROAD SPIKE	S 89°51'17" E	19.92'
DISK 0262 IN P. POLE	S 16°10'41" E	23.42'
SW COR. PUMP HOUSE	N 35°10'32" W	69.66'

SURVEYORS CERTIFICATE: I certify the monument and accessories indicated above were field located on MAY 26, 19 93.

*R. Rose*

PLS 4260

UPDATED 1/24/95

SIGNATURE

1/30/95

DATE

CHARLOTTE COUNTY SURVEY DEPT.

FIRM OR AGENCY

7000 FLORIDA STREET

ADDRESS

PUNTA GORDA, CITY

FLA. STATE

33950

508



Completeness checked by: *B. Denton*  
 Accepted and filed: 3-1-95 Date  
 B.L.M. - I.D. 0200CLO1 D.N.R. USE ONLY

SEND TO:

Department of Environmental Protection  
Bureau of Survey and Mapping  
3900 Commonwealth Boulevard  
Mail Station 105  
Tallahassee, Florida 32399