

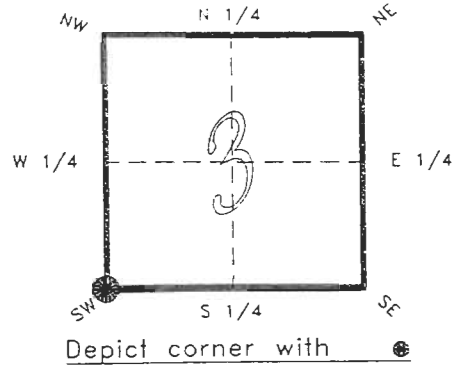
4123E13

FLORIDA DEPARTMENT OF NATURAL RESOURCES  
CERTIFIED CORNER RECORD

E 13

CORNER DESCRIPTION:

S.W. corner of Section 3,  
Twp 41 S., Rge 23 E.,  
Tallahassee Base Meridian,  
CHARLOTTE County(s), Florida.



MONUMENTATION DESCRIPTION:

Describe original monument and accessories, or subsequent restoration. Give sources of information. (If no attempt was made to search for the original monument and accessories, this information is not necessary.)

Description of corner evidence found:

CONCRETE MONUMENT WITH ALUM. DISK SET MONUMENT WELL OVER.

State method(s) to determine corner location (lost corners only):

HORIZONTAL POSITION INFORMATION ( if determined ):

Latitude 26°55'57.00531" N Longitude 82°00'19.84331" W  
Y(Northing) 287925.465 m X(Easting) 199452.610 m Zone FLW  
Convergence -0°00'08.988" Scale factor 0.99994118

Coordinate determination (circle one):

Field traverse

GPS

Horizontal datum (circle one):

NAD27

NAD83(1986)

NAD83(1990)

other (explain)

Order of accuracy as defined in "Standards and Specifications for Geodetic Control Networks" published by the Federal Geodetic Control Committee (circle one):

1st, 2nd, 3rd, class 1

or Minimum Technical Standards (Chapter 21HH-6, F.A.C.) ratio of closure for field data (example 1:10,000), . This does not specify an order of accuracy.

Control point(s) used for survey:

CHARLOTTE COUNTY HORIZONTAL CONTROL NETWORK

Comments:

RECEIVED

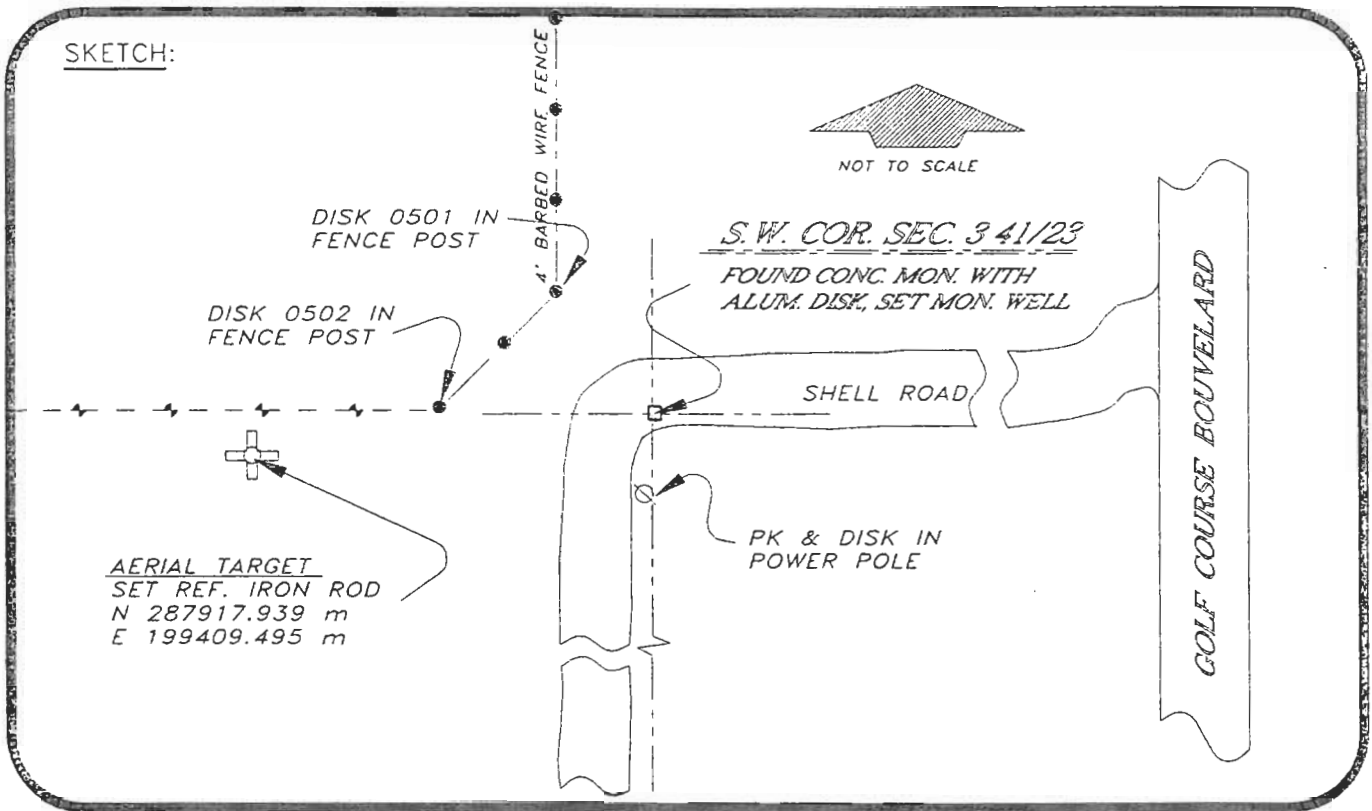
FEB 20 1995

SURVEY & MAPPING

4123E13

DOC. #

050971



BASIS OF BEARING SOLAR OBSERVATION REF FB 283/45

All bearings and distances must be from the corner to the witness. Indicate whether corner was found, set, or replaced and show north arrow.

SET SURVEY MARKER POST 3.0' S'LY  
REFERENCE MEASUREMENTS ( at least three vicinity references must be given below even if they appear on the above sketch ):

Description	Bearing	Distance
DISK 0502 IN FENCE POST	S 88°02'11" W	75.04"
DISK 0501 IN FENCE POST	N 23°23'15" W	79.64'
PK & DISK IN POWER POLE	S 04°35'13" W	26.45'
AERIAL TARGET	S 80°05'46" W	140.31"

SURVEYORS CERTIFICATE: I certify the monument and accessories indicated above were field located on JUNE 6, 19 93

UPDATED 2/1/95

*[Signature]*  
SIGNATURE

PLS 4260

2-15-95  
DATE

CHARLOTTE COUNTY SURVEY DEPT.

FIRM OR AGENCY

7000 FLORIDA STREET

ADDRESS

PUNTA GORDA, FLA. 33950

CITY

STATE

509



Completeness checked by: B. Linton  
 Accepted and filed: 3-1-95 Date  
 B.L.M. - I.D. 09040310 D.N.R. USE ONLY

SEND TO:

Department of Natural Resources  
Bureau of Survey and Mapping  
3900 Commonwealth Boulevard  
Mail Station 105  
Tallahassee, Florida 32399

DNR 53-001(16)  
REV. 7/16/92  
PAGE 2 OF 2