

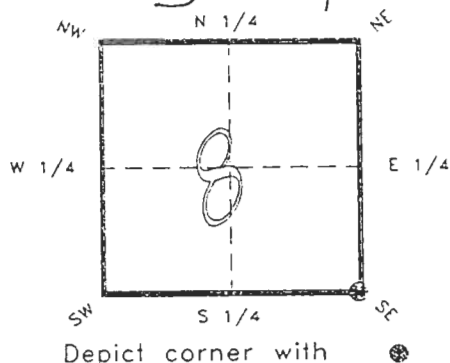
4123J09

FLORIDA DEPARTMENT OF ENVIRONMENTAL PROTECTION  
CERTIFIED CORNER RECORD

J09

CORNER DESCRIPTION:

S.E. corner of Section 8  
Twp 41 S., Rge 23 E.  
Tallahassee Base Meridian,  
CHARLOTTE County(s), Florida.



MONUMENTATION DESCRIPTION:

Describe original monument and accessories, or subsequent restoration. Give sources of information. (If no attempt was made to search for the original monument and accessories, this information is not necessary.)

Description of corner evidence found:

CONCRETE MONUMENT, SET WELL & ACCESS COVER OVER.

State method(s) to determine corner location (lost corners only):

HORIZONTAL POSITION INFORMATION ( if determined ):

Latitude 26°55'01.56401" N Longitude 82°01'23.00056" W

Y(Northing) 286219.366 m X(Easting) 197710.067 m Zone FLW

Convergence -0°00'37.574" Scale factor 0.99994124

Coordinate determination (circle one): Field traverse GPS

Horizontal datum (circle one): NAD27 NAD83(1986) NAD83(1990) other (explain)

Order of accuracy as defined in "Standards and Specifications for Geodetic Control Networks" published by the Federal Geodetic Control Committee (circle one):  
1st, 2nd, 3rd, class 1

or Minimum Technical Standards (Chapter 21HH-6, F.A.C.) ratio of closure for field data (example 1:10,000), . This does not specify an order of accuracy.

Control point(s) used for survey: CHARLOTTE COUNTY HORIZONTAL CONTROL NETWORK INCLUDES HAVOLINE 2, PLACIDA 2, W260, PUNTAPORT, & FLGPS STATIONS.

Comments:

RECEIVED

FEB 20 1995

4123J09

DOC. #

050978

SKETCH:



DISK 0524 IN POWER POLE

DISK 0525 IN POWER POLE



S.E. COR. SEC. 8 41/23  
SET WELL OVER EXISTING  
CONCRETE MONUMENT

AERIAL TARGET  
AT REF. PK NAIL  
N 286218.671 m  
E 197723.823 m

DISK 0526 IN GUY POLE

LIFT STATION

BASIS OF BEARING SOLAR OBSERVATION

REFER: FB 283/85

REFERENCE MEASUREMENTS

| <u>Description</u>      | <u>Bearing</u> | <u>Distance</u> |
|-------------------------|----------------|-----------------|
| DISK 0524 IN POWER POLE | N 73°54'01" W  | 180.46'         |
| DISK 0525 IN POWER POLE | N 51°04'22" E  | 85.08'          |
| DISK 0526 IN POWER POLE | S 54°30'27" E  | 82.00'          |
| AERIAL TARGET           | S 87°05'47" E  | 45.19'          |

SURVEYORS CERTIFICATE: I certify the monument and accessories indicated above were field located on OCTOBER 22, 19 93.

*R. P. Rose*  
SIGNATURE

PLS 4260

UPDATED 2/1/95

2-15-95  
DATE

CHARLOTTE COUNTY SURVEY DEPT.  
FIRM OR AGENCY

7000 FLORIDA STREET  
ADDRESS

PUNTA GORDA, FLA. 33950  
CITY STATE

509



Completeness checked by: B. Pinto  
Accepted and filed: 3-1-95 Date  
B.L.M. - I.D. 17080916 D.N.R. USE ONLY

SEND TO:

Department of Environmental Protection  
Bureau of Survey and Mapping  
3900 Commonwealth Boulevard  
Mail Station 105  
Tallahassee, Florida 32399