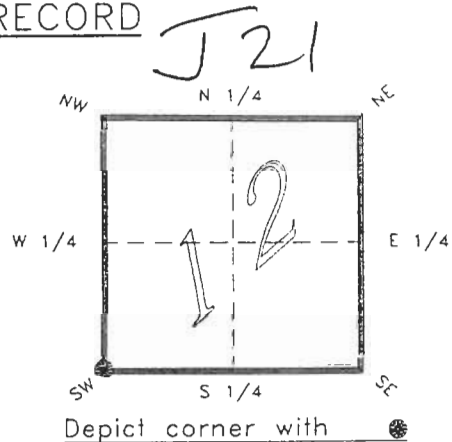


4123J21

FLORIDA DEPARTMENT OF ENVIRONMENTAL PROTECTION
CERTIFIED CORNER RECORD

CORNER DESCRIPTION:

S.W. corner of Section 12 ,
Twp 41 S. , Rge 23 E. ,
Tallahassee Base Meridian,
CHARLOTTE County(s), Florida.

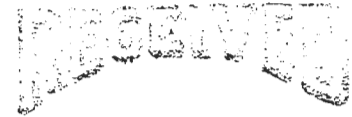


MONUMENTATION DESCRIPTION:

Describe original monument and accessories, or subsequent restoration. Give sources of information. (If no attempt was made to search for the original monument and accessories, this information is not necessary.)

Description of corner evidence found:

2" IRON PIPE



State method(s) to determine corner location (lost corners only): JAN 31 1995

HORIZONTAL POSITION INFORMATION (if determined):

SURVEY & MAPPING

Latitude 26°55'01.27529"N Longitude 81°58'23.21403" W

Y(Northing) 286210.555 m X(Easting) 202670.266 m Zone FLW

Convergence 0°00'43.815" Scale factor 0.99994126

Coordinate determination (circle one): Field traverse GPS

Horizontal datum (circle one): NAD27 NAD83(1986) NAD83(1990) other (explain)

Order of accuracy as defined in "Standards and Specifications for Geodetic Control Networks" published by the Federal Geodetic Control Committee (circle one):

1st, 2nd, 3rd, class 1 ,

or Minimum Technical Standards (Chapter 21HH-6, F.A.C.) ratio of closure for field data (example 1:10,000), _____ . This does not specify an order of accuracy.

Control point(s) used for survey: CHARLOTTE COUNTY HORIZONTAL CONTROL NETWORK INCLUDES HAVOLINE 2, PLACIDA 2, W260, PUNTAPORT, & FLGPS 58 AS B ORDER STATIONS.

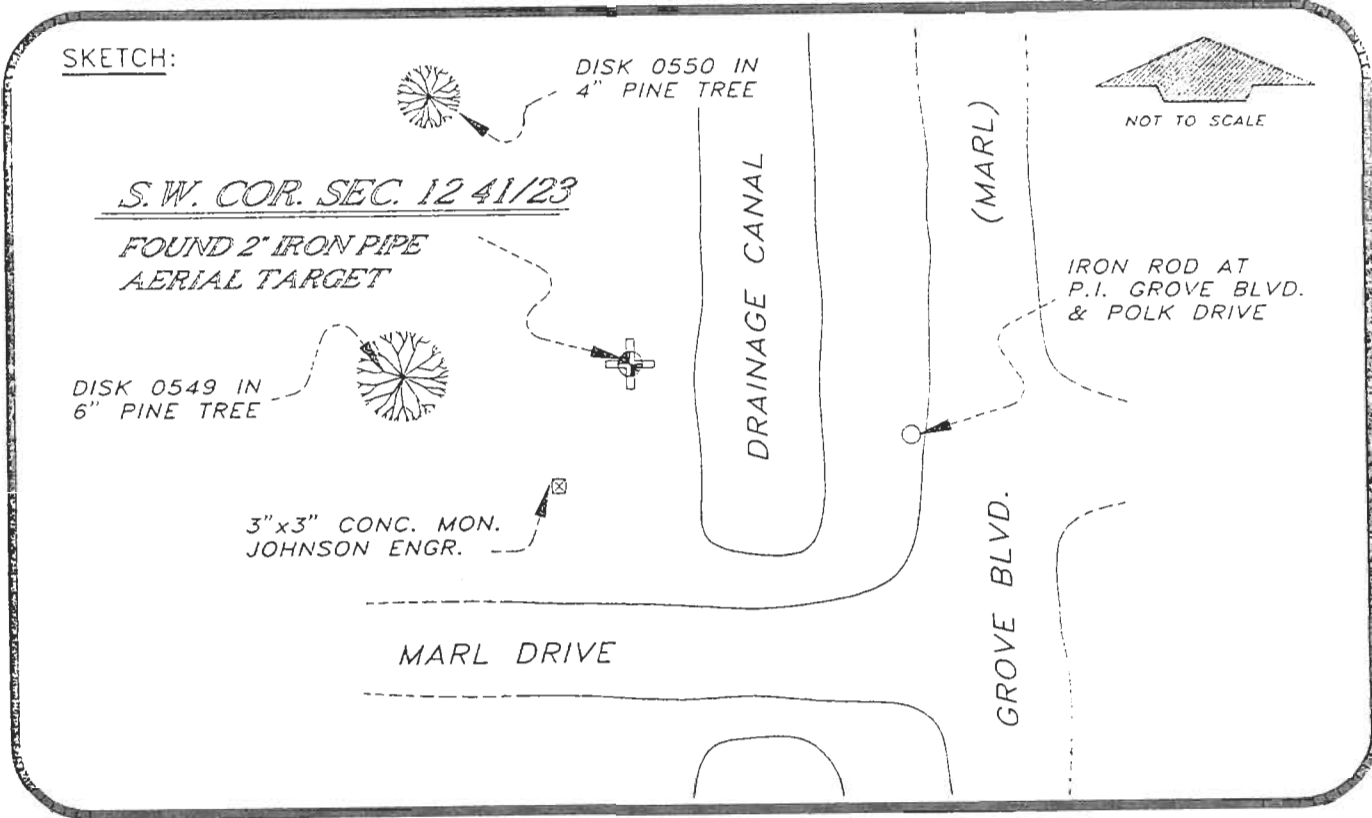
Comments: THE 2" IRON PIPE APPEARS TO MATCH BETTER TO CHARLOTTE RANCHETTES AN UNRECORDED SUBDIVISION THAN JOHNSON ENGR. CONC. MON. HOWEVER THERE ARE SIGNIFICANT DISCREPANCIES BETWEEN EXISTING MOMUMENTATION THAT MAY ONLY BE RESOLVED BY LITIGATION.

050984

4123J21

DOC. #

SKETCH:



BASIS OF BEARING SOLAR OBSERVATION REFER: FB 303/11

REFERENCE MEASUREMENTS

Description	Bearing	Distance
DISK 0550 IN 4" PINE	N 27°07'59" W	74.95'
DISK 0549 IN 6" PINE	S 89°44'30" W	45.70'
3"x3" CONC. MON.	S 27°09'52" W	27.56'
IRON ROD AT P.I.	S 83°52'13" E	54.32'

SURVEYORS CERTIFICATE: I certify the monument and accessories indicated above were field located on NOVEMBER 15, 19 93.

R. Rose
SIGNATURE

PLS 4260

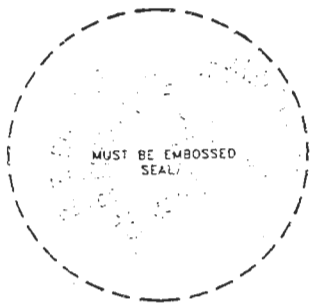
UPDATED 1/24/95

1/30/95
DATE

CHARLOTTE COUNTY SURVEY DEPT.
FIRM OR AGENCY

7000 FLORIDA STREET
ADDRESS

PUNTA GORDA, FLA. 33950
CITY STATE



508

Completeness checked by: B. Jint
 Accepted and filed: 3-1-95 Date
 B.L.M. - I.D. 1411213 D.N.R. USE ONLY

SEND TO:
 Department of Environmental Protection
 Bureau of Survey and Mapping
 3900 Commonwealth Boulevard
 Mail Station 105
 Tallahassee, Florida 32399