

4/23/95

FLORIDA DEPARTMENT OF ENVIRONMENTAL PROTECTION  
CERTIFIED CORNER RECORD

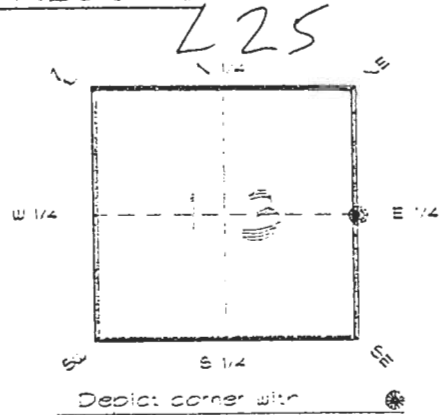
CORNER DESCRIPTION:

E. 1/4 corner of Section 13

Twp 41 S. Rge 23 E.

Tallahassee Base Meridian.

CHARLOTTE County(s) Florida.



MONUMENTATION DESCRIPTION:

Describe original monument and accessories, or subsequent restoration. Give sources of information. (If no attempt was made to search for the original monument and accessories, this information is not necessary.)

Description of corner evidence found:

FOUND L.WOOD POST REPLACED WITH CONCRETE MONUMENT

State method(s) to determine corner location (lost corners only):

HORIZONTAL POSITION INFORMATION (if determined)

Latitude 26°54'34.42554" N Longitude 81°57'26.17653" W

Y(Northing) 285384.645 m X(Easting) 204244.175 m Zone FLW

Convergence 0°01'09.618" Scale factor 0.99994140

Coordinate determination (circle one): Field traverse (GPS)

Horizontal datum (circle one): NAD27 NAD83(1986) (NAD83(1990)) other (explain)

Order of accuracy as defined in Standards and Specifications for Geodetic Control Networks published by the Federal Geodetic Control Committee (circle one): 1st, (2nd), 3rd, class \_\_\_\_\_

or Minimum Technical Standards (Chapter 61G17 F.A.C.) ratio of closure for field data (example 1:10,000), \_\_\_\_\_ This does not specify an order of accuracy.

Control point(s) used for survey: CHARLOTTE COUNTY HORIZONTAL CONTROL NETWORK INCLUDES HAVOLINE 2, FLACIDA 2, W260, PUNTPORT, & FLGPS 56 AS B ORDER STATIONS.

Comments:  
REVISION DUE TO READJUSTMENT

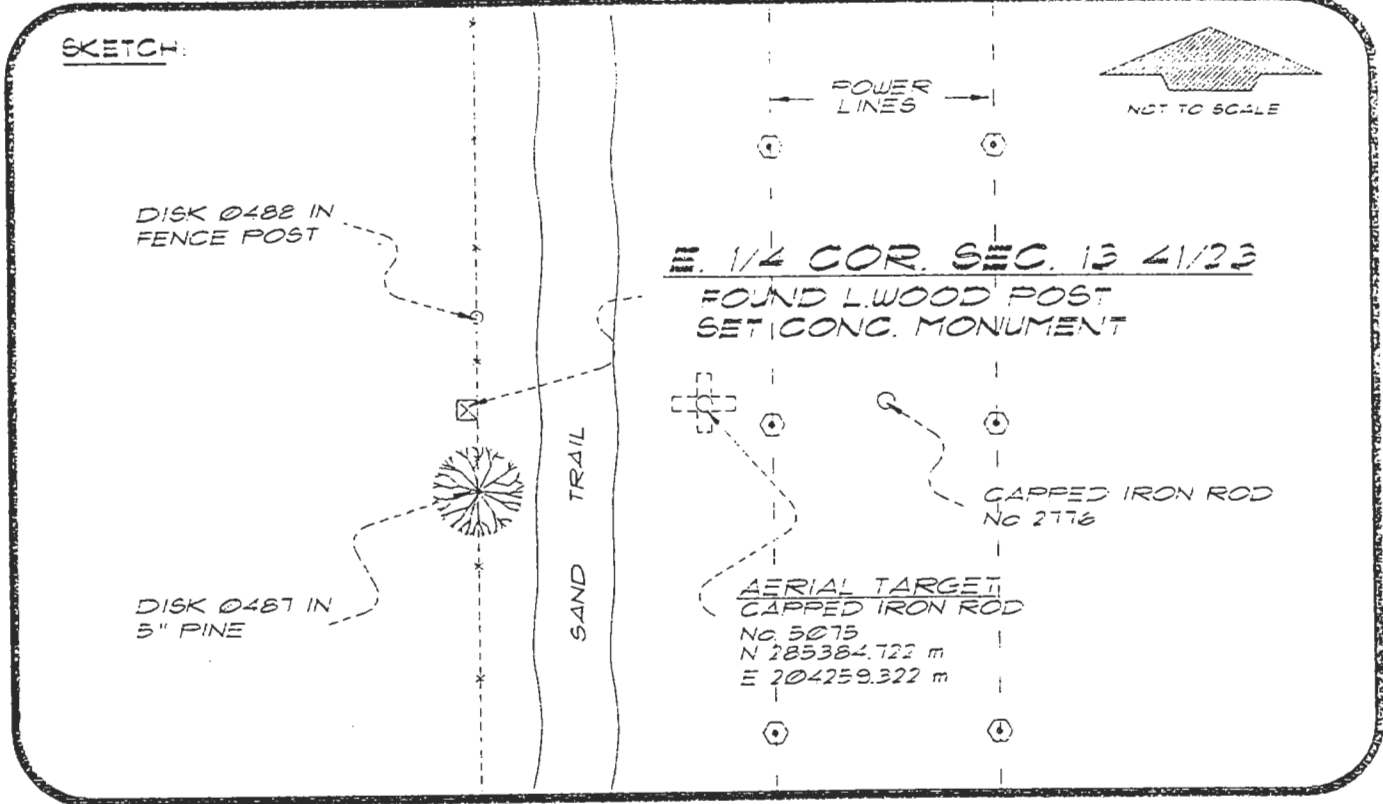


FEB 20 1995

050985

4123L25

DOC. #



BASIS OF BEARING SOLAR OBSERVATION REFER: FB 283/18

REFERENCE MEASUREMENTS

Description	Bearing	Distance
SET IRON ROD No 2776	N 89°43'46" E	99.67'
FD. IRON ROD No 5075	N 89°47'50" E	49.70'
DISK Ø487 IN 5" PINE	S 11°10'05" E	10.69'
DISK Ø488 IN FENCE POST	N 10°24'07" E	12.78'

SURVEYORS CERTIFICATE: I certify the monument and accessories indicated above were field located on MAY 5, 1993

*R. Rose*  
SIGNATURE

PLS 4260

UPDATED 2/13/95

2-15-95  
DATE

CHARLOTTE COUNTY SURVEY DEPT.  
FIRM OR AGENCY

7000 FLORIDA STREET  
ADDRESS

PUNTA GORDA, FLORIDA 33950  
CITY STATE

508



Completeness checked by: *B. Hunter*  
 Accepted and filed: 3-1-95 Date  
 BLM - ID. 1300CL18 DNR USE ONLY

SEND TO:

Department of Environmental Protection  
Bureau of Survey and Mapping  
3900 Commonwealth Boulevard  
Mail Station 105  
Tallahassee, Florida 32399