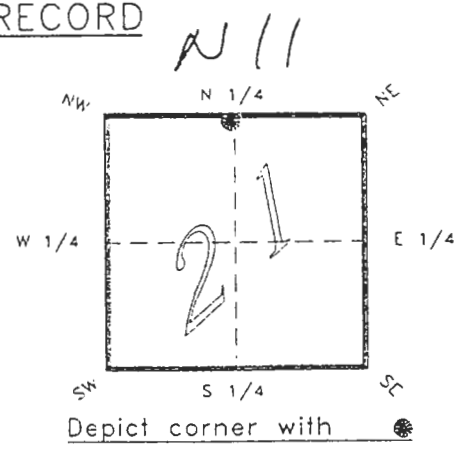


4123N11
FLORIDA DEPARTMENT OF ENVIRONMENTAL PROTECTION
CERTIFIED CORNER RECORD

CORNER DESCRIPTION:

N. 1/4 corner of Section 21 ,
Twp 41 S. , Rge 23 E. ,
Tallahassee Base Meridian,
CHARLOTTE County(s), Florida.



MONUMENTATION DESCRIPTION:

Describe original monument and accessories, or subsequent restoration. Give sources of information. (If no attempt was made to search for the original monument and accessories, this information is not necessary.)

Description of corner evidence found:

CONCRETE MONUMENT WITH TOP BROKEN 2' BELOW GRADE

State method(s) to determine corner location (lost corners only):

HORIZONTAL POSITION INFORMATION (if determined):

Latitude 26°54'07.54905" N Longitude 82°00'51.98014" W
Y(Northing) 284556.845 m X(Easting) 198565.711 m Zone FLW
Convergence -0°00'23.519" Scale factor 0.99994120

Coordinate determination (circle one): Field traverse GPS

Horizontal datum (circle one): NAD27 NAD83(1986) NAD83(1990) other (explain)

Order of accuracy as defined in "Standards and Specifications for Geodetic Control Networks" published by the Federal Geodetic Control Committee (circle one):
1st, 2nd, 3rd, class 1

or Minimum Technical Standards (Chapier 21HH-6, F.A.C.) ratio of closure for field data (example 1:10,000), _____ . This does not specify an order of accuracy.

Control point(s) used for survey: CHARLOTTE COUNTY HORIZONTAL CONTROL NETWORK INCLUDES HAVOLINE 2, PLACIDA 2, W260, PUNTPORT, & FLGPS 58 AS B ORDER STATIONS.

Comments:

4123N11

DOC. #

050996

SKETCH:

DISK 0554 IN
12" PINE TREE



N. 1/4 COR. SEC. 21 41/23

FOUND CONC. MON. WITH
TOP BROKEN

FENCE

FENCE

GRASS TRAIL

DRAINAGE DITCH

DISK 0555 IN
15" PINE TREE



DISK 0556 IN
8" PINE TREE



AERIAL TARGET
SET REF CAPPED
IRON ROD LS2776
N 284553.050 m
E 198587.151 m

BASIS OF BEARING SOLAR OBSERVATION
SET SURVEY MARKER POST 3.0' W'LY

REFER: FB 303/21

REFERENCE MEASUREMENTS

Description	Bearing	Distance
DISK 0554 IN 12" PINE TREE	N 05°09'04" W	109.77'
DISK 0555 IN 15" PINE TREE	N 64°34'30" E	88.28'
DISK 0556 IN 8" PINE TREE	S 34°39'13" W	44.34'
SET IRON ROD LS #2776	S 79°57'17" E	71.44'

SURVEYORS CERTIFICATE: I certify the monument and accessories indicated above
were field located on NOVEMBER 19, 19 93.

R. Ross
SIGNATURE

PLS 4260

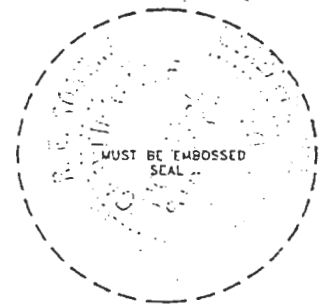
UPDATED 1/26/95

1/30/95
DATE

CHARLOTTE COUNTY SURVEY DEPT.

7000 FLORIDA STREET
ADDRESS

PUNTA GORDA, FLA. 33950
CITY STATE



509

Completeness checked by: B. Dinto
 Accepted and filed: 3-1-95 Date
 B.L.M. - I.D. 21CLO016 D.N.R. USE ONLY

SEND TO:

Department of Environmental Protection
Bureau of Survey and Mapping
3900 Commonwealth Boulevard
Mail Station 105
Tallahassee, Florida 32399