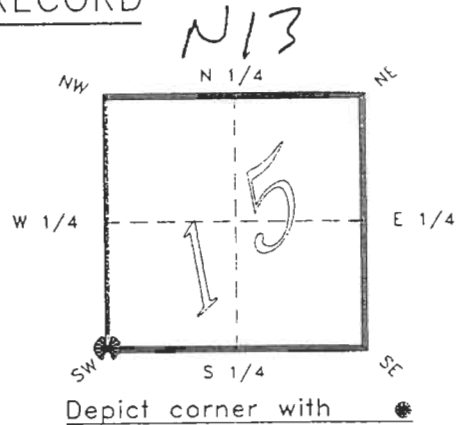


4123N13

FLORIDA DEPARTMENT OF NATURAL RESOURCES
CERTIFIED CORNER RECORD

CORNER DESCRIPTION:

S.W. corner of Section 15 ,
Twp 41 S. , Rge 23 E. ,
Tallahassee Base Meridian,
CHARLOTTE County(s), Florida.



MONUMENTATION DESCRIPTION:

Describe original monument and accessories, or subsequent restoration. Give sources of information. (If no attempt was made to search for the original monument and accessories, this information is not necessary.)

Description of corner evidence found:

4"x4" CONCRETE MONUMENT REPORTED TO BE SET BY MARTIIN AS SURVEYOR. REFER DNR CCR DOC. # 0004205

State method(s) to determine corner location (lost corners only):

RECEIVED

JAN 31 1995

HORIZONTAL POSITION INFORMATION (if determined):

Latitude 26°54'07.24625" Longitude 82°00'21.19625" SURVEY & MAPPING
Y(Northing) 284547.458 m X(Easting) 199415.131 m Zone FL W
Convergence -0°00'09.591" Scale factor 0.99994118

Coordinate determination (circle one):

Field traverse

GPS

Horizontal datum (circle one): NAD27 NAD83(1986) NAD83(1990) other (explain)

Order of accuracy as defined in "Standards and Specifications for Geodetic Control Networks" published by the Federal Geodetic Control Committee (circle one):
1st, 2nd, 3rd, class 1 ,

or Minimum Technical Standards (Chapter 21HH-6, F.A.C.) ratio of closure for field data (example 1:10,000), _____ . This does not specify an order of accuracy.

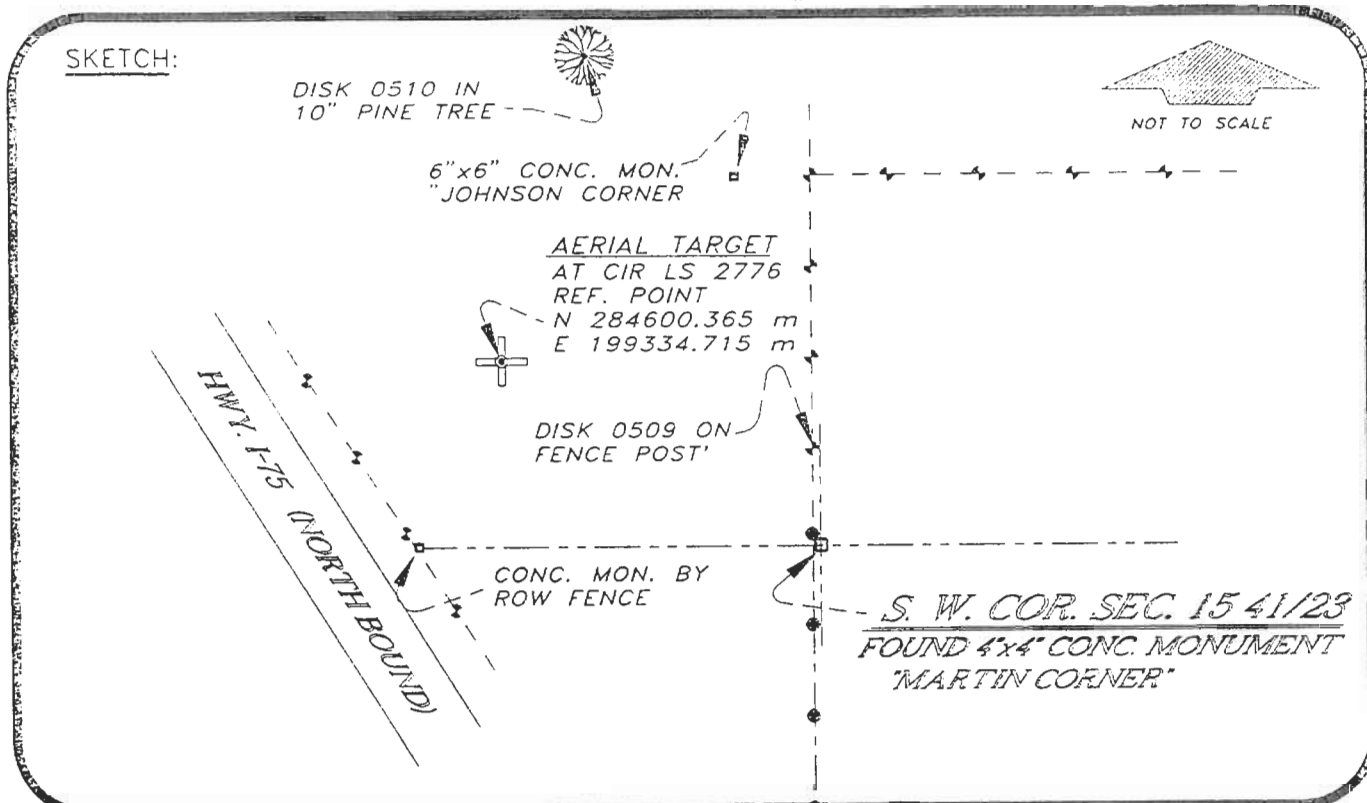
Control point(s) used for survey:

CHARLOTTE COUNTY HORIZONTAL CONTROL NETWORK

Comments:

THIS "MARTIN" CORNER HAS BEEN UPHELD AS THE CORNER BY COURT RULING PER J.H. McQUEEN

SKETCH:



BASIS OF BEARING SOLAR OBSERVATION

REFER FB 283/56

All bearings and distances must be from the corner to the witness. Indicate whether corner was found, set, or replaced and show north arrow.

SET SURVEY MARKER SIGN ON GATE POST 0.3' W'LY REFERENCE MEASUREMENTS (at least three vicinity references must be given below even if they appear on the above sketch):

Description	Bearing	Distance
CONC. MON. BY ROW FENCE	N 89°20'12" W	458.80'
DISK 0510 IN 10" PINE TREE	N 39°04'47" W	397.79'
CONC. MON. "JOHNSON"	N 07°46'43" W	292.05'
DISK 0509 IN GATE POST	N 02°04'19" W	15.18'
CIR LS2775 REF POINT	N 56°39'20" W	315.83'

SURVEYORS CERTIFICATE: I certify the monument and accessories indicated above were field located on JUNE 16, 1993.

[Signature] PLS 4260

UPDATED 1/26/95

SIGNATURE

1/30/95

DATE

CHARLOTTE COUNTY SURVEY DEPT.

FIRM OR AGENCY

7000 FLORIDA STREET

ADDRESS

PUNTA GORDA, CITY

FLA. STATE 33950



509

Completeness checked by: B. Berto
 Accepted and filed: 3-1-95 Date
 B.L.M. - I.D. 21161522 D.N.R. USE ONLY

SEND TO:

Department of Natural Resources
Bureau of Survey and Mapping
3900 Commonwealth Boulevard
Mail Station 105
Tallahassee, Florida 32399

DNR 53-001(16)
REV. 7/16/92
PAGE 2 OF 2