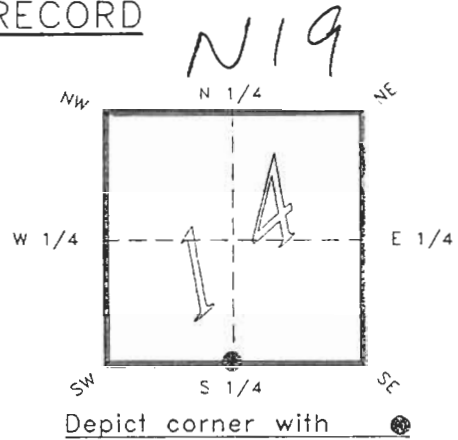


4123N19

FLORIDA DEPARTMENT OF ENVIRONMENTAL PROTECTION
CERTIFIED CORNER RECORD

CORNER DESCRIPTION:

S. 1/4 corner of Section 14 ,
Twp 41 S. , Rge 23 E. ,
Tallahassee Base Meridian,
CHARLOTTE County(s), Florida.



MONUMENTATION DESCRIPTION:

Describe original monument and accessories, or subsequent restoration. Give sources of information. (If no attempt was made to search for the original monument and accessories, this information is not necessary.)

Description of corner evidence found:
4"x4" CONCRETE MONUMENT

State method(s) to determine corner location (lost corners only):

HORIZONTAL POSITION INFORMATION (if determined):

Latitude 26°54'10.19508" N Longitude 81°58'52.40089" W
Y(Northing) 284638.337 m X(Easting) 201865.251 m Zone FLW
Convergence 0°00'30.587" Scale factor 0.99994122

Coordinate determination (circle one): Field traverse GPS

Horizontal datum (circle one): NAD27 NAD83(1986) NAD83(1990) other (explain)

Order of accuracy as defined in "Standards and Specifications for Geodetic Control Networks" published by the Federal Geodetic Control Committee (circle one):
1st, 2nd, 3rd, class 1 ,

or Minimum Technical Standards (Chapter 21HH-6, F.A.C.) ratio of closure for field data (example 1:10,000), _____ . This does not specify an order of accuracy.

Control point(s) used for survey: CHARLOTTE COUNTY HORIZONTAL CONTROL NETWORK INCLUDES HAVOLINE 2, PLACIDA 2, W260, PUNTPORT, & FLGPS 58 AS B ORDER STATIONS.

Comments:

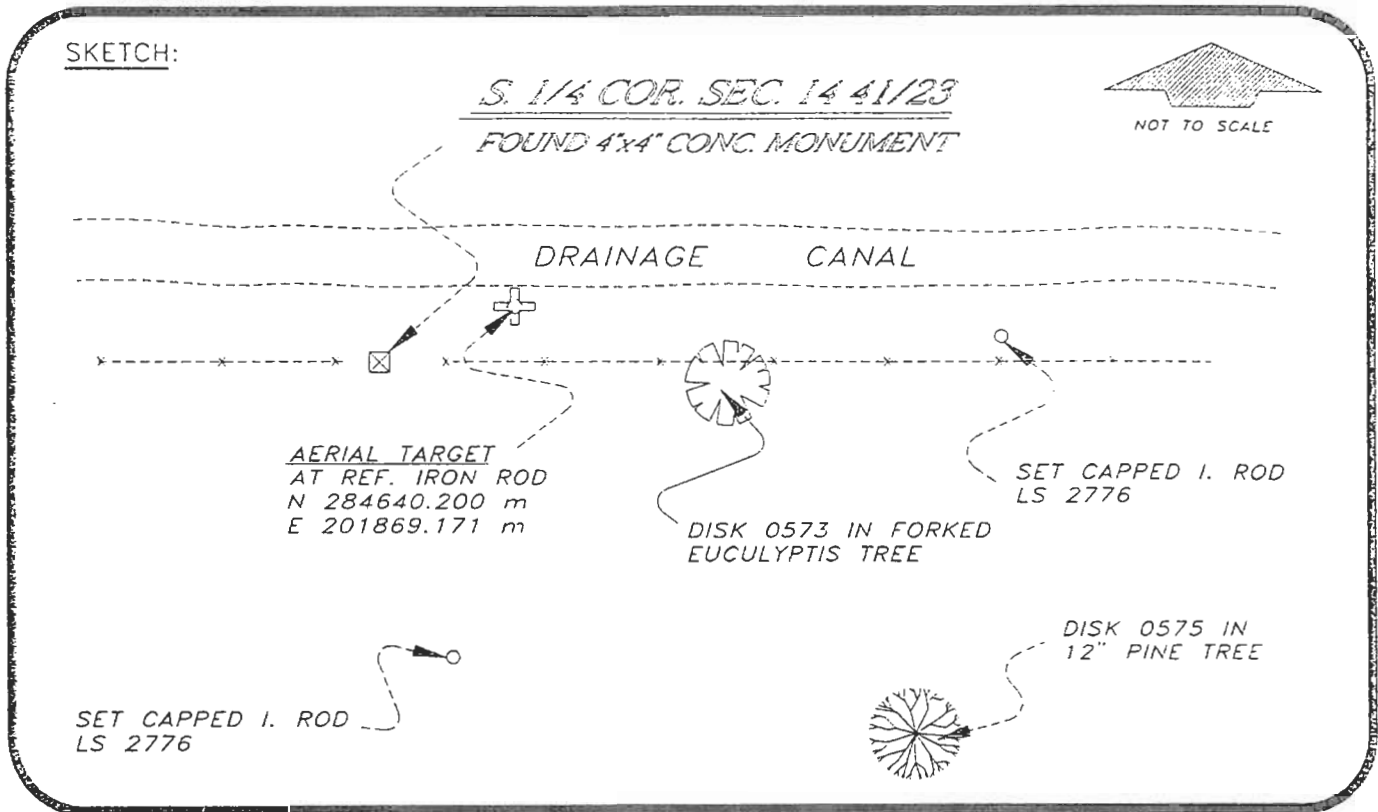
RECEIVED
JAN 31 1995
SURVEY & MAPPING

4123N19

DOC. #

050988

SKETCH:



BASIS OF BEARING SOLAR OBSERVATION

REFER: FB 303/28

REFERENCE MEASUREMENTS

Description	Bearing	Distance
DISK 0575 IN 12" PINE TREE	S 49°26'08" E	123.70'
DISK 0573 IN EUCALYPTIS	S 85°59'07" E	57.12'
CAPPED I. ROD LS 2776	S 12°54'03" E	45.72'
CAPPED I. ROD LS 2776	N 88°28'46" E	96.61'
AERIAL TARGET	N 64°34'21" E	14.24'

SURVEYORS CERTIFICATE: I certify the monument and accessories indicated above were field located on JANUARY 6, 19 94.

R. P. Ross
SIGNATURE

PLS 4260

UPDATED 1/26/95

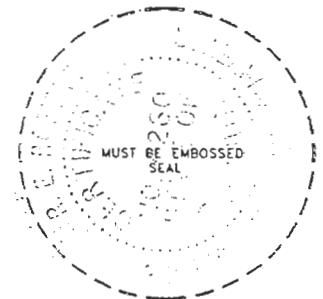
1/30/95
DATE

CHARLOTTE COUNTY SURVEY DEPT.

FIRM OR AGENCY

7000 FLORIDA STREET
ADDRESS

PUNTA GORDA, FLA. 33950
CITY STATE



SEND TO:

Department of Environmental Protection
Bureau of Survey and Mapping
3900 Commonwealth Boulevard
Mail Station 105
Tallahassee, Florida 32399

Completeness checked by: *B. Smith*
 Accepted and filed: 3-1-95
 B.L.M. - I.D. 23C00814 Date
 D.N.R. USE ONLY