

4123N21

DOC. #

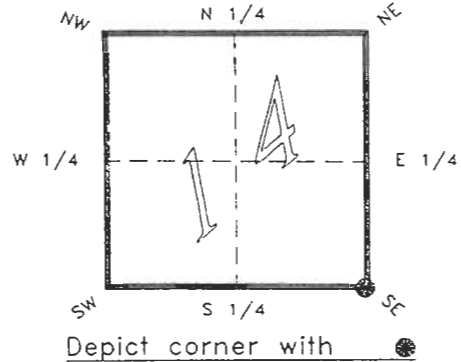
050989

FLORIDA DEPARTMENT OF ENVIRONMENTAL PROTECTION  
CERTIFIED CORNER RECORD

N 21

CORNER DESCRIPTION:

S.E. corner of Section 14,  
Twp 41 S., Rge 23 E.,  
Tallahassee Base Meridian,  
CHARLOTTE County(s), Florida.



MONUMENTATION DESCRIPTION:

Describe original monument and accessories, or subsequent restoration. Give sources of information. (If no attempt was made to search for the original monument and accessories, this information is not necessary.)

Description of corner evidence found:

CONCRETE MONUMENT

State method(s) to determine corner location (lost corners only):

RECEIVED  
JAN 31 1995  
SURVEY & MAPPING

HORIZONTAL POSITION INFORMATION ( if determined ):

Latitude 26°54'08.69608"N Longitude 81°58'23.30236"W  
Y(Northing) 284592.348 m X(Easting) 202668.172 m Zone FLW  
Convergence 0°00'43.753" Scale factor 0.99994126

Coordinate determination (circle one):

Field traverse

GPS

Horizontal datum (circle one): NAD27 NAD83(1986) NAD83(1990) other (explain)

Order of accuracy as defined in "Standards and Specifications for Geodetic Control Networks" published by the Federal Geodetic Control Committee (circle one):

1st, 2nd, 3rd, class 1

or Minimum Technical Standards (Chapter 21HH-6, F.A.C.) ratio of closure for field data (example 1:10,000), \_\_\_\_\_ . This does not specify an order of accuracy.

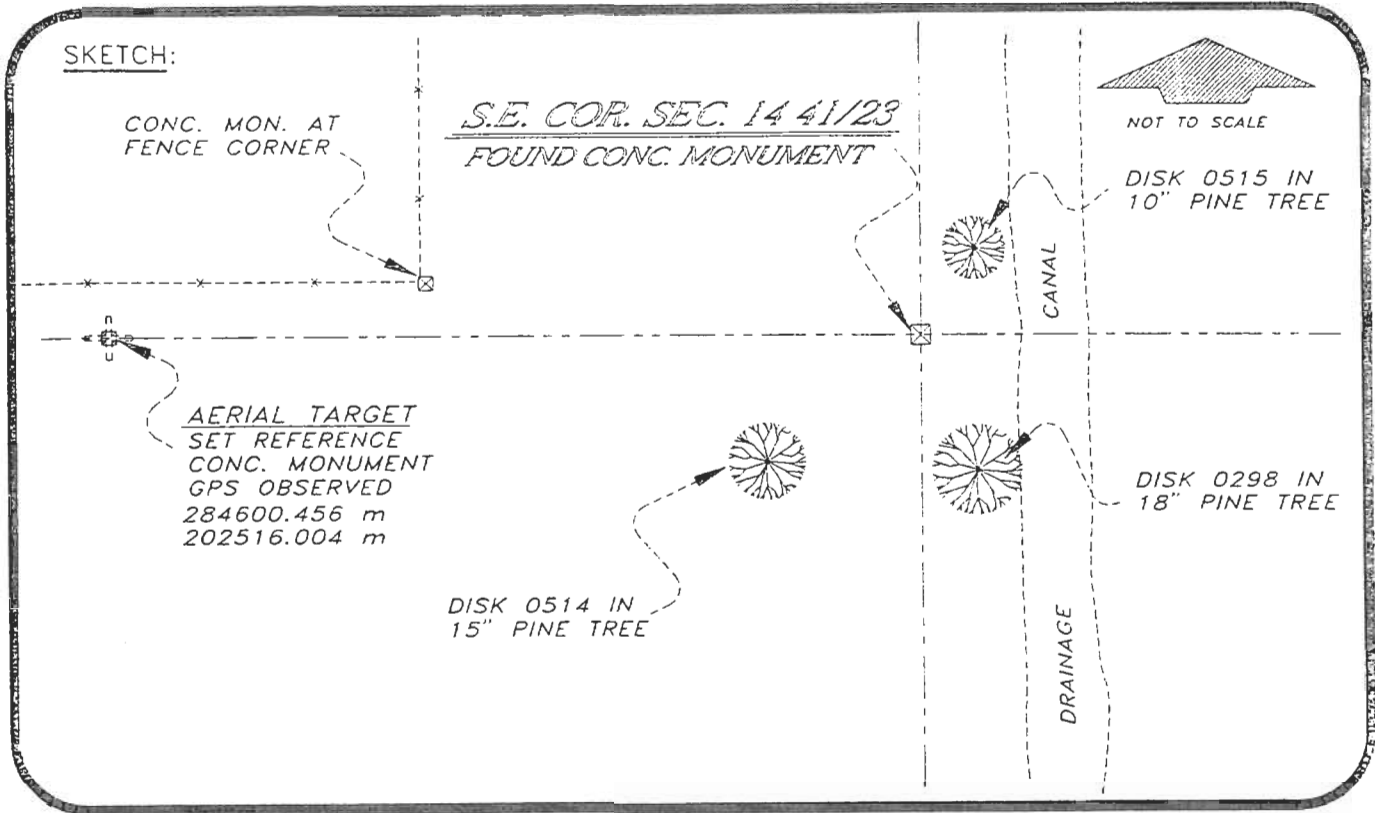
Control point(s) used for survey: CHARLOTTE COUNTY HORIZONTAL CONTROL NETWORK INCLUDES HAVOLINE 2, PLACIDA 2, W260, PUNTPORT, & FLGPS 58 AS B ORDER STATIONS.

Comments:

050989

4123N21

DOC. #



BASIS OF BEARING SOLAR OBSERVATION REFER: FB 283/80  
 SET SURVEY MARKER POST 3' E'LY

REFERENCE MEASUREMENTS

| Description            | Bearing                | Distance |
|------------------------|------------------------|----------|
| DISK 0515 IN 10" PINE  | N 16°09'12" E          | 25.62'   |
| DISK 0298 IN 18" PINE  | S 09°15'01" E          | 44.27'   |
| DISK 0514 IN 15" PINE  | S 50°40'47" W          | 58.56'   |
| CONC. MON. @ FENCE     | N 81°17'57" W          | 342.19'  |
| REF. MON. GPS OBSERVED | N 86°56'19" W          | 499.97'  |
|                        | ( N 86°57'00" W GRID ) |          |

SURVEYORS CERTIFICATE: I certify the monument and accessories indicated above were field located on OCTOBER 13, 19 93.

*[Signature]*

PLS 4260

UPDATED 1/24/95

SIGNATURE

*[Signature]*

DATE

CHARLOTTE COUNTY SURVEY DEPT.

FIRM OR AGENCY

7000 FLORIDA STREET

ADDRESS

PUNTA GORDA,

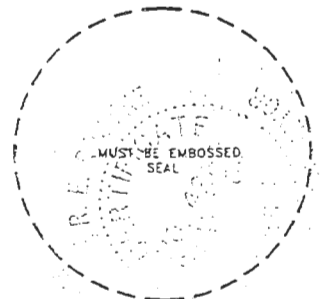
FLA.

33950

CITY

STATE

508



Completeness checked by: *[Signature]*  
 Accepted and filed: *[Signature]*  
 B.L.M. - I.D. 23141324 Date 3-1-95  
 P.N.R. USE ONLY

SEND TO:

Department of Environmental Protection  
 Bureau of Survey and Mapping  
 3900 Commonwealth Boulevard  
 Mail Station 105  
 Tallahassee, Florida 32399