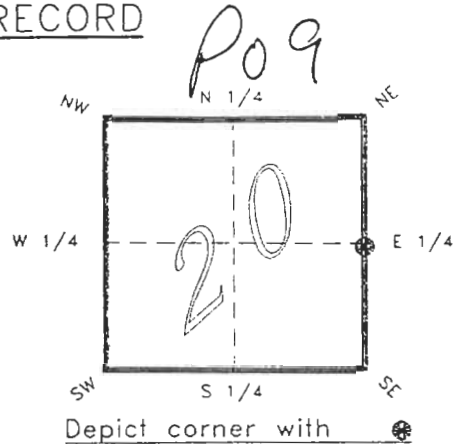


4123P09

FLORIDA DEPARTMENT OF ENVIRONMENTAL PROTECTION
CERTIFIED CORNER RECORD

CORNER DESCRIPTION:

E. 1/4 corner of Section 20 ,
Twp 41 S. , Rge 23 E. ,
Tallahassee Base Meridian,
CHARLOTTE County(s), Florida.



MONUMENTATION DESCRIPTION:

Describe original monument and accessories, or subsequent restoration. Give sources of information. (If no attempt was made to search for the original monument and accessories, this information is not necessary.)

Description of corner evidence found:

CARRIAGE BOLT

State method(s) to determine corner location (lost corners only):

HORIZONTAL POSITION INFORMATION (if determined):

Latitude 26°53'42.26002" N Longitude 82°01'23.39783" W
Y(Northing) 283778.666 m X(Easting) 197698.660 m Zone FLW
Convergence -0°00'37.726" Scale factor 0.99994124

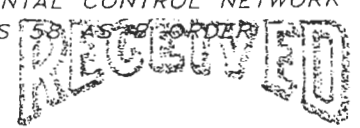
Coordinate determination (circle one): Field traverse GPS
Horizontal datum (circle one): NAD27 NAD83(1986) NAD83(1990) other (explain)

Order of accuracy as defined in "Standards and Specifications for Geodetic Control Networks" published by the Federal Geodetic Control Committee (circle one):
1st, 2nd, 3rd, class 1 ,

or Minimum Technical Standards (Chapter 21HH-6, F.A.C.) ratio of closure for field data (example 1:10,000), _____ . This does not specify an order of accuracy.

Control point(s) used for survey: CHARLOTTE COUNTY HORIZONTAL CONTROL NETWORK INCLUDES HAYOLINE 2, PLACIDA 2, W260, PUNTAPORT, & FLGPS STATIONS.

Comments:



FEB 20 1995

4123P09

DOC. #

050993

SKETCH:



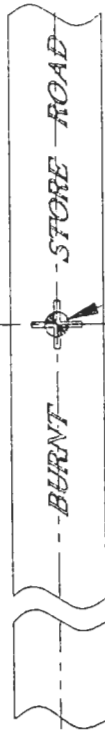
DISK 0537 IN TELE. POLE

E. 1/4 COR. SEC. 20 41/23

FOUND CARRIAGE BOLT AERIAL TARGET

DISK 0536 IN TELE. POLE

DISK 0538 IN POWER POLE



BASIS OF BEARING SOLAR OBSERVATION

REFER: FB 303/03

REFERENCE MEASUREMENTS

Description	Bearing	Distance
DISK 0536 IN TELE. POLE	S 14°52'29" W	98.51'
DISK 0537 IN TELE. POLE	N 17°43'42" W	77.51'
DISK 0538 IN POWER POLE	S 08°34'18" E	182.80"

SURVEYORS CERTIFICATE: I certify the monument and accessories indicated above were field located on NOVEMBER 2, 19 93.

R. Rose

PLS 4260

UPDATED 1/30/95

SIGNATURE

2-15-95

DATE

CHARLOTTE COUNTY SURVEY DEPT.

FIRM OR AGENCY

7000 FLORIDA STREET

ADDRESS

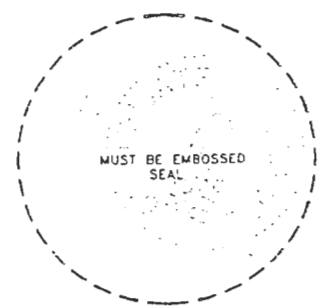
PUNTA GORDA,

CITY

FLA.

STATE

33950



509

Completeness checked by: *B. Benton*

Accepted and filed: 3-1-95

Date

B.L.M. - I.D. 2000 CL21

D.N.R. USE ONLY

SEND TO:

Department of Environmental Protection
Bureau of Survey and Mapping
3900 Commonwealth Boulevard
Mail Station 105
Tallahassee, Florida 32399