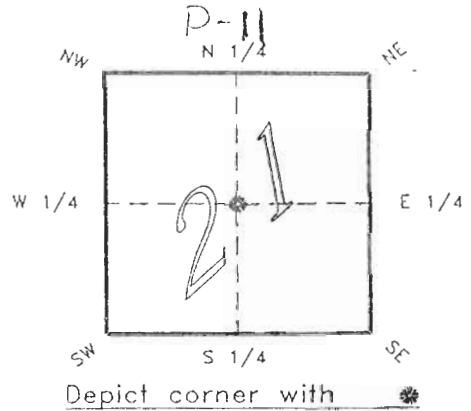


4123P11

FLORIDA DEPARTMENT OF ENVIRONMENTAL PROTECTION
CERTIFIED CORNER RECORD

CORNER DESCRIPTION:

CENTER corner of Section 21 ,
Twp 41 S. , Rge 23 E. ,
Tallahassee Base Meridian,
CHARLOTTE County(s), Florida.



MONUMENTATION DESCRIPTION:

Describe original monument and accessories, or subsequent restoration. Give sources of information. (If no attempt was made to search for the original monument and accessories, this information is not necessary.)

Description of corner evidence found:

IRON ROD

State method(s) to determine corner location (lost corners only):

HORIZONTAL POSITION INFORMATION (if determined):

Latitude 26°53'41.83364" N Longitude 82°00'52.24667"

Y(Northing) 283765.416 m X(Easting) 198558.266 m Zone FLW

Convergence -0°00'23.634" Scale factor 0.99994120

Coordinate determination (circle one): Field traverse GPS

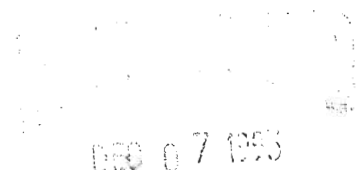
Horizontal datum (circle one): NAD27 NAD83(1986) NAD83(1990) other (explain)

Order of accuracy as defined in "Standards and Specifications for Geodetic Control Networks" published by the Federal Geodetic Control Committee (circle one):
1st, 2nd, 3rd, class 1 ,

or Minimum Technical Standards (Chapter 21HH-6, F.A.C.) ratio of closure for field data (example 1:10,000), _____ . This does not specify an order of accuracy.

Control point(s) used for survey: CHARLOTTE COUNTY HORIZONTAL CONTROL NETWORK INCLUDES HAVOLINE 2, PLACIDA 2, W260, PUNTAPOINT, & FLGPS 58 AS B ORDER STATIONS.

Comments:

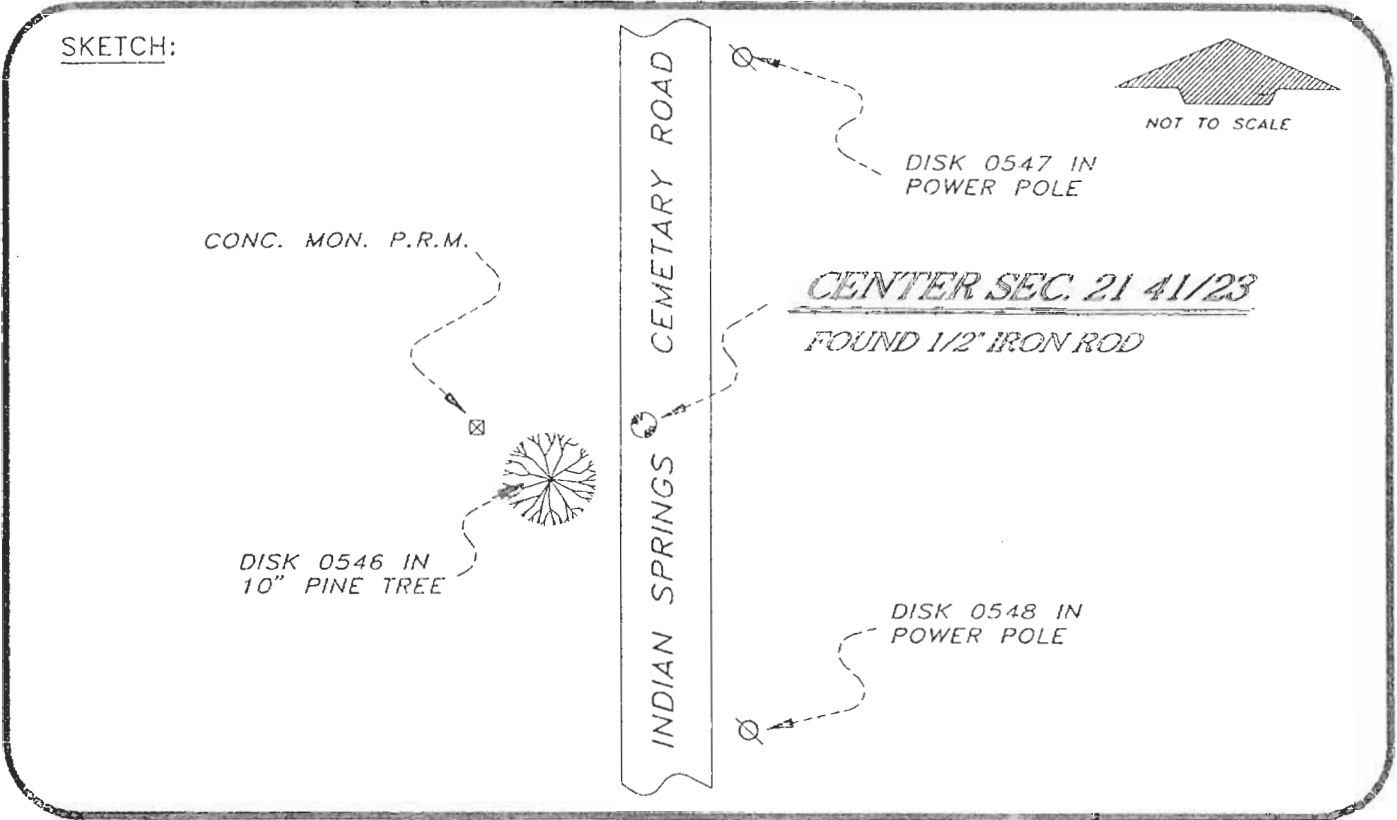

DEC 07 1993

4123P11

DOC. #

0047281

SKETCH:



BASIS OF BEARING SOLAR OBSERVATION

REFER FB 303/09

REFERENCE MEASUREMENTS

Description	Bearing	Distance
DISK 0546 IN 10" PINE TREE	S 64°28'20.5" W	22.26'
DISK 0547 IN POWER POLE	N 05°53'35" E	226.57'
DISK 0548 IN POWER POLE	S 07°06'11" E	166.70'
CONC. MON. "P.R.M."	S 89°48'43" W	29.90'

SURVEYORS CERTIFICATE: I certify the monument and accessories indicated above were field located on NOVEMBER 4, 19 93.

R. Rose

PLS 4260

SIGNATURE

12-3-93

DATE

CHARLOTTE COUNTY SURVEY DEPT.

FIRM OR AGENCY

7000 FLORIDA STREET

ADDRESS

PUNTA GORDA

FLA.

33950

CITY

STATE

509



Completeness checked by: C. Curran

Accepted and filed: 1-3-94

Date

B.L.M. - I.D. 21CLCL21 D.N.R. USE ONLY

SEND TO:

Department of Environmental Protection
Bureau of Survey and Mapping
3900 Commonwealth Boulevard
Mail Station 105
Tallahassee, Florida 32399