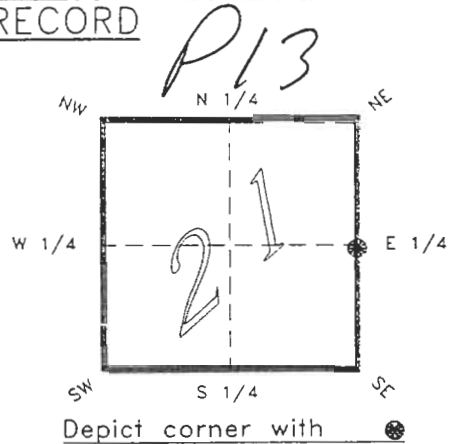


4123P13

FLORIDA DEPARTMENT OF ENVIRONMENTAL PROTECTION  
CERTIFIED CORNER RECORD

CORNER DESCRIPTION:

E. 1/4 corner of Section 21 ,  
Twp 41 S. , Rge 23 E. ,  
Tallahassee Base Meridian,  
CHARLOTTE County(s), Florida.

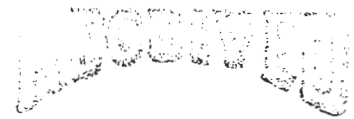


MONUMENTATION DESCRIPTION:

Describe original monument and accessories, or subsequent restoration. Give sources of information. (If no attempt was made to search for the original monument and accessories, this information is not necessary.)

Description of corner evidence found:

80d SPIKE WITH DISK PLS #3760



JAN 31 1995

State method(s) to determine corner location (lost corners only):

SURVEY & MAPPING

HORIZONTAL POSITION INFORMATION ( if determined ):

Latitude 26°53'41.13046" N Longitude 82°00'21.32544" W  
Y(Northing) 283743.705 m X(Easting) 199411.529 m Zone FLW  
Convergence -0°00'09.647" Scale factor 0.99994118

Coordinate determination (circle one): Field traverse (GPS)

Horizontal datum (circle one): NAD27 NAD83(1986) (NAD83(1990)) other (explain)

Order of accuracy as defined in "Standards and Specifications for Geodetic Control Networks" published by the Federal Geodetic Control Committee (circle one): 1st, (2nd), 3rd, class 1 ,

or Minimum Technical Standards (Chapter 21HH-6, F.A.C.) ratio of closure for field data (example 1:10,000), . This does not specify an order of accuracy.

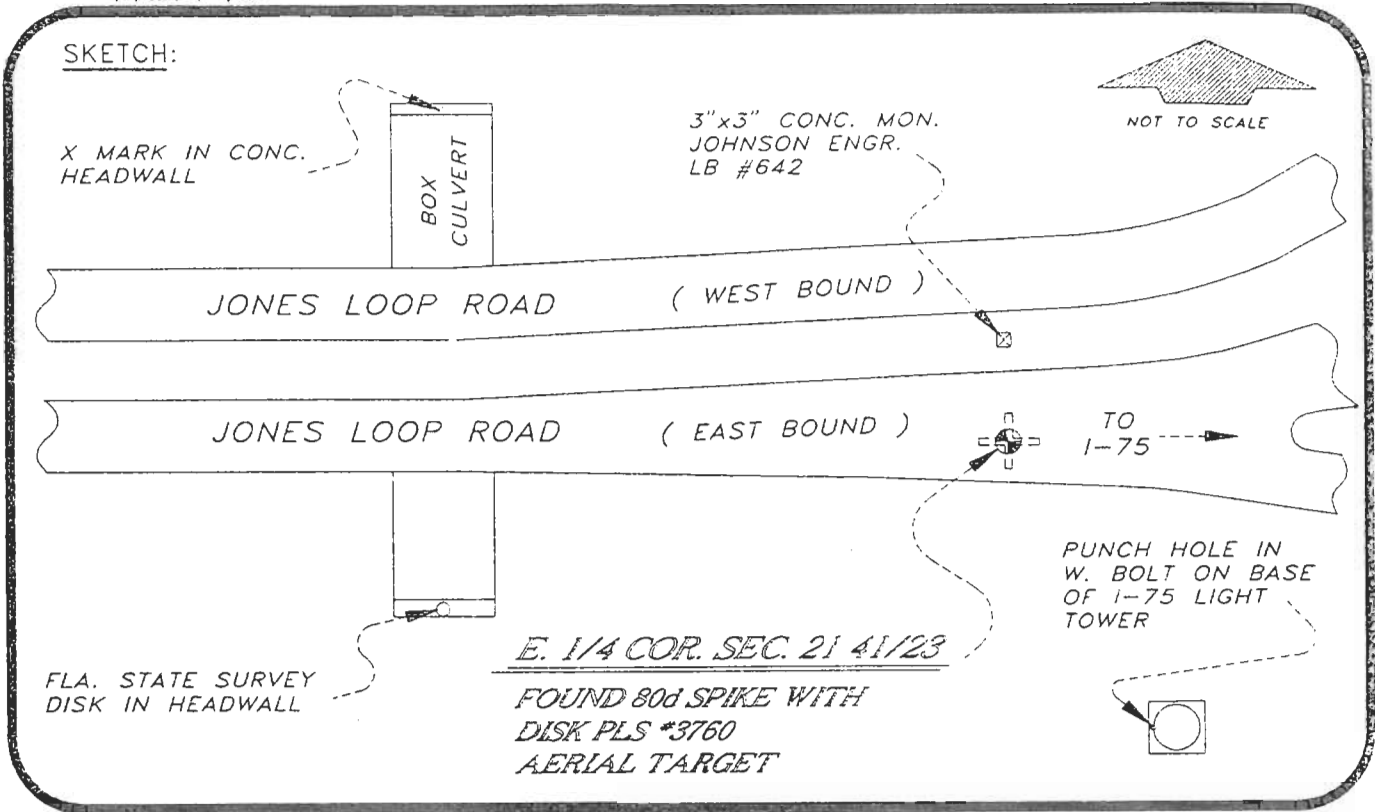
Control point(s) used for survey: CHARLOTTE COUNTY HORIZONTAL CONTROL NETWORK INCLUDES HAVOLINE 2, PLACIDA 2, W260, PUNTPORT, & FLGPS 58 AS B ORDER STATIONS.

Comments:

050997

4123P13

DOC. #



BASIS OF BEARING SOLAR OBSERVATION

REFER: FB 303/19

REFERENCE MEASUREMENTS

Description	Bearing	Distance
CONC. MON. LB #642	N 00°20'56" W	30.43'
X IN CONC. HEADWALL	N 57°07'06" W	202.66'
DISK IN CONC. HEADWALL	S 74°42'13" W	172.34'
PUNCH HOLE IN W. BOLT	S 34°47'04" E	93.01'

SURVEYORS CERTIFICATE: I certify the monument and accessories indicated above were field located on NOVEMBER 17, 19 93.

*R. P. Ross*

PLS 4260

UPDATED 1/24/95

SIGNATURE

1/30/95

DATE

CHARLOTTE COUNTY SURVEY DEPT.

FIRM OR AGENCY

7000 FLORIDA STREET

ADDRESS

PUNTA GORDA,

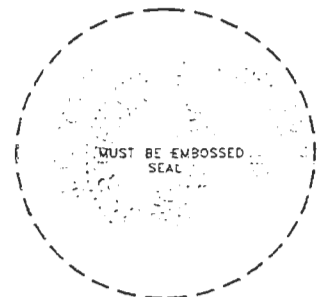
FLA.

33950

CITY

STATE

509



SEND TO:

Department of Environmental Protection  
Bureau of Survey and Mapping  
3900 Commonwealth Boulevard  
Mail Station 105  
Tallahassee, Florida 32399

Completeness checked by: *B. Linto*

Accepted and filed: *3-1-95* Date

B.L.M. - I.D. *2100CL22* D.N.R. USE ONLY