

4123Q23

FLORIDA DEPARTMENT OF NATURAL RESOURCES
CERTIFIED CORNER RECORD

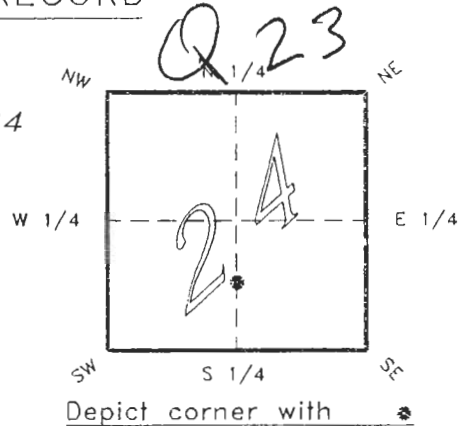
CORNER DESCRIPTION:

N.E. COR. SE. 1/4, S.W. 1/4 SEC. 24

Twp 41 S., Rge 22 E.,

Tallahassee Base Meridian,

CHARLOTTE County(s), Florida.



MONUMENTATION DESCRIPTION:

Describe original monument and accessories, or subsequent restoration. Give sources of information. (If no attempt was made to search for the original monument and accessories, this information is not necessary.)

Description of corner evidence found:

SET PK NAIL IN SEAWALL CAP BY SUBDIVISION PLAY DATA 4 1993 AND EXISTING SUBDIVISION CORNERS.

State method(s) to determine corner location (lost corners only): SURVEY & MAPPING

HORIZONTAL POSITION INFORMATION (if determined):

Latitude 26°53'29.65022" Longitude 82°03'46.25541"

Y(Northing) 283391.919 M X(Easting) 193756.351 M Zone FLW

Convergence -0°01'42.336" Scale factor 0.99994166

Coordinate determination (circle one): Field traverse GPS

Horizontal datum (circle one): NAD27 NAD83(1986) NAD83(1990) other (explain)

Order of accuracy as defined in "Standards and Specifications for Geodetic Control Networks" published by the Federal Geodetic Control Committee (circle one): 1st, 2nd, 3rd, class 1

or Minimum Technical Standards (Chapter 21HH-6, F.A.C.) ratio of closure for field data (example 1:10,000), . This does not specify an order of accuracy.

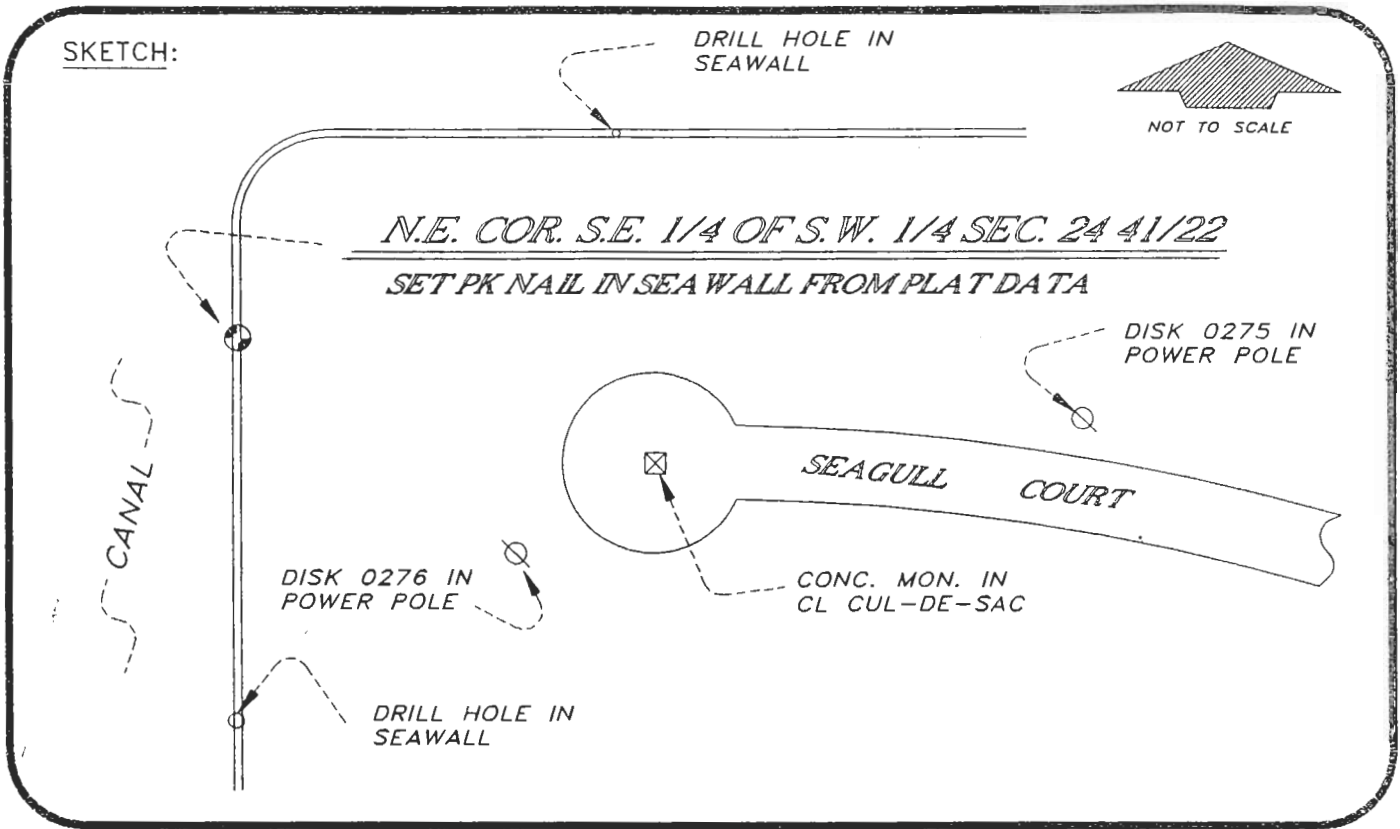
Control point(s) used for survey: CHARLOTTE COUNTY HORIZONTAL CONTROL NETWORK INCLUDES HAVOLINE 2, PLACIDA 2, W260, PUNTAPORT, & FLGPS 58 AS B ORDER STATIONS.

Comments:

0046795

4123Q23

DOC. #



BASIS OF BEARING SOLAR OBSERVATION REFER FB 298/27

All bearings and distances must be from the corner to the witness. Indicate whether corner was found, set, or replaced and show north arrow.

REFERENCE MEASUREMENTS (at least three vicinity references must be given below even if they appear on the above sketch):

Description	Bearing	Distance
DRILL HOLE IN SEAWALL	N 48°58'06" E	159.70'
DISK 0275 IN POWER POLE	N 86°42'58" E	302.99'
DRILL HOLE IN SEAWALL	S 00°26'07" W	109.22'
DISK 0276 IN POWER POLE	S 62°32'38" E	125.43'
CONC. MON. IN CUL-DE-SAC	S 75°46'42" E	164.78'

SURVEYORS CERTIFICATE: I certify the monument and accessories indicated above were field located on JULY 8, 19 93.

[Signature] PLS 4260
SIGNATURE

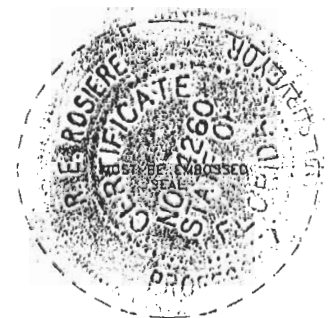
9-29-93
DATE

CHARLOTTE COUNTY SURVEY DEPT.
FIRM OR AGENCY

7000 FLORIDA STREET
ADDRESS

PUNTA GORDA, FLA. 33950
CITY STATE

509



Completeness checked by: B. Benton
 Accepted and filed: 11-1-93 Date
 B.L.M. - I.D. 24CS9924 D.N.R. USE ONLY

SEND TO:

Department of Natural Resources
Bureau of Survey and Mapping
3900 Commonwealth Boulevard
Mail Station 105
Tallahassee, Florida 32399

DNR 53-001(16)
REV. 7/16/92
PAGE 2 OF 2