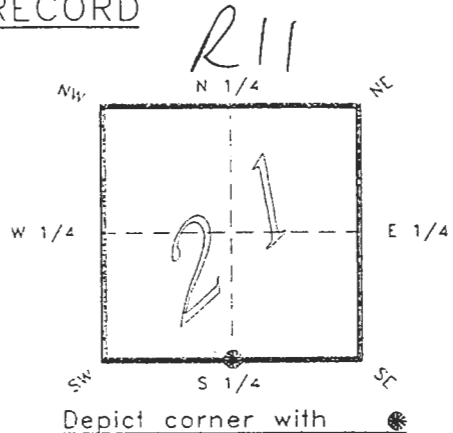


4123R11

FLORIDA DEPARTMENT OF ENVIRONMENTAL PROTECTION
CERTIFIED CORNER RECORD

CORNER DESCRIPTION:

S. 1/4 corner of Section 21 ,
Twp 41 S. , Rge 23 E. ,
Tallahassee Base Meridian,
CHARLOTTE County(s). Florida.



MONUMENTATION DESCRIPTION:

Describe original monument and accessories, or subsequent restoration. Give sources of information. (If no attempt was made to search for the original monument and accessories, this information is not necessary.)

Description of corner evidence found:

CONCRETE MONUMENT

RECORDED
JAN 31 1995
SURVEY & MAPPING

State method(s) to determine corner location (lost corners only):

HORIZONTAL POSITION INFORMATION (if determined):

Latitude 26°53'16.17897" N Longitude 82°00'52.50020" W
Y(Northing) 282975.856 m X(Easting) 198551.179 m Zone FLW
Convergence -0°00'23.743" Scale factor 0.99994120

Coordinate determination (circle one): Field traverse GPS

Horizontal datum (circle one): NAD27 NAD83(1986) NAD83(1990) other (explain)

Order of accuracy as defined in "Standards and Specifications for Geodetic Control Networks" published by the Federal Geodetic Control Committee (circle one):

1st, 2nd, 3rd, class 1

or Minimum Technical Standards (Chapter 21HH-6, F.A.C.) ratio of closure for field data (example 1:10,000). This does not specify an order of accuracy.

Control point(s) used for survey: CHARLOTTE COUNTY HORIZONTAL CONTROL NETWORK INCLUDES HAVOLINE 2, PLACIDA 2, W260, PUNTAPOINT, & FLGPS 58 AS B ORDER STATIONS.

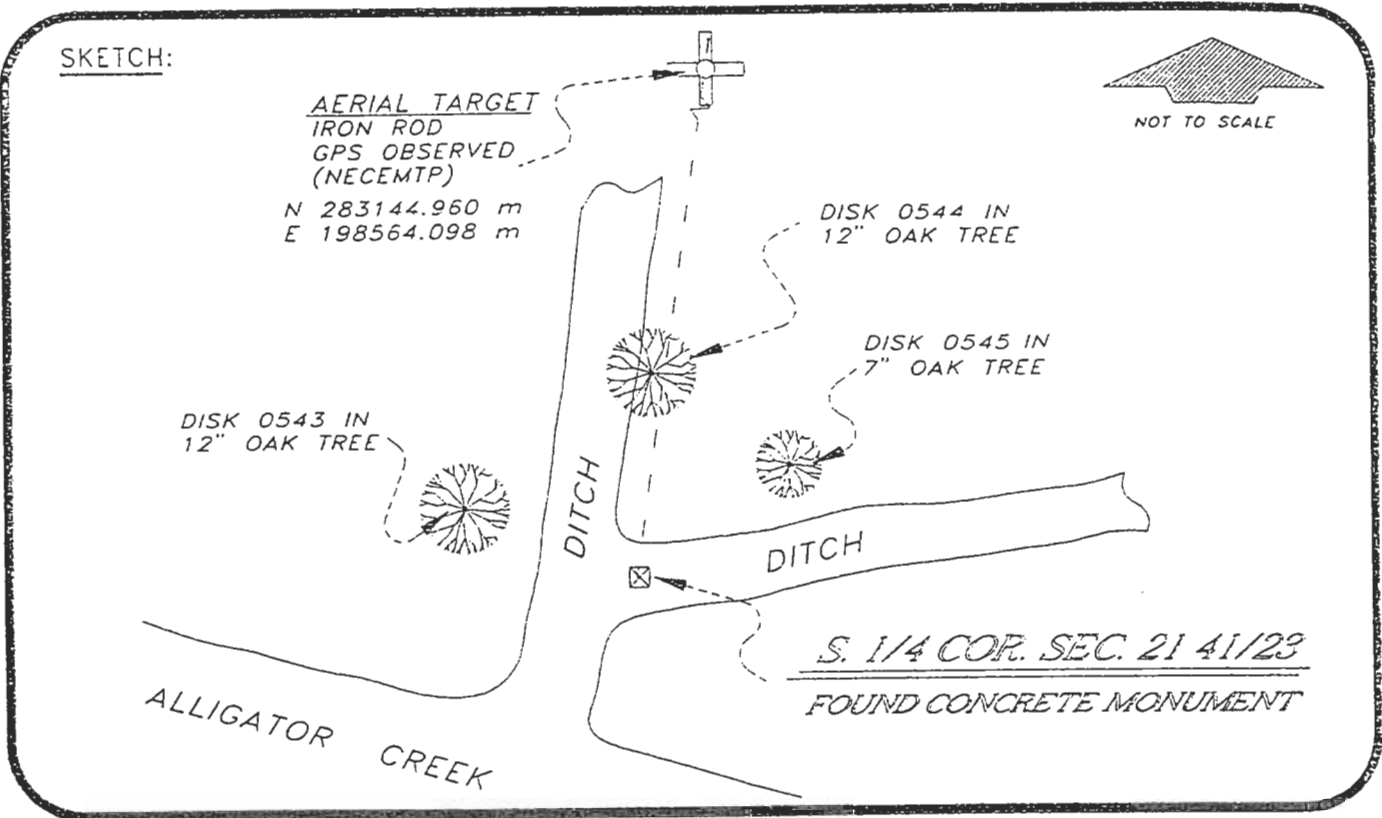
Comments:

4123R11

DOC. #

050998

SKETCH:



BASIS OF BEARING SOLAR OBSERVATION REFER: FB 303/07

REFERENCE MEASUREMENTS

| Description | Bearing | Distance |
|---------------------------|------------------------|----------|
| DISK 0543 IN 12" OAK TREE | N 53°35'38" W | 17.69' |
| DISK 0545 IN 7" OAK TREE | N 58°01'29" E | 22.97' |
| DISK 0544 IN 12" OAK TREE | N 03°34'20" E | 24.03' |
| IRON ROD (NECEMTP) | N 04°21'43" E | 556.45' |
| | N 04°22'07" E (GRID) | |

SURVEYORS CERTIFICATE: I certify the monument and accessories indicated above were field located on NOVEMBER 2, 19 93.

R. Rose
SIGNATURE

PLS 4260

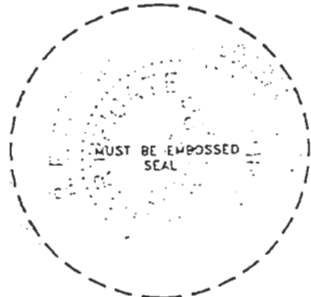
UPDATE 1/24/95

1/30/95
DATE

CHARLOTTE COUNTY SURVEY DEPT.

7000 FLORIDA STREET
ADDRESS

PUNTA GORDA, FLA. 33950
CITY STATE



509

Completeness checked by: B. Lenta
 Accepted and filed: 3-6-95 Date
 B.L.M. - I.D. 28C0004 D.M.R. USE ONLY

SEND TO:
Department of Environmental Protection
Bureau of Survey and Mapping
3900 Commonwealth Boulevard
Mail Station 105
Tallahassee, Florida 32399