

4123R13

DOC. #

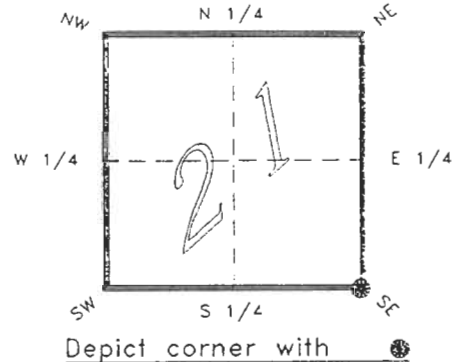
050999

FLORIDA DEPARTMENT OF ENVIRONMENTAL PROTECTION
CERTIFIED CORNER RECORD

R13

CORNER DESCRIPTION:

S.E. corner of Section 21 ,
Twp 41 S. , Rge 23 E. ,
Tallahassee Base Meridian,
CHARLOTTE County(s), Florida.



MONUMENTATION DESCRIPTION:

Describe original monument and accessories, or subsequent restoration. Give sources of information. (If no attempt was made to search for the original monument and accessories, this information is not necessary.)

Description of corner evidence found:

RAILROAD SPIKE

State method(s) to determine corner location (lost corners only):

HORIZONTAL POSITION INFORMATION (if determined):

Latitude 26°53'15.49775" N Longitude 82°00'21.36675" W
Y(Northing) 282954.821 m X(Easting) 199410.352 m Zone FLW
Convergence -0°00'09".663" Scale factor 0.99994118

Coordinate determination (circle one): Field traverse GPS

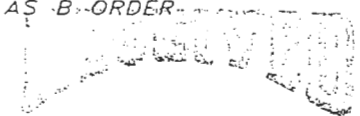
Horizontal datum (circle one): NAD27 NAD83(1986) NAD83(1990) other (explain)

Order of accuracy as defined in "Standards and Specifications for Geodetic Control Networks" published by the Federal Geodetic Control Committee (circle one):
1st, 2nd, 3rd, class 1 ,

or Minimum Technical Standards (Chapter 21HH-6, F.A.C.) ratio of closure for field data (example 1:10,000), _____ . This does not specify an order of accuracy.

Control point(s) used for survey: CHARLOTTE COUNTY HORIZONTAL CONTROL NETWORK INCLUDES HAVOLINE 2, PLACIDA 2, W260, PUNTAPORT, & FLGPS 58 AS B-ORDER STATIONS.

Comments:



JAN 31 1995

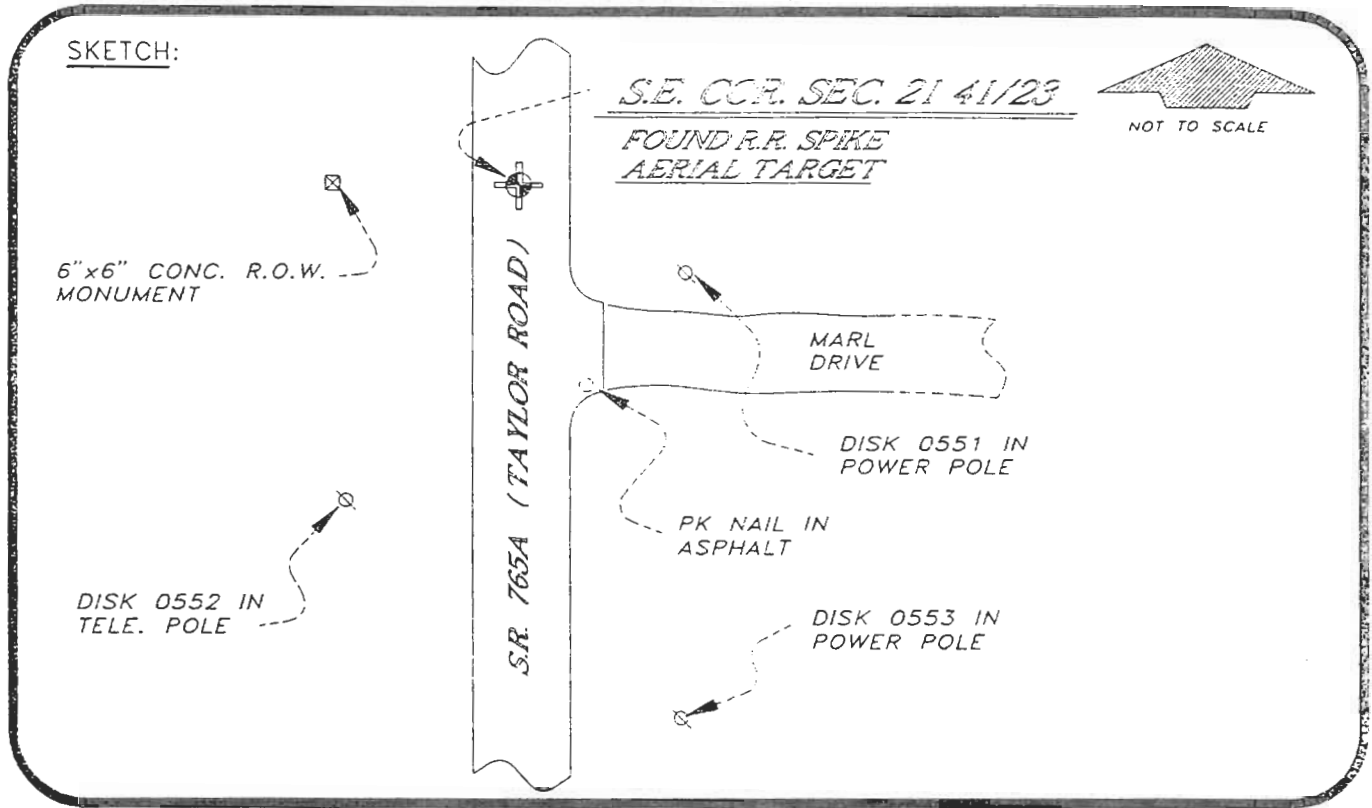
SURVEY & MAPPING

050999

4123R13

DOC. #

SKETCH:



BASIS OF BEARING SOLAR OBSERVATION

REFER: FB 303/13

REFERENCE MEASUREMENTS

Description	Bearing	Distance
CONC. R.O.W. MONUMENT	S 88°48'00" W	40.15'
PK NAIL IN ASPHALT	S 18°34'37" E	49.46'
DISK 0551 IN P. POLE	S 57°09'25" E	41.98'
DISK 0553 IN P. POLE	S 11°20'52" E	172.17'
DISK 0552 IN T. POLE	S 20°52'28" W	102.57'

SURVEYORS CERTIFICATE: I certify the monument and accessories indicated above were field located on NOVEMBER 15, 19 93.

R. Rose

PLS 4260

UPDATED 1/23/95

SIGNATURE

1/30/95

DATE

CHARLOTTE COUNTY SURVEY DEPT.

FIRM OR AGENCY

7000 FLORIDA STREET

ADDRESS

PUNTA GORDA,

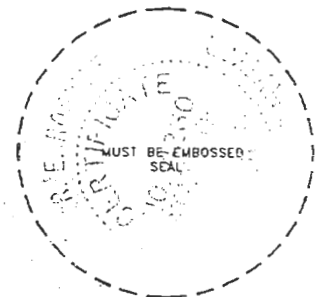
CITY

FLA.

STATE

33950

509



Completeness checked by:

Robert
3-1-95

Accepted and filed:

B.L.M. - I.D.

2821227

Date

D.N.R. USE ONLY

SEND TO:

Department of Environmental Protection
Bureau of Survey and Mapping
3900 Commonwealth Boulevard
Mail Station 105
Tallahassee, Florida 32399