

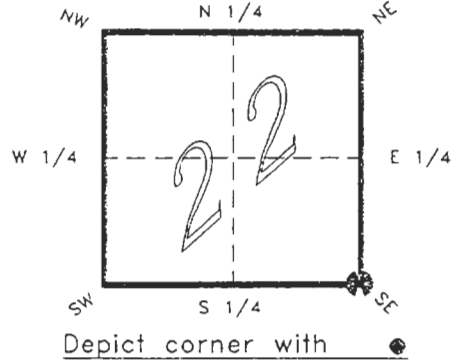
4123R17

FLORIDA DEPARTMENT OF NATURAL RESOURCES
CERTIFIED CORNER RECORD

R17

CORNER DESCRIPTION:

S.E. corner of Section 22 ,
Twp 41 S. , Rge 23 E. ,
Tallahassee Base Meridian,
CHARLOTTE County(s), Florida.



MONUMENTATION DESCRIPTION:

Describe original monument and accessories, or subsequent restoration. Give sources of information. (If no attempt was made to search for the original monument and accessories, this information is not necessary.)

Description of corner evidence found:

CONCRETE MONUMENT TRIANGULAR "TCE"
1.2' WEST OF FENCE CORNER

State method(s) to determine corner location (lost corners only):

RECORDED
JAN 31 1995
SURVEY & MAPPING

HORIZONTAL POSITION INFORMATION (if determined):

Latitude 26°53'18.97364" N Longitude 81°59'21.44208" W
Y(Northing) 283061.828 m X(Easting) 201064.056 m Zone FLW
Convergence 0°00'17.438" Scale factor 0.99994119

Coordinate determination (circle one): Field traverse GPS

Horizontal datum (circle one): NAD27 NAD83(1986) NAD83(1990) other (explain)

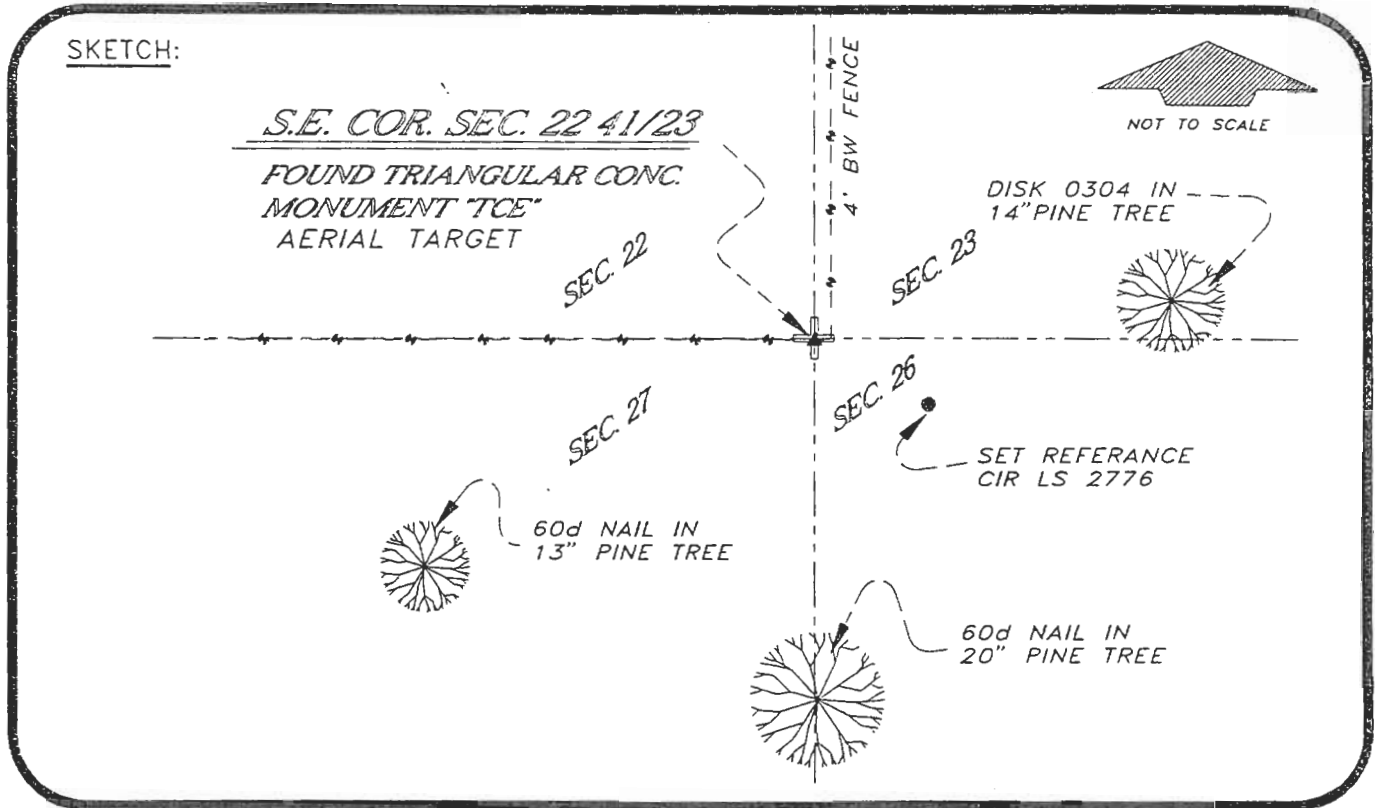
Order of accuracy as defined in "Standards and Specifications for Geodetic Control Networks" published by the Federal Geodetic Control Committee (circle one):
1st, 2nd, 3rd, class 1 ,

or Minimum Technical Standards (Chapter 21HH-6, F.A.C.) ratio of closure for field data (example 1:10,000), _____ . This does not specify an order of accuracy.

Control point(s) used for survey: CHARLOTTE COUNTY HORIZONTAL CONTROL NETWORK INCLUDES HAVOLINE 2, PLACIDA 2, W260, PUNTAPORT, & FLGPS 58 AS B ORDER STATIONS.

Comments:

SKETCH:



BASIS OF BEARING SOLAR OBSERVATION REFER FB 283/60

All bearings and distances must be from the corner to the witness. Indicate whether corner was found, set, or replaced and show north arrow.

SET SURVEY MARKER POST 3'W'LY

REFERENCE MEASUREMENTS (at least three vicinity references must be given below even if they appear on the above sketch):

Description	Bearing	Distance
60d NAIL IN 13" PINE TREE	S 63°38'30" W	105.19'
DISK 0304 IN 14" PINE TREE	N 82°16'54" E	47.35'
60d NAIL IN 20" PINE TREE	S 00°54'32" E	88.26"
SET REF. CIR LS 2776	S 69°38'48" E	12.44'

SURVEYORS CERTIFICATE: I certify the monument and accessories indicated above were field located on JUNE 17, 19 93.

UPDATED 1/24/95

[Signature] PLS 4260
SIGNATURE

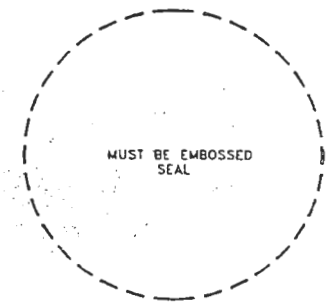
1/30/95
DATE

CHARLOTTE COUNTY SURVEY DEPT.
FIRM OR AGENCY

7000 FLORIDA STREET
ADDRESS

PUNTA GORDA, FLA. 33950
CITY STATE

508



MUST BE EMBOSSED SEAL

Completeness checked by: [Signature]
Accepted and filed: 3-12-95 Date
B.L.M. - I.D. 27222326 D.N.R. USE ONLY

SEND TO:

Department of Natural Resources
Bureau of Survey and Mapping
3900 Commonwealth Boulevard
Mail Station 105
Tallahassee, Florida 32399

DNR 53-001(16)
REV. 7/16/92
PAGE 2 OF 2