

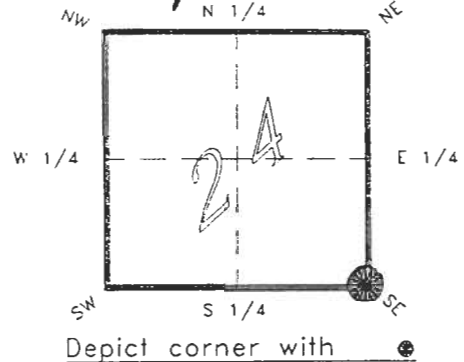
4123R25

FLORIDA DEPARTMENT OF NATURAL RESOURCES
CERTIFIED CORNER RECORD

R25

CORNER DESCRIPTION:

S.E. corner of Section 24 ,
Twp 41 S. , Rge 23 E ,
Tallahassee Base Meridian,
CHARLOTTE County(s), Florida.



MONUMENTATION DESCRIPTION:

Describe original monument and accessories, or subsequent restoration. Give sources of information. (If no attempt was made to search for the original monument and accessories, this information is not necessary.)

Description of corner evidence found:

CONCRETE MONUMENT

State method(s) to determine corner location (lost corners only):

HORIZONTAL POSITION INFORMATION (if determined):

Latitude 26°53'15.30360" N Longitude 81°57'25.93670" W
Y(Northing) 282949.550 m X(Easting) 204251.615 m Zone FLW.
Convergence 0°01'09.674" Scale factor 0.99994140

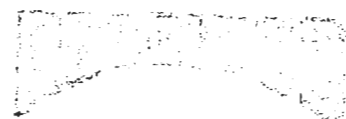
Coordinate determination (circle one): Field traverse GPS
Horizontal datum (circle one): NAD27 NAD83(1986) NAD83(1990) other (explain)

Order of accuracy as defined in "Standards and Specifications for Geodetic Control Networks" published by the Federal Geodetic Control Committee (circle one):
1st, 2nd, 3rd, class 1 ,

or Minimum Technical Standards (Chapter 21HH-6, F.A.C.) ratio of closure for field data (example 1:10,000), _____ . This does not specify an order of accuracy.

Control point(s) used for survey:

Comments:



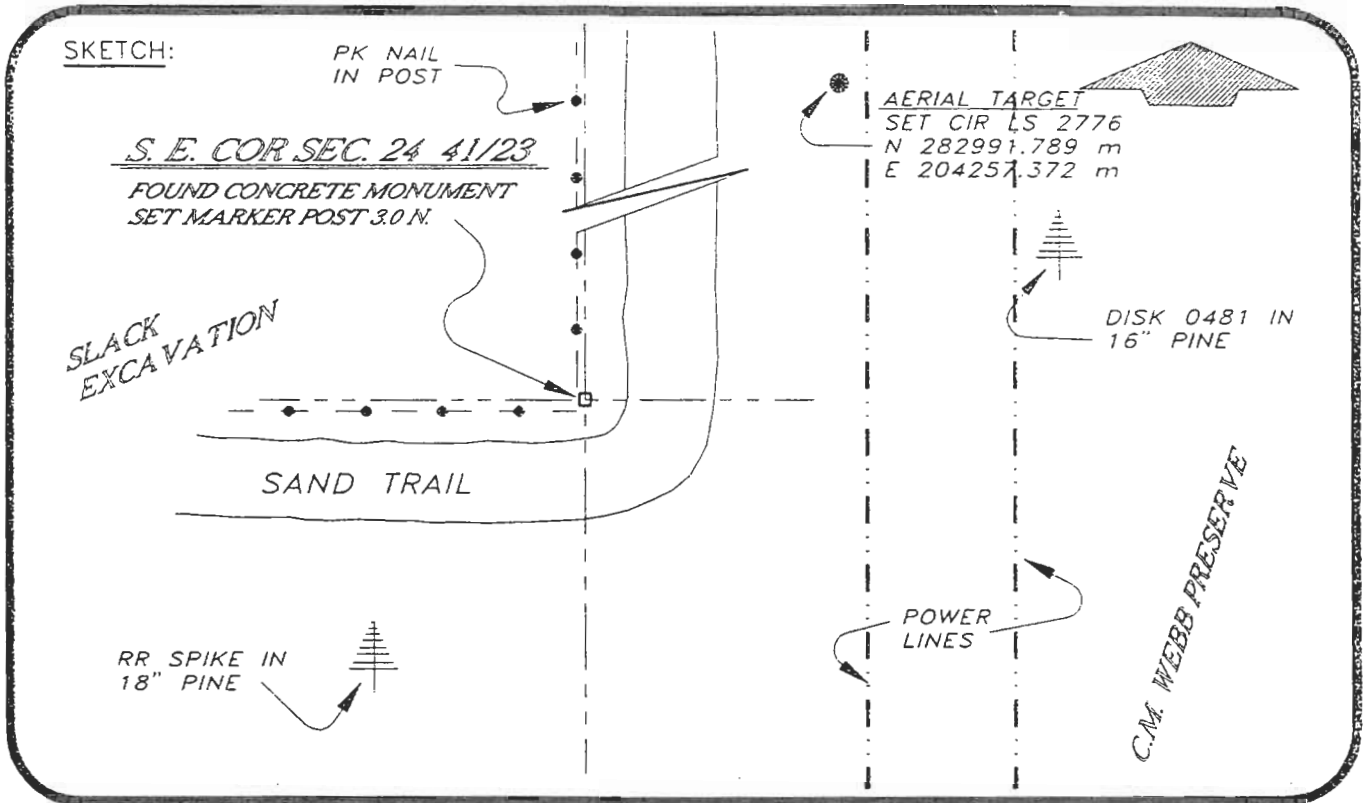
FEB 20 1995

SURVEY & MAPPING

4123R25

DOC. #

051003



BASIS OF BEARING SOLAR OBSERVATION

REFER FB 283/12

All bearings and distances must be from the corner to the witness. Indicate whether corner was found, set, or replaced and show north arrow.

REFERENCE MEASUREMENTS (at least three vicinity references must be given below even if they appear on the above sketch):

Description	Bearing	Distance
RR SPIKE IN 18" PINE TREE	S 42°47'49" W	41.24'
PK NAIK IN POST	N 00°01'55" W	395.82'
DISK 0481 IN 16" PINE	N 64°52'29" E	118.49'
SET CIR PLS 2776	N 07°46'51" E	139.87'

SURVEYORS CERTIFICATE: I certify the monument and accessories indicated above were field located on JUNE 6, 19 93.

[Signature] PLS 4260

UPDATED 2/13/05

SIGNATURE

2-15-95

DATE

CHARLOTTE COUNTY SURVEY DEPT.

FIRM OR AGENCY

7000 FLORIDA STREET

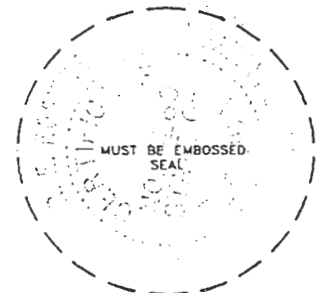
ADDRESS

PUNTA GORDA, FLA. 33950

CITY

STATE

508



SEND TO:

Department of Natural Resources
Bureau of Survey and Mapping
3900 Commonwealth Boulevard
Mail Station 105
Tallahassee, Florida 32399

DNR 53-001(16)
REV. 7/16/92
PAGE 2 OF 2

Completeness checked by: *[Signature]*
 Accepted and filed: 3-1-95
 B.L.M. - I.D. 25241930 Date
 D.N.R. USE ONLY