

4123T21

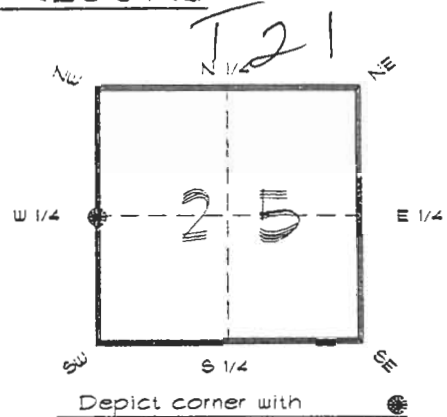
DOC. #

051004

**FLORIDA DEPARTMENT OF ENVIRONMENTAL PROTECTION
CERTIFIED CORNER RECORD**

CORNER DESCRIPTION:

W. 1/4 corner of Section 25,
Twp 41 S., Rge 23 E.,
Tallahassee Base Meridian,
CHARLOTTE County(s), Florida.



MONUMENTATION DESCRIPTION:

Describe original monument and accessories, or subsequent restoration. Give sources of information. (If no attempt was made to search for the original monument and accessories, this information is not necessary.)

Description of corner evidence found:
4"x4" CONCRETE MONUMENT

State method(s) to determine corner location (lost corners only):

HORIZONTAL POSITION INFORMATION (if determined):

Latitude 26°52'50.95080" N Longitude 81°58'23.84518" W
Y(Northing) 282199.619 m X(Easting) 202653.699 m Zone FLW
Convergence 0°00'43.475" Scale factor 0.99994126

Coordinate determination (circle one): Field traverse GPS

Horizontal datum (circle one): NAD27 NAD83(1986) NAD83(1990) other (explain)

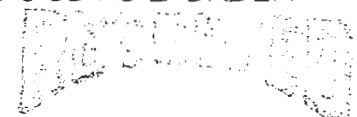
Order of accuracy as defined in Standards and Specifications for Geodetic Control Networks published by the Federal Geodetic Control Committee (circle one):

1st, 2nd, 3rd, class _____

or Minimum Technical Standards (Chapter 61G17, F.A.C.) ratio of closure for field data (example 1:10,000), _____ . This does not specify an order of accuracy.

Control point(s) used for survey: CHARLOTTE COUNTY HORIZONTAL CONTROL NETWORK INCLUDES HAYOLINE 2, PLACIDA 2, W260, PUNTPORT, & FLGPS 58 AS B ORDER STATIONS.

Comments:



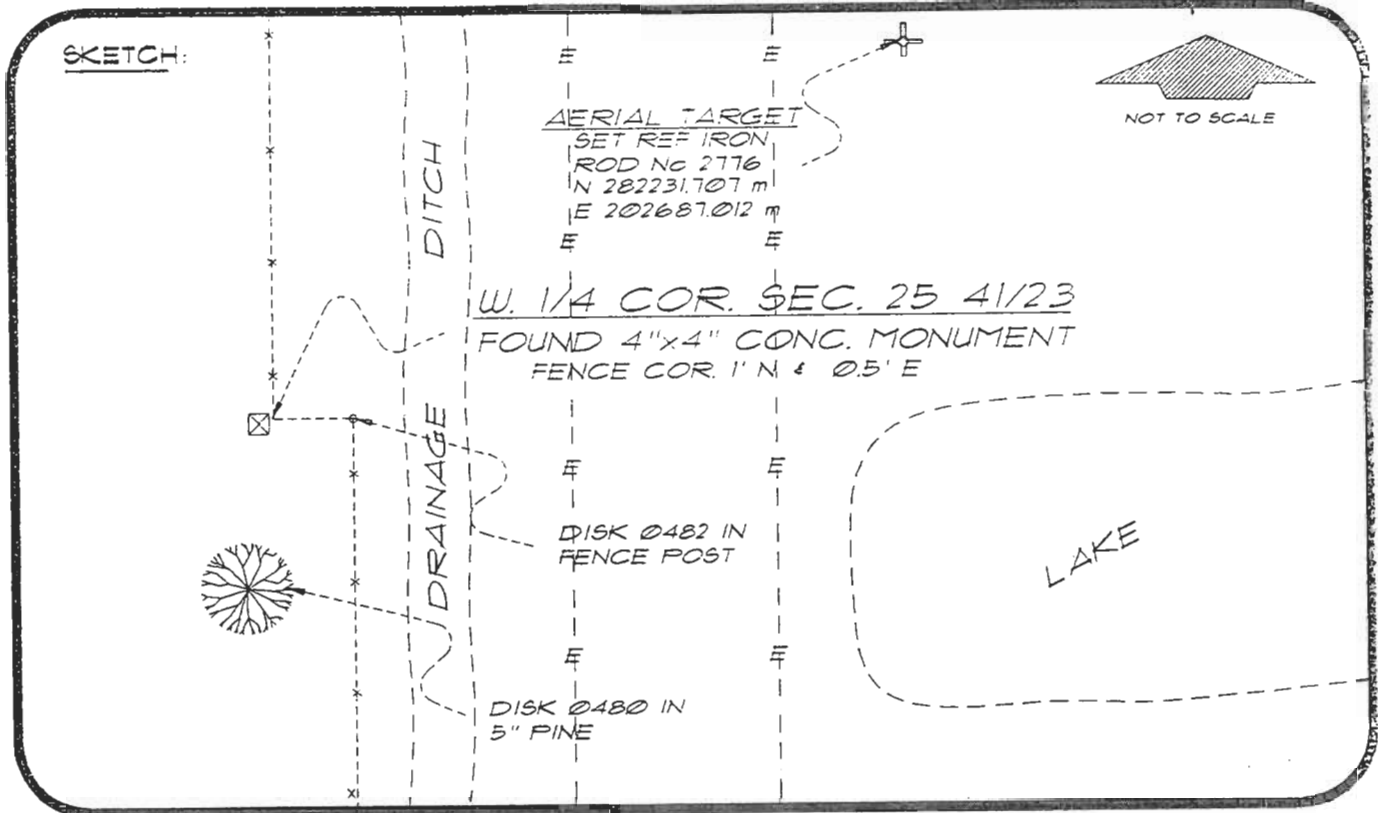
FEB 20 1995

SURVEY & MAPPING

051004

4123T21

DOC. #



BASIS OF BEARING SOLAR OBSERVATION REFER: FB 283/10

REFERENCE MEASUREMENTS

Description	Bearing	Distance
DISK Ø480 IN 5" PINE	S 02°31'57" W	20.60'
DISK Ø482 IN FENCE POST	N 87°31'37" E	7.34'
SET IRON ROD No 2776	N 46°05'07" E	151.75'

SURVEYORS CERTIFICATE: I certify the monument and accessories indicated above were field located on MAY 5 1993

R. P. Rosco

FLS 4260

UPDATED 2/14/95

SIGNATURE

2-15-05

DATE

CHARLOTTE COUNTY SURVEY DEPT.

FIRM OR AGENCY

1000 FLORIDA STREET

ADDRESS

PUNTA GORDA, FLORIDA 33950

CITY

STATE

508



Completeness checked by: *B. G. Ginter*

Accepted and filed: 3-1-95 Date

BLM. - I.D. 2600CL25 DNR USE ONLY

SEND TO:

Department of Environmental Protection
Bureau of Survey and Mapping
3900 Commonwealth Boulevard
Mail Station 105
Tallahassee, Florida 32399