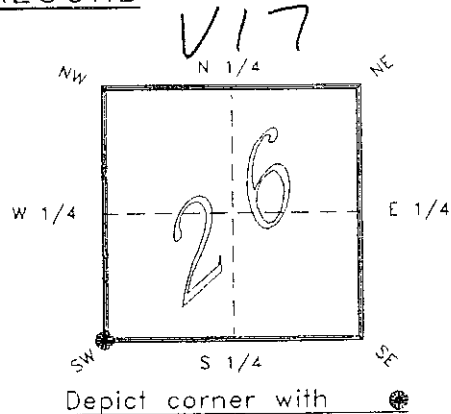


4123V17

FLORIDA DEPARTMENT OF ENVIRONMENTAL PROTECTION  
CERTIFIED CORNER RECORD

CORNER DESCRIPTION:

S.W. corner of Section 26 ,  
Twp 41 S. , Rge 23 E. ,  
Tallahassee Base Meridian,  
CHARLOTTE County(s), Florida.



MONUMENTATION DESCRIPTION:

Describe original monument and accessories, or subsequent restoration. Give sources of information. (If no attempt was made to search for the original monument and accessories, this information is not necessary.)

Description of corner evidence found:

6"x6" L.WOOD POST REPLACED WITH CONCRETE MONUMENT

State method(s) to determine corner location (lost corners only):

RECEIVED

JAN 31 1995

HORIZONTAL POSITION INFORMATION ( if determined ):

SURVEY & MAPPING

Latitude 26°52'24.53136" N Longitude 81°59'23.96219" W

Y(Northing) 281386.283 m X(Easting) 200994.642 m Zone FLW

Convergence 0°00'16.290" Scale factor 0.99994119

Coordinate determination (circle one): Field traverse GPS

Horizontal datum (circle one): NAD27 NAD83(1986) NAD83(1990) other (explain)

Order of accuracy as defined in "Standards and Specifications for Geodetic Control Networks" published by the Federal Geodetic Control Committee (circle one):

1st, 2nd, 3rd, class 1 ,

or Minimum Technical Standards (Chapter 21HH-6, F.A.C.) ratio of closure for field data (example 1:10,000), \_\_\_\_\_ . This does not specify an order of accuracy.

Control point(s) used for survey: CHARLOTTE COUNTY HORIZONTAL CONTROL NETWORK INCLUDES HAVOLINE 2, PLACIDA 2, W260, PUNTPORT, & FLGPS 58 AS B ORDER STATIONS.

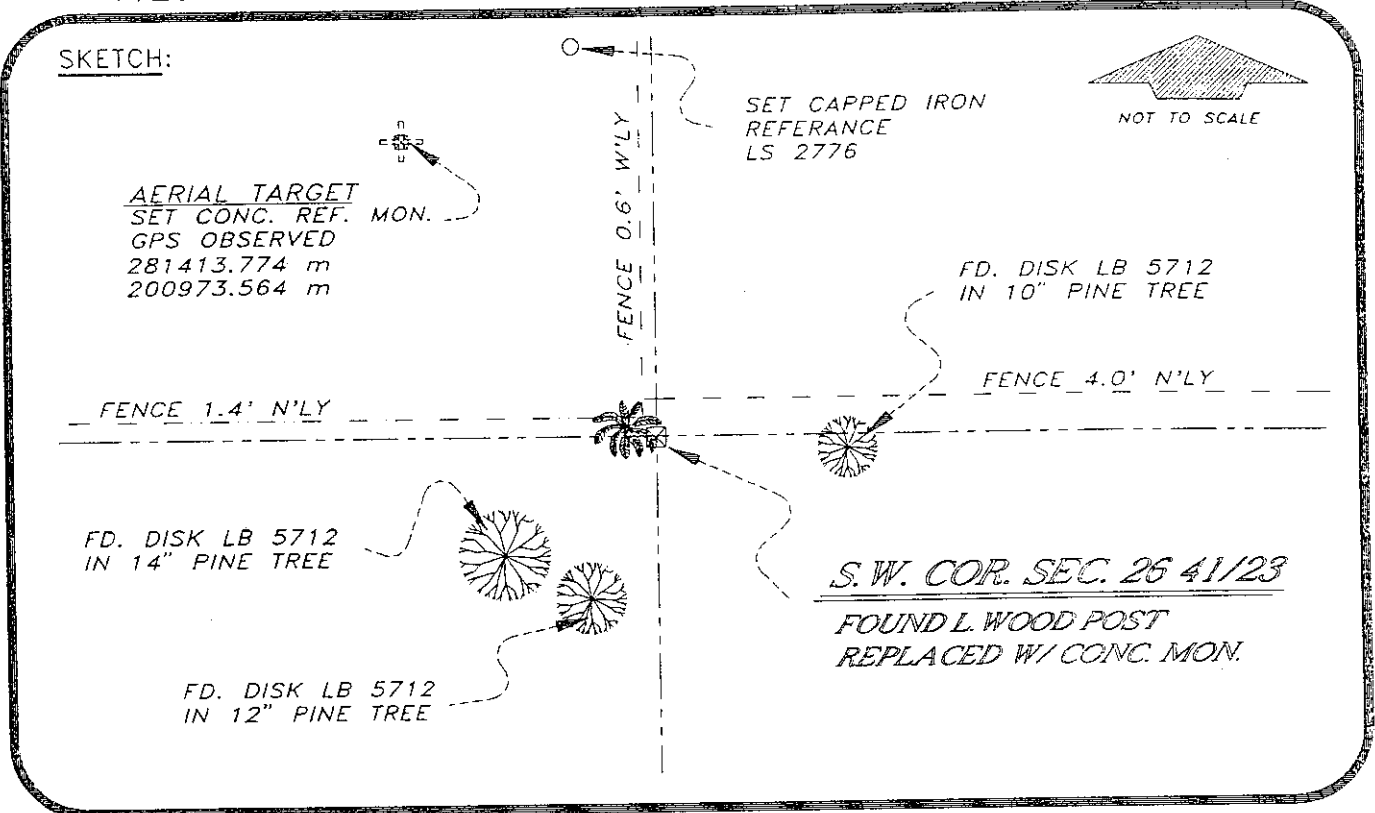
Comments:

051006

4123V17

DOC. #

SKETCH:



BASIS OF BEARING SOLAR OBSERVATION

REFER: FB 283/32

SET SURVEY MARKER POST 3.0' N'LY

REFERENCE MEASUREMENTS

| Description                  | Bearing       | Distance |
|------------------------------|---------------|----------|
| DISK LB 5712 IN 12" PINE     | S 18°46'27" W | 28.33'   |
| DISK LB 5712 IN 14" PINE     | S 48°43'55" W | 28.16'   |
| DISK LB 5712 IN 10" PINE     | S 88°50'25" E | 28.73'   |
| SET C.I. ROD LS 2776 ( REF ) | N 05°45'35" W | 137.74'  |
| SET REF. CONC. MON.          | N 37°28'28" W | 113.66'  |

SURVEYORS CERTIFICATE: I certify the monument and accessories indicated above were field located on MAY 18, 19 93.

*R.R. Ross*  
SIGNATURE

PLS 4260

UPDATED 1/26/95

1/30/95  
DATE

CHARLOTTE COUNTY SURVEY DEPT.

FIRM OR AGENCY

7000 FLORIDA STREET

ADDRESS

PUNTA GORDA, FLA. 33950

CITY

STATE



472  
G. L. CARROLL

Completeness checked by: *B. J. Fanta*  
 Accepted and filed: 3-1-95 Date  
 B.L.M. - I.D. 34272635 D.N.R. USE ONLY

SEND TO:

Department of Environmental Protection  
Bureau of Survey and Mapping  
3900 Commonwealth Boulevard  
Mail Station 105  
Tallahassee, Florida 32399