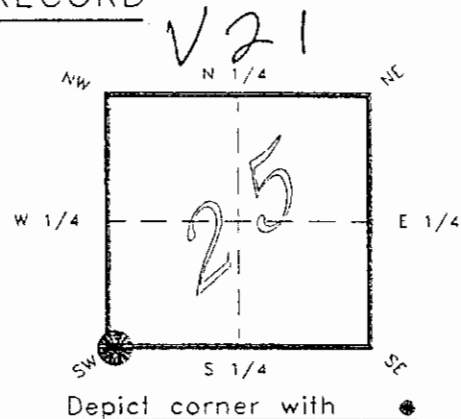


FLORIDA DEPARTMENT OF NATURAL RESOURCES
CERTIFIED CORNER RECORD

CORNER DESCRIPTION:

S.W. corner of Section 25,
Twp 41 S., Rge 23 E.,
Tallahassee Base Meridian,
CHARLOTTE County(s), Florida.



MONUMENTATION DESCRIPTION:

Describe original monument and accessories, or subsequent restoration. Give sources of information. (If no attempt was made to search for the original monument and accessories, this information is not necessary.)

Description of corner evidence found:

CONCRETE MONUMENT

State method(s) to determine corner location (lost corners only):

HORIZONTAL POSITION INFORMATION (if determined):

Latitude 26°52'26.28354"N Longitude 81°58'23.99317"W
Y(Northing) 281440.449 m X(Easting) 202649.774 m Zone FLW
Convergence 0°00'43.398" Scale factor 0.99994126

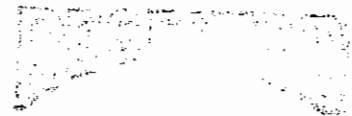
Coordinate determination (circle one): Field traverse GPS
Horizontal datum (circle one): NAD27 NAD83(1986) NAD83(1990) other (explain)

Order of accuracy as defined in "Standards and Specifications for Geodetic Control Networks" published by the Federal Geodetic Control Committee (circle one):
1st, 2nd, 3rd, class 1

or Minimum Technical Standards (Chapter 21HH-6, F.A.C.) ratio of closure for field data (example 1:10,000), _____ . This does not specify an order of accuracy.

Control point(s) used for survey:

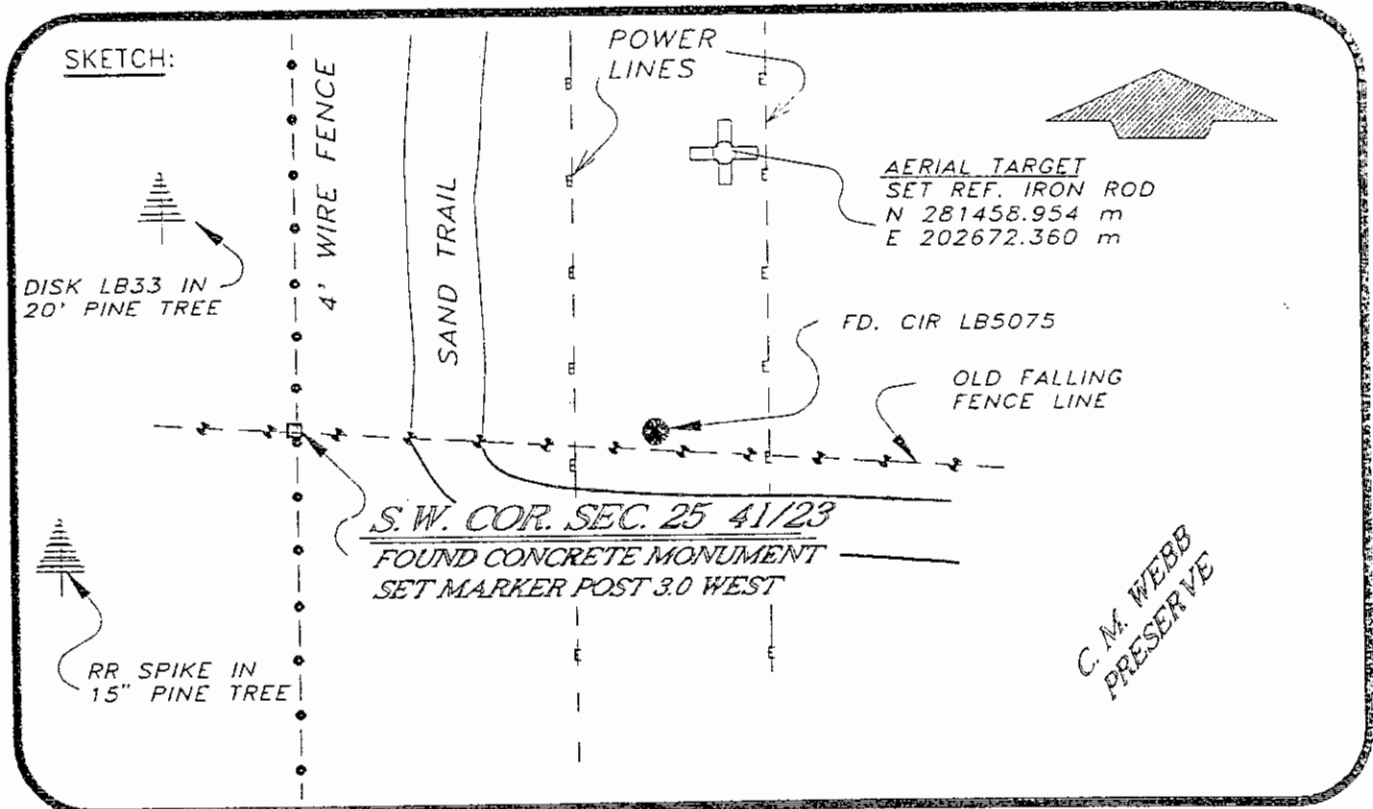
Comments:



FEB 20 1993

4123V21

DOC. #



C. M. WEBB
PRESERVE

BEARINGS BASED ON SOLAR OBSERVATION REF FB 283/8

All bearings and distances must be from the corner to the witness. Indicate whether corner was found, set, or replaced and show north arrow.

SET SURVEY MARKER POST 3' W'LY

REFERENCE MEASUREMENTS (at least three vicinity references must be given below even if they appear on the above sketch):

Description	Bearing	Distance
RR SPIKE IN 15" PINE TREE	S 61°09'21" W	41.87'
DISK LB 33 IN 20" PINE	N 17°17'40" W	60.33'
CIR LB 5075	S 87°43'39" E	50.01'
AERIAL TARGET	N 50°41'01" E	95.80'

SURVEYORS CERTIFICATE: I certify the monument and accessories indicated above were field located on MAY 5, 19 93.

[Signature]
SIGNATURE

PLS 4260

UPDATED 2/14/95

DATE

2-15-95

CHARLOTTE COUNTY SURVEY DEPT.

FIRM OR AGENCY

7000 FLORIDA STREET

ADDRESS

PUNTA GORDA, FLA. 33950

CITY

STATE



472
WALCHRIST

Completeness checked by: *[Signature]*
 Accepted and filed: 3-1-95 Date
 B.L.M. - I.D. 35262536 D.N.R. USE ONLY

SEND TO:

Department of Natural Resources
 Bureau of Survey and Mapping
 3900 Commonwealth Boulevard
 Mail Station 105
 Tallahassee, Florida 32399

DNR 53-001(16)
 REV. 7/15/92
 PAGE 2 OF 2