

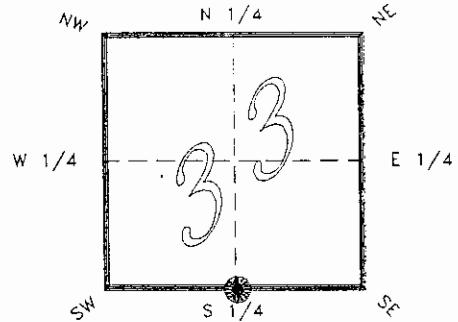
4123Z11


FLORIDA DEPARTMENT OF NATURAL RESOURCES
CERTIFIED CORNER RECORD

211

CORNER DESCRIPTION:

S. 1/4 corner of Section 33,
Twp 41 S., Rge 23 E.,
Tallahassee Base Meridian,
CHARLOTTE County(s), Florida.



Depict corner with 

MONUMENTATION DESCRIPTION:

Describe original monument and accessories, or subsequent restoration. Give sources of information. (If no attempt was made to search for the original monument and accessories, this information is not necessary.)

Description of corner evidence found:

SET CONCRETE MONUMENT BY SUBDIVISION PLAT DATA.
(SEE COMMENTS BELOW)

RECEIVED

JAN 31 1993

State method(s) to determine corner location (lost corners only):

SURVEY & MAPPING

HORIZONTAL POSITION INFORMATION (if determined):

Latitude 26°51'30.85881" N Longitude 82°00'54.66396" W
Y(Northing) 279734.489 m X(Easting) 198491.079 m Zone FLW
Convergence -0°00'24.697" Scale factor 0.99994120

Coordinate determination (circle one): Field traverse GPS

Horizontal datum (circle one): NAD27 NAD83(1986) NAD83(1990) other (explain)

Order of accuracy as defined in "Standards and Specifications for Geodetic Control Networks" published by the Federal Geodetic Control Committee (circle one):

1st, 2nd, 3rd, class 1

or Minimum Technical Standards (Chapter 21HH-6, F.A.C.) ratio of closure for field data (example 1:10,000), . This does not specify an order of accuracy.

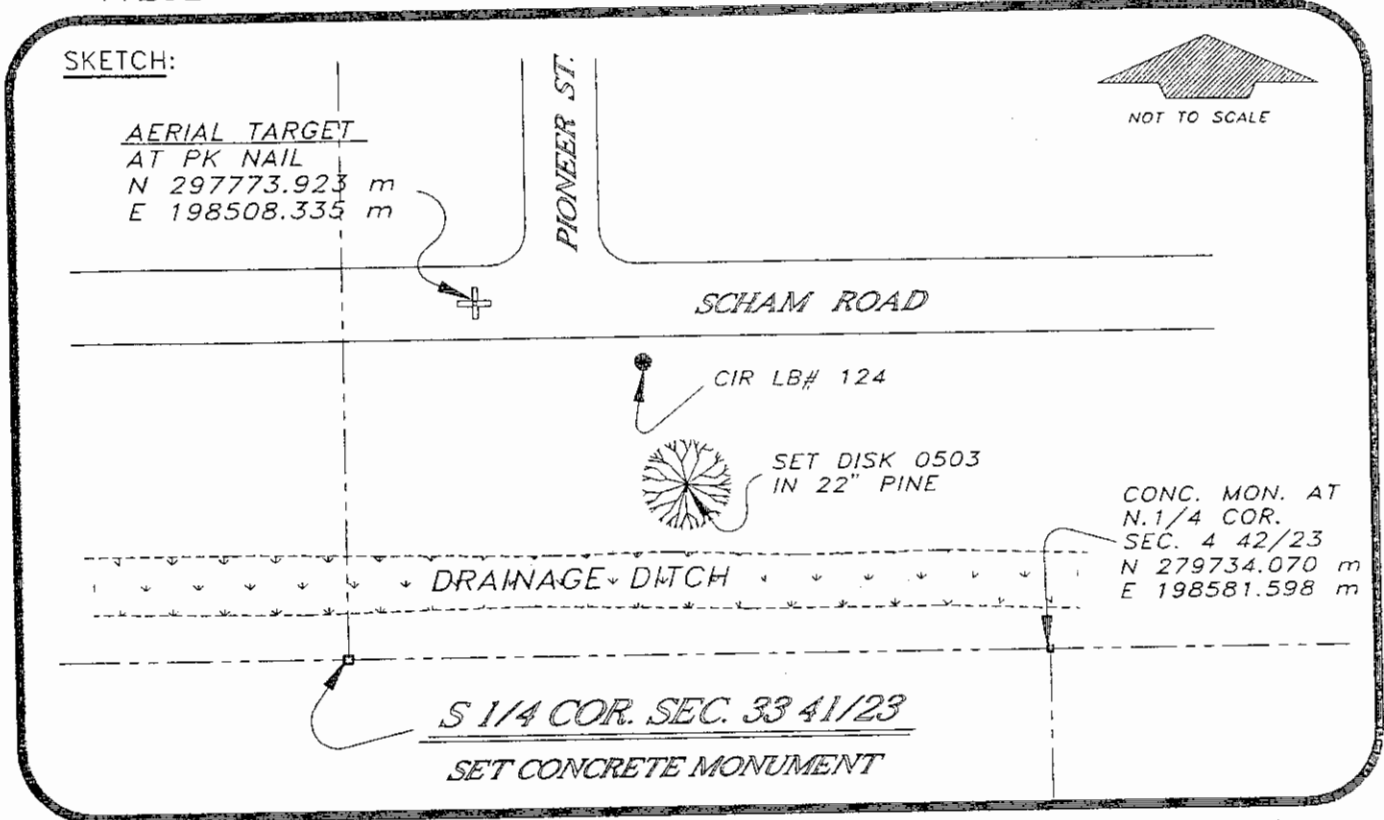
Control point(s) used for survey: CHARLOTTE COUNTY HORIZONTAL CONTROL NETWORK INCLUDES HAVOLINE 2, PLACIDA 2, W260, PUNTA PORT, & FLGPS 58 AS B ORDER STATIONS.

Comments: REFER TO SOUTH PUNTA GORDA HEIGHTS 5th Add.
PB. 3 PG. 96D&E

051010

4123Z11

DOC. #



BASIS OF BEARING SOLAR OBSERVATION

REFER FB 283/48

All bearings and distances must be from the corner to the witness. Indicate whether corner was found, set, or replaced and show north arrow.

SET SURVEY MARKER POST 3.0' S'LY

REFERENCE MEASUREMENTS (at least three vicinity references must be given below even if they appear on the above sketch):

Description	Bearing	Distance
FOUND CIR LB# 124	N 39°32'24" E	148.06'
N 1/4 COR. SEC. 4 42/23	S 89°44'31" E	297.00' p&m
DISK 0503 IN 22" PINE TREE	N 70°05'44" E	131.19'
AERIAL TARGET	N 23°37'36" E	141.23'

SURVEYORS CERTIFICATE: I certify the monument and accessories indicated above were field located on JUNE 7, 19 93

UPDATED 1/26/95

[Signature]
SIGNATURE PLS 4260

1/30/95
DATE

CHARLOTTE COUNTY SURVEY DEPT.
FIRM OR AGENCY

7000 FLORIDA STREET
ADDRESS

PUNTA GORDA, FLA. 33950
CITY STATE

473



Completeness checked by: *[Signature]*

Accepted and filed: 3-1-95

B.L.M. - I.D. 04CLO 3588 D.N.R. USE ONLY

SEND TO:
Department of Natural Resources
Bureau of Survey and Mapping
3900 Commonwealth Boulevard
Mail Station 105
Tallahassee, Florida 32399

DNR 53-001(16)
REV. 7/16/92
PAGE 2 OF 2