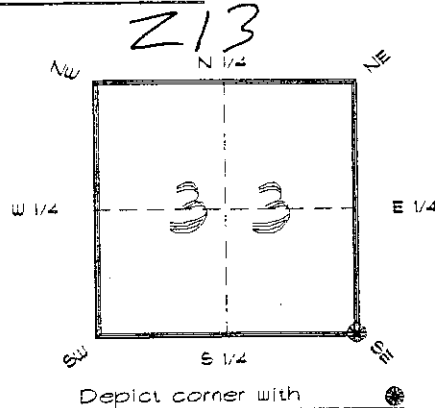


4123Z13

FLORIDA DEPARTMENT OF ENVIRONMENTAL PROTECTION
CERTIFIED CORNER RECORD

CORNER DESCRIPTION:

S. E. corner of Section 33
Twp 41 S., Rge 23 E.
Tallahassee Base Meridian,
CHARLOTTE County(s), Florida.



MONUMENTATION DESCRIPTION:

Describe original monument and accessories, or subsequent restoration. Give sources of information. (If no attempt was made to search for the original monument and accessories, this information is not necessary.)

RECEIVED

JAN 31 1995

Description of corner evidence found:

SET CONCRETE MONUMENT BY SINGLE PROPORTION FROM SURVEY & MAPPING SUBDIVISION PLAT DATA AND EXISTING MONUMENTATION.

State method(s) to determine corner location (lost corners only):

HORIZONTAL POSITION INFORMATION (if determined):

Latitude 26°51'30.70571" N Longitude 82°00'25.27953" W

Y(Northing) 279729.706 m X(Easting) 199302.192 m Zone FLW

Convergence -0°00'11.421" Scale factor 0.99994118

Coordinate determination (circle one): Field traverse GPS

Horizontal datum (circle one): NAD27 NAD83(1986) NAD83(1990) other (explain)

Order of accuracy as defined in Standards and Specifications for Geodetic Control Networks published by the Federal Geodetic Control Committee (circle one):
1st, 2nd, 3rd class

or Minimum Technical Standards (Chapter 6IG17, F.A.C.) ratio of closure for field data (example 1:10,000), _____ . This does not specify an order of accuracy.

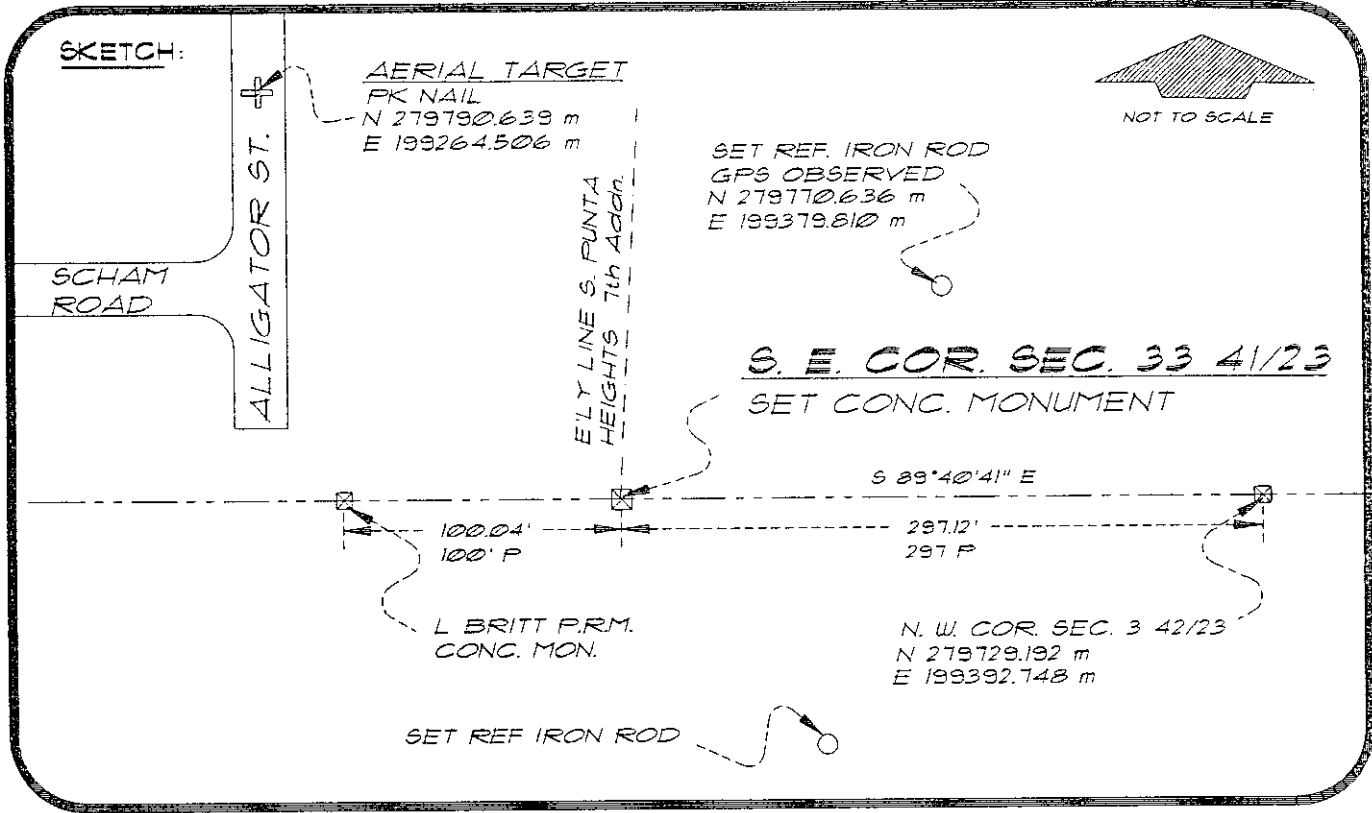
Control point(s) used for survey: CHARLOTTE COUNTY HORIZONTAL CONTROL NETWORK INCLUDES HAVOLINE 2, PLACIDA 2, W260, PUNTPORT, & FLGPS 58 AS B ORDER STATIONS.

Comments:

051011

4123Z13

DOC. #



BASIS OF BEARING SOLAR OBSERVATION REFER: FB 283/30

REFERENCE MEASUREMENTS

Description	Bearing	Distance
L. BRITT P.R.M. CONC. MON.	N 89°40'41" W	100.04'
SET REF IRON ROD	S 34°01'38" E	100.30'
N. W. COR. SEC. 3 42/23	S 89°40'41" E	297.12'
SET REF. IRON ROD (GPS OBSERVED)	N 62°11'43" E	287.90"
AERIAL TARGET	N 31°43'58" W	235.07'

SURVEYORS CERTIFICATE: I certify the monument and accessories indicated above were field located on MAY 18, 1993

R. P. Ros PLS 4260

UPDATED 1/26/95

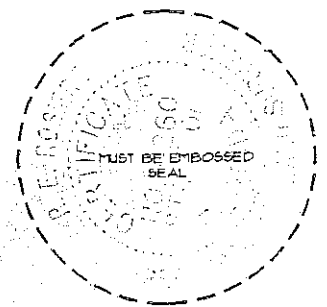
SIGNATURE
1/30/95
DATE

CHARLOTTE COUNTY SURVEY DEPT.
FIRM OR AGENCY

1000 FLORIDA STREET
ADDRESS

PUNTA GORDA, FLORIDA 33950
CITY STATE

473



Completeness checked by: [Signature]

Accepted and filed: 3-1-95 Date

BLM. - ID. 00333400 DEP. USE ONLY

SEND TO:

Department of Environmental Protection
Bureau of Survey and Mapping
3900 Commonwealth Boulevard
Mail Station 105
Tallahassee, Florida 32399