

4123Z21

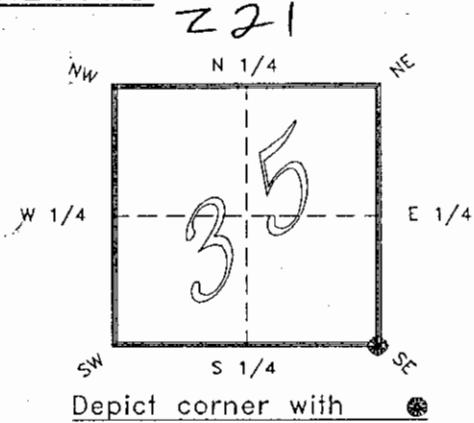
DOC. #

055746

FLORIDA DEPARTMENT OF ENVIRONMENTAL PROTECTION
CERTIFIED CORNER RECORD

CORNER DESCRIPTION:

S. E. corner of Section 35 ,
Twp 41 S. , Rge 23 E. ,
Tallahassee Base Meridian,
CHARLOTTE County(s), Florida.



MONUMENTATION DESCRIPTION:

Describe original monument and accessories, or subsequent restoration. Give sources of information. (If no attempt was made to search for the original monument and accessories, this information is not necessary.)

Description of corner evidence found:
80d SPIKE WITH DISK RLS 3760

State method(s) to determine corner location (lost corners only):

HORIZONTAL POSITION INFORMATION (if determined):

Latitude 26°51'29.67002"N Longitude 81°58'27.04496" W
Y(Northing) 279698.073 m X(Easting) 202565.900 m Zone _____
Convergence 0°00'41.996" Scale factor 0.99994126

Coordinate determination (circle one): Field traverse GPS
Horizontal datum (circle one): NAD27 NAD83(1986) NAD83(1990) other (explain)

Order of accuracy as defined in "Standards and Specifications for Geodetic Control Networks" published by the Federal Geodetic Control Committee (circle one):
1st, 2nd, 3rd, class 1 ,

or Minimum Technical Standards (Chapter 21HH-6, F.A.C.) ratio of closure for field data (example 1:10,000), _____ . This does not specify an order of accuracy.

Control point(s) used for survey: CHARLOTTE COUNTY HORIZONTAL CONTROL NETWORK INCLUDES HAVOLINE 2, PLACIDA 2, W260, PUNTPORT, & FLGPS 58 AS B ORDER STATIONS.

Comments:

RECEIVED

MAR 21 1996

SURVEY & MAPPING

4123Z21

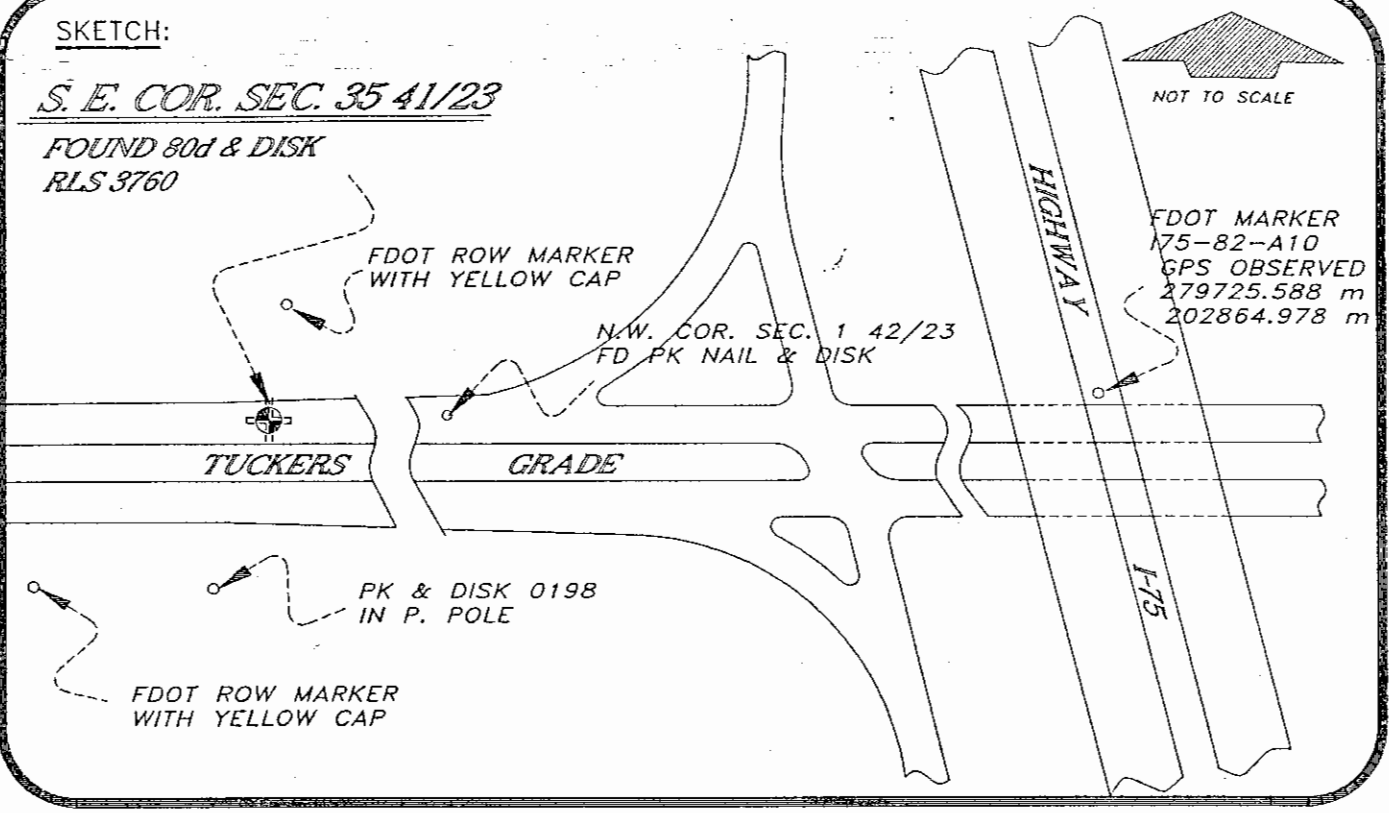
DOC. #

055746

SKETCH:

S. E. COR. SEC. 35 41/23

FOUND 80d & DISK
RLS 3760



BASIS OF BEARING SOLAR OBSERVATION

REFER: FB 283/03

REFERENCE MEASUREMENTS

| Description | Bearing | Distance |
|------------------------|---------------|----------|
| FDOT ROW MARKER | N 02°56'43" E | 99.68' |
| FDOT ROW MARKER | S 60°53'09" W | 316.26' |
| DISK 0198 IN P. POLE | S 33°25'12" W | 184.68' |
| N. W. COR SEC. 1 42/23 | S 89°58'53" E | 297.08' |

SURVEYORS CERTIFICATE: I certify the monument and accessories indicated above were field located on JULY 7, , 19 92 .

R. P. Ross

PLS 4260

SIGNATURE

OCTOBER 9, 1995

DATE

CHARLOTTE COUNTY SURVEY DEPT.

FIRM OR AGENCY

7000 FLORIDA STREET

ADDRESS

PUNTA GORDA,

CITY

FLA.

STATE

33950



SEND TO:

Department of Environmental Protection
Bureau of Survey and Mapping
3900 Commonwealth Boulevard
Mail Station 105
Tallahassee, Florida 32399

Completeness checked by: *R. P. Ross*

Accepted and filed: *R. P. Ross*

4-1-96

Date

B.L.M. - I.D. 00353600

D.N.R. USE ONLY