

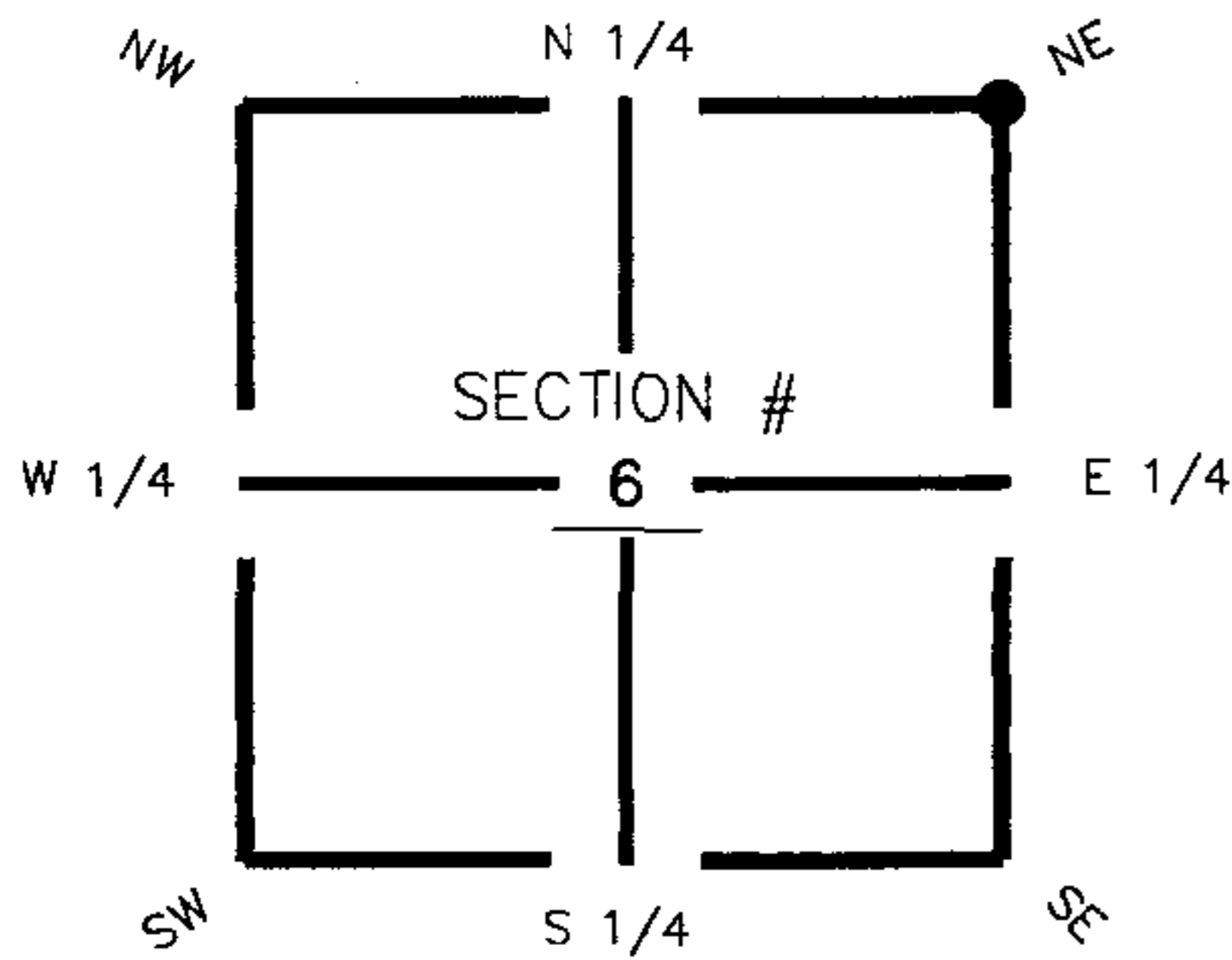
FLORIDA DEPARTMENT OF ENVIRONMENTAL PROTECTION CERTIFIED CORNER RECORD

089341

DOC. # _____

CORNER DESCRIPTION: MONUMENTATION DESCRIPTION (EVIDENCE FOUND OR METHOD TO SET)

Depict corner with A-5

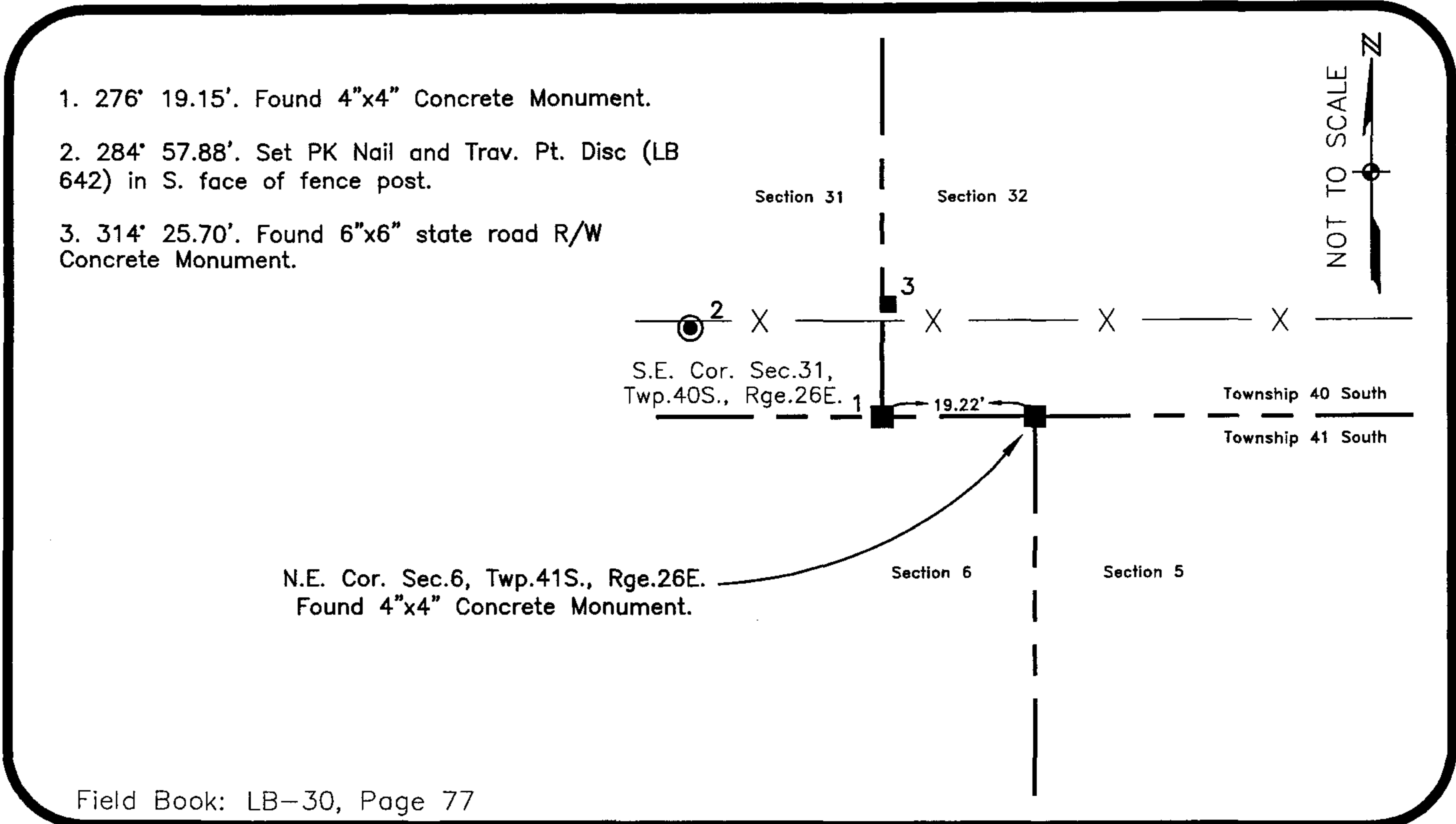


Found 4"x4"
Concrete Monument

HORIZONTAL POSITION INFORMATION (if determined):

Latitude 26° 56' 44.20558" N Longitude 81° 44' 39.88611" W
 Y(NORTHING-Ft.) 949485.54 X(EASTING-Ft.) 739431.03 Zone FL83-WF
 Convergence 0° 06' 56.94680" Scale factor 0.999949125
 Coordinate determination (circle one): Field traverse (GPS)
 Horizontal datum (circle one): NAD27 NAD83(1986) (NAD83(1999)) other (explain) _____
 Accuracy (circle one): 1st (2nd) 3rd other _____

NE corner of Section 6
Twp 41 South, Rge 26 East
 Tallahassee Base Meridian,
Charlotte County(s), Florida



1. 276' 19.15'. Found 4"x4" Concrete Monument.
2. 284' 57.88'. Set PK Nail and Trav. Pt. Disc (LB 642) in S. face of fence post.
3. 314' 25.70'. Found 6"x6" state road R/W Concrete Monument.

Field Book: LB-30, Page 77

SURVEYORS CERTIFICATE:

I certify the monument and accessories indicated above were field located on October 17, 2005

[Signature]
 SIGNATURE
 Johnson Engineering
 FIRM OR AGENCY
 251 West Hickpochee (SR80)
 ADDRESS
 La Belle, Florida 33935
 CITY STATE ZIP
 (863) 612-0394
 PHONE NUMBER
 October 27, 2005
 DATE

EMBOSSSED SEAL OVER SIGNATURE

SEND ORIGINAL TO:
 Department of Environmental Protection
 Bureau of Surveying and Mapping
 3900 Commonwealth Boulevard
 Mail Station 105
 Tallahassee, Florida 32399

Processed: 11-13-06 YMB
 B.L.M. - I.D. 203700
 QUAD - I.D. 2414 Telegraph Swamp NW