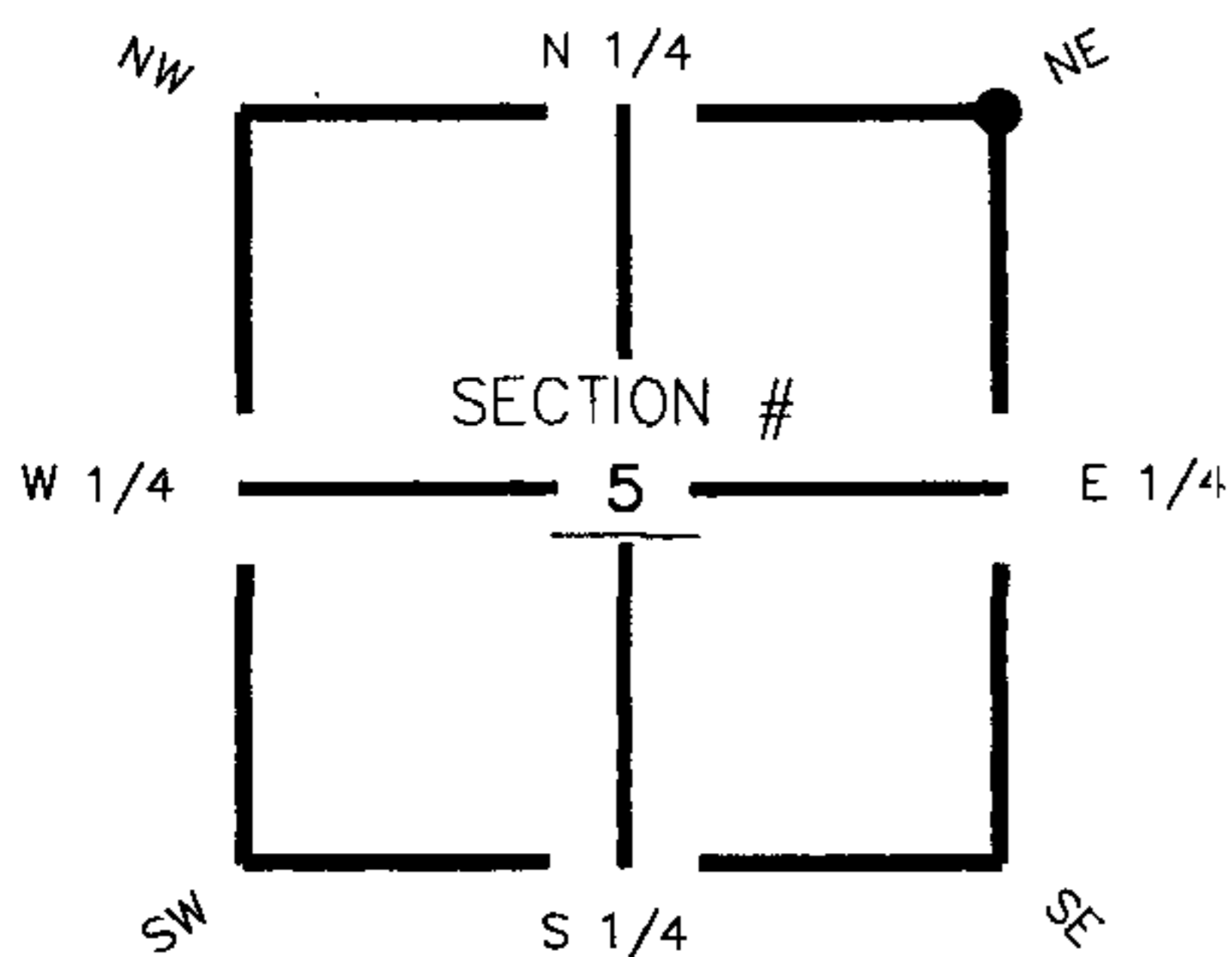


# FLORIDA DEPARTMENT OF ENVIRONMENTAL PROTECTION CERTIFIED CORNER RECORD

DOC. # 089339

**CORNER DESCRIPTION:** MONUMENTATION DESCRIPTION (EVIDENCE FOUND OR METHOD TO SET)

Depict corner with  A-9



Set PK Nail & Disc  
(LB 642)

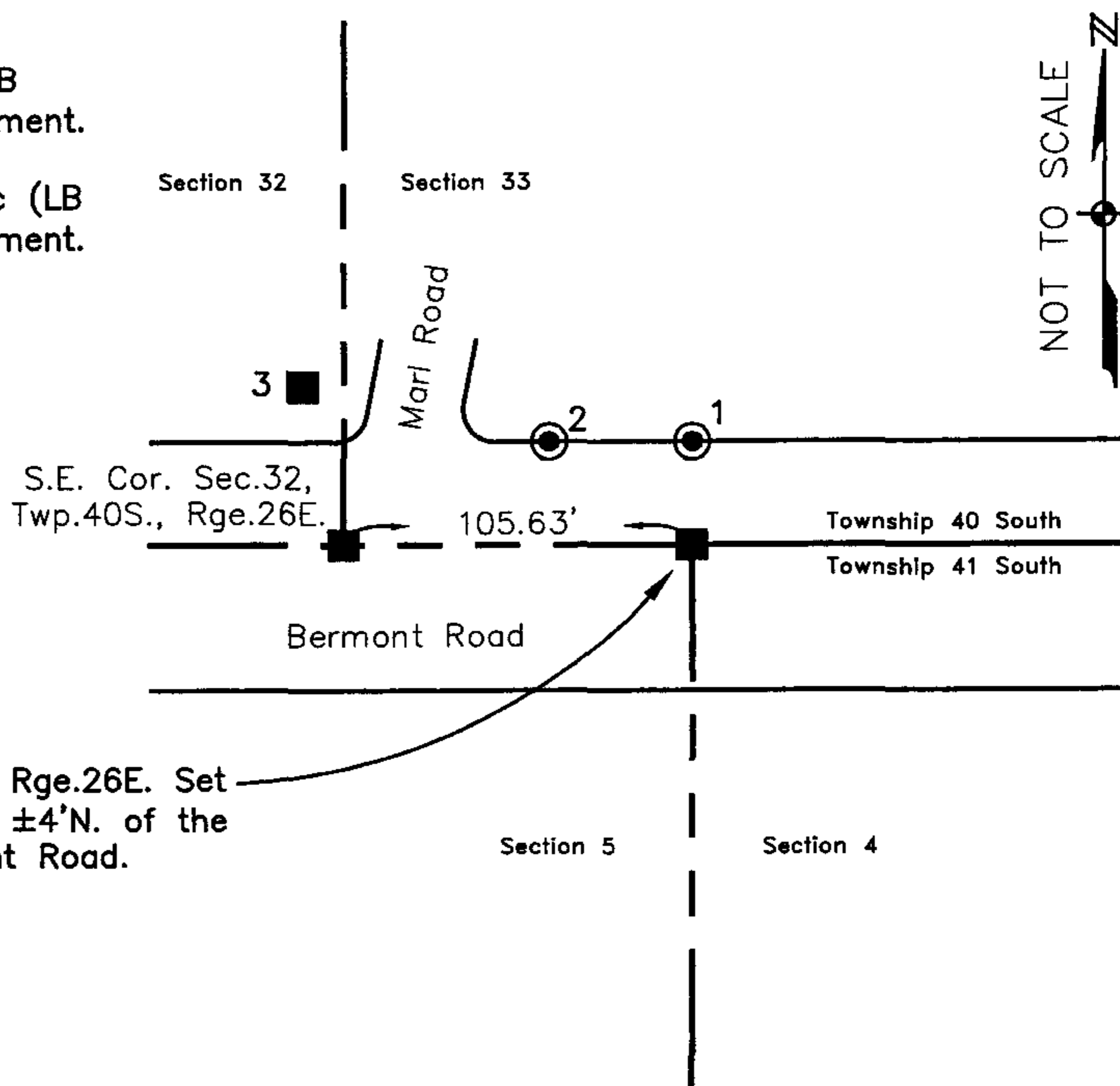
**HORIZONTAL POSITION INFORMATION ( if determined ):**

Latitude 26° 56' 44.42404" N Longitude 81° 43' 40.92273" W  
 Y(NORTHING-Ft.) 949518.73 X(EASTING-Ft.) 744766.81 Zone FL83-WF  
 Convergence 0° 07' 23.66711" Scale factor 0.999950176

NE corner of Section 5  
 Twp 41 South, Rge 26 East  
 Tallahassee Base Meridian,  
Charlotte County(s), Florida

Coordinate determination (circle one): Field traverse  GPS  
 Horizontal datum (circle one): NAD27 NAD83(1986)  NAD83(1999) other (explain)  
 Accuracy (circle one): 1st  2nd 3rd other \_\_\_\_\_

1. 7' 7.93'. Set PK Nail and Trav. Pt. Disc (LB 642) in white paint stripe at N. edge of pavement.
2. 284° 56.67'. Set PK Nail and Trav. Pt. Disc (LB 642) in white paint stripe at N. edge of pavement.
3. 300° 115.45'. Found 6"x6" state road R/W Concrete Monument.



N.E. Cor. Sec.5, Twp.41S., Rge.26E. Set  
 PK Nail & Disc (LB 642), ±4'N. of the  
 Centerline of Bermont Road.

Field Book: LB-33, Page 6

**SURVEYORS CERTIFICATE:**

I certify the monument and accessories indicated above were field located on October 18, 2005

*[Signature]*  
 SIGNATURE  
 Johnson Engineering, Inc.  
 FIRM OR AGENCY  
 251 West Hickpachie (SR80)  
 ADDRESS  
 La Belle, Florida 33935  
 CITY STATE ZIP  
 (863) 612-0594  
 PHONE NUMBER  
 October 27, 2005  
 DATE

**SEND ORIGINAL TO:**  
 Department of Environmental Protection  
 Bureau of Surveying and Mapping  
 3900 Commonwealth Boulevard  
 Mail Station 105  
 Tallahassee, Florida 32399

Processed: 11-13-06 MB  
 B.L.M. - I.D. 303700  
 QUAD - I.D. 2414 Telegraph Swamp NW

EMBOSSSED SEAL OVER SIGNATURE