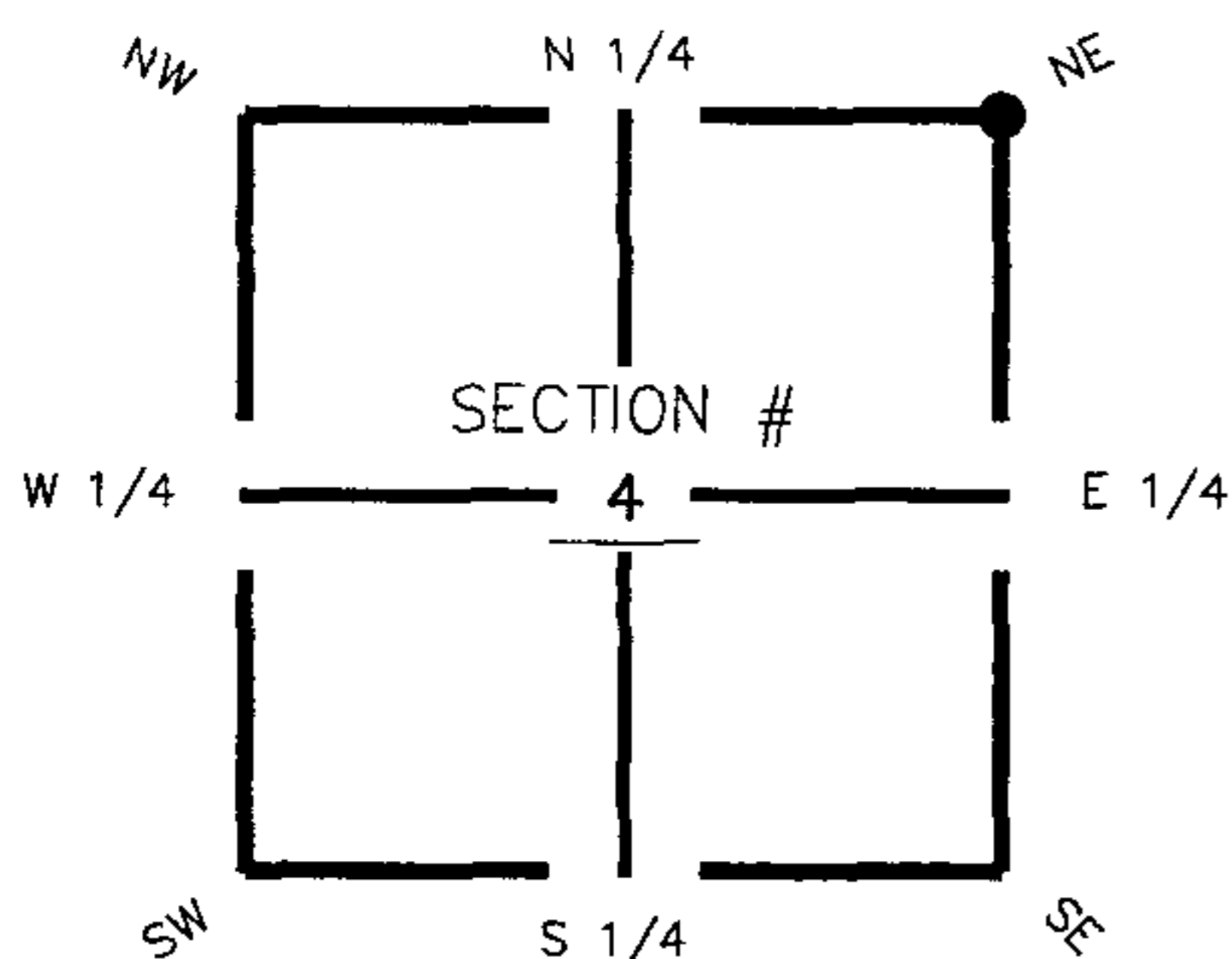


FLORIDA DEPARTMENT OF ENVIRONMENTAL PROTECTION CERTIFIED CORNER RECORD

DOC. # 089338

CORNER DESCRIPTION: MONUMENTATION DESCRIPTION (EVIDENCE FOUND OR METHOD TO SET)

Depict corner with A-13

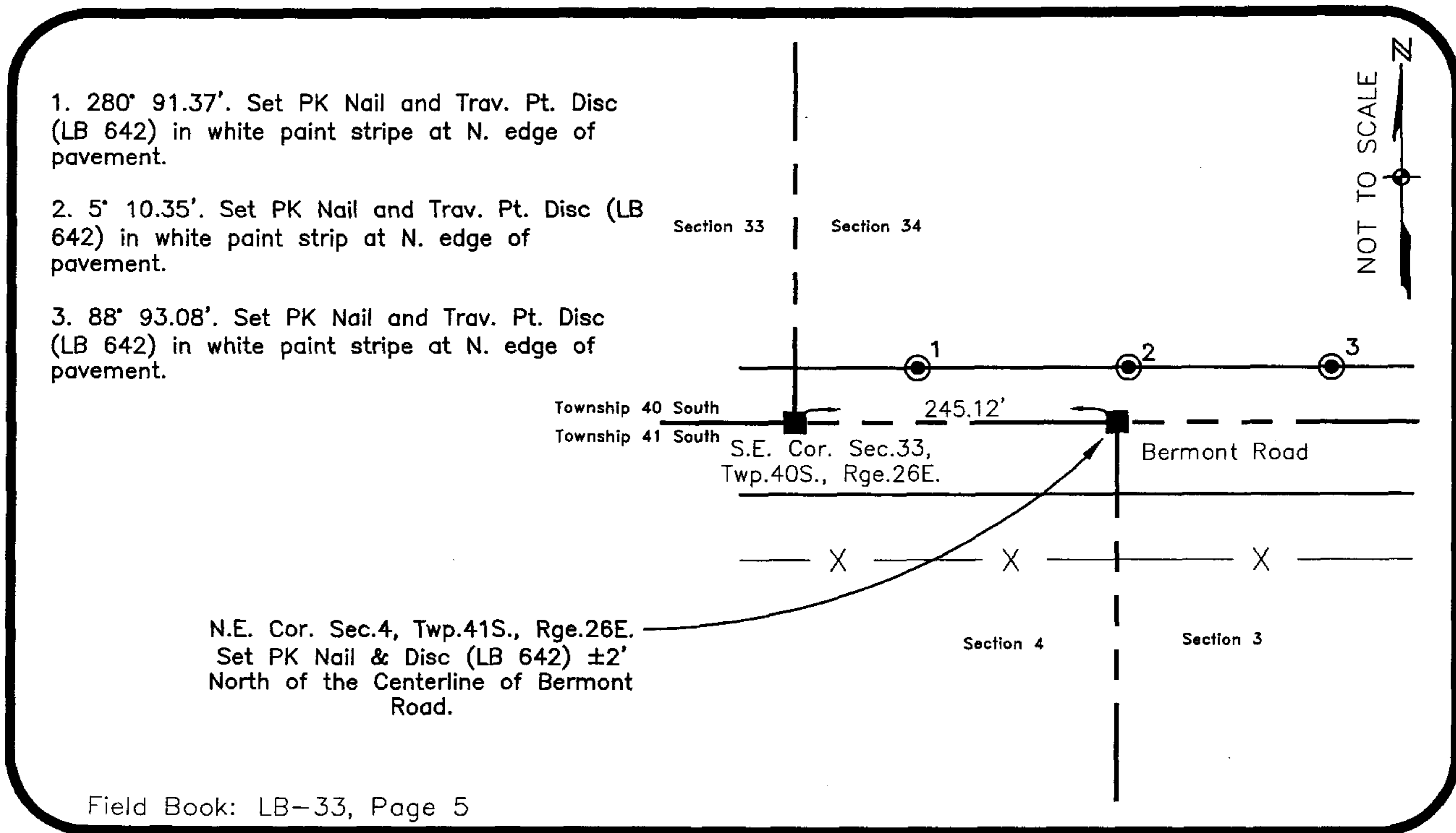


Set PK Nail & Disc
(LB 642)

HORIZONTAL POSITION INFORMATION (if determined):

Latitude 26° 56' 44.01125" N Longitude 81° 42' 40.95481" W
 Y(NORTHING-Ft.) 949489.08 X(EASTING-Ft.) 750193.64 Zone FL83-WF
 Convergence 0° 07' 50.83998" Scale factor 0.999951312
 Coordinate determination (circle one): Field traverse GPS
 Horizontal datum (circle one): NAD27 NAD83(1986) NAD83(1999) other (explain)
 Accuracy (circle one): 1st 2nd 3rd other _____

NE corner of Section 4
 Twp 41 South , Rge 26 East
 Tallahassee Base Meridian,
Charlotte County(s), Florida



Field Book: LB-33, Page 5

SURVEYORS CERTIFICATE:

I certify the monument and accessories indicated above were field located on October 18, 2005

[Signature]
 SIGNATURE _____ 4912
 Johnson Engineering, Inc. PSM NO. _____
 251 West Hickpochee (SR80) LB NO. 642
 ADDRESS _____
 La Balle : Florida 33935
 CITY STATE ZIP
 (863) 612-0594 : Florida 33935
 PHONE NUMBER DATE
 October 27, 2005

EMBOSSSED SEAL OVER SIGNATURE

SEND ORIGINAL TO:
 Department of Environmental Protection
 Bureau of Surveying and Mapping
 3900 Commonwealth Boulevard
 Mail Station 105
 Tallahassee, Florida 32399

Processed: 11-13-06 MB D.E.P. USE ONLY
 B.L.M. - I.D. 403700
 QUAD - I.D. 2414 telegraph Swamp NW