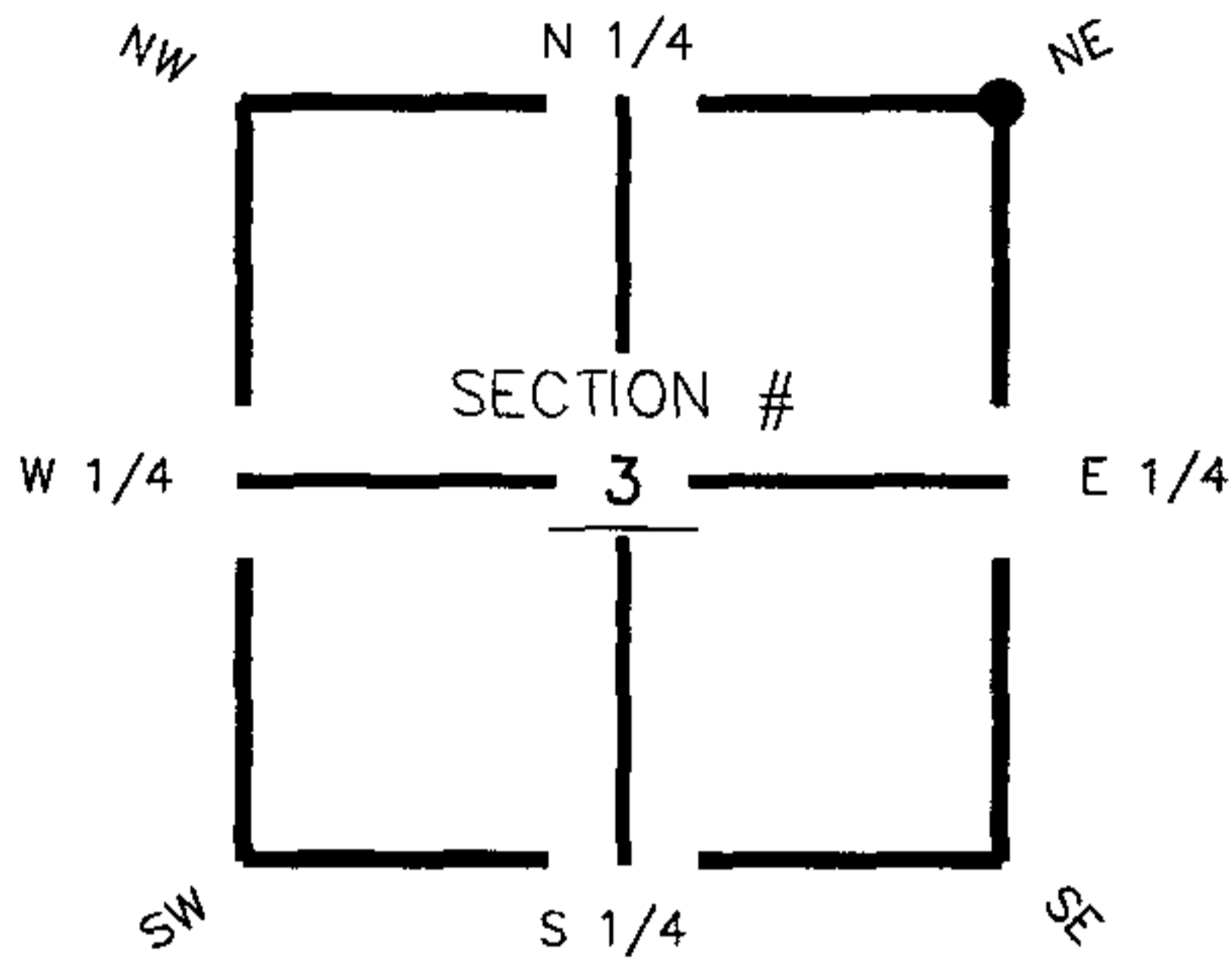


FLORIDA DEPARTMENT OF ENVIRONMENTAL PROTECTION CERTIFIED CORNER RECORD

DOC. # 089337

CORNER DESCRIPTION: MONUMENTATION DESCRIPTION (EVIDENCE FOUND OR METHOD TO SET)

Depict corner with A-17



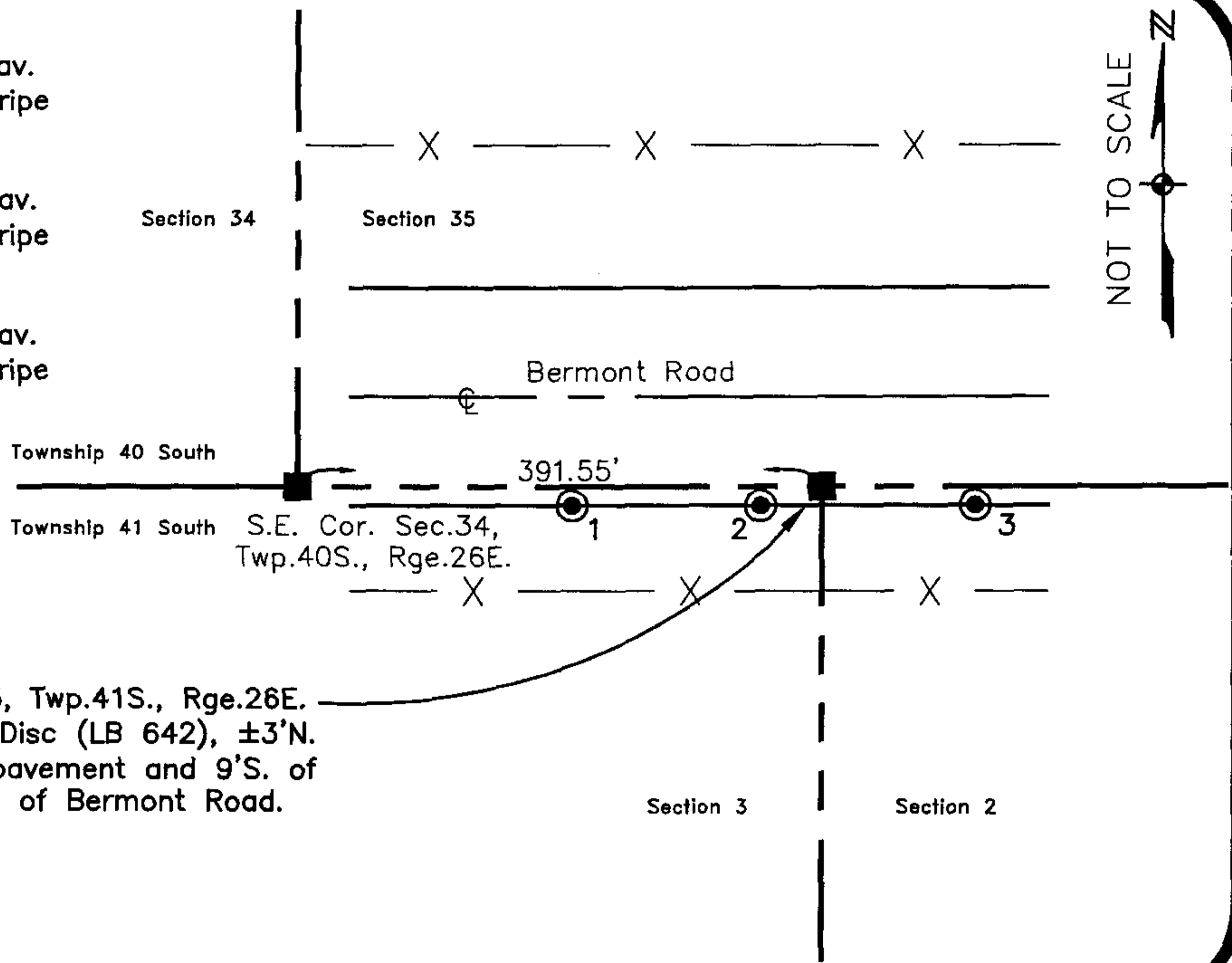
Set PK Nail & Disc
(LB 642)

HORIZONTAL POSITION INFORMATION (if determined):

Latitude 26° 56' 43.86251" N Longitude 81° 41' 40.96888" W
 Y(NORTHING-Ft.) 949486.81 X(EASTING-Ft.) 755622.05 Zone FL83-WF
 Convergence 0° 08' 18.02210" Scale factor 0.999952517
 Coordinate determination (circle one): Field traverse GPS
 Horizontal datum (circle one): NAD27 NAD83(1986) NAD83(1999) other (explain)
 Accuracy (circle one): 1st 2nd 3rd other _____

NE corner of Section 3
Twp 41 South, Rge 26 East
 Tallahassee Base Meridian,
Charlotte County(s), Florida

1. 272' 85.87'. Set PK Nail and Trav.
Pt. Disc (LB 642) in white paint stripe
at S. edge of pavement.
2. 266' 19.92'. Set PK Nail and Trav.
Pt. Disc (LB 642) in white paint stripe
at S. edge of pavement.
3. 95' 89.00'. SSet PK Nail and Trav.
Pt. Disc (LB 642) in white paint stripe
at S. edge of pavement.



N.E. Cor. Sec.3, Twp.41S., Rge.26E.
 Set PK Nail & Disc (LB 642), ±3'N.
 of S. edge of pavement and 9'S. of
 the Centerline of Bermont Road.

Field Book: LB-33, Page 4

SURVEYORS CERTIFICATE:

I certify the monument and accessories indicated above were field located on October 18, 2005

[Signature]
 SIGNATURE
Johnson Engineering, Inc.
 FIRM OR AGENCY
251 West Hickpochee (SR80)
 ADDRESS
La Belle, Florida 33935
 CITY STATE ZIP
(863) 612-9594 October 27, 2005
 PHONE-NUMBER DATE

4912
 PSM NO.
 642
 LB NO.

SEND ORIGINAL TO:
 Department of Environmental Protection
 Bureau of Surveying and Mapping
 3900 Commonwealth Boulevard
 Mail Station 105
 Tallahassee, Florida 32399

D.E.P. USE ONLY

Processed: 11-13-06 MB
 B.L.M. - I.D. 503700
 QUAD - I.D. 2414 telegraphswamp NW

EMBOSSSED SEAL OVER SIGNATURE