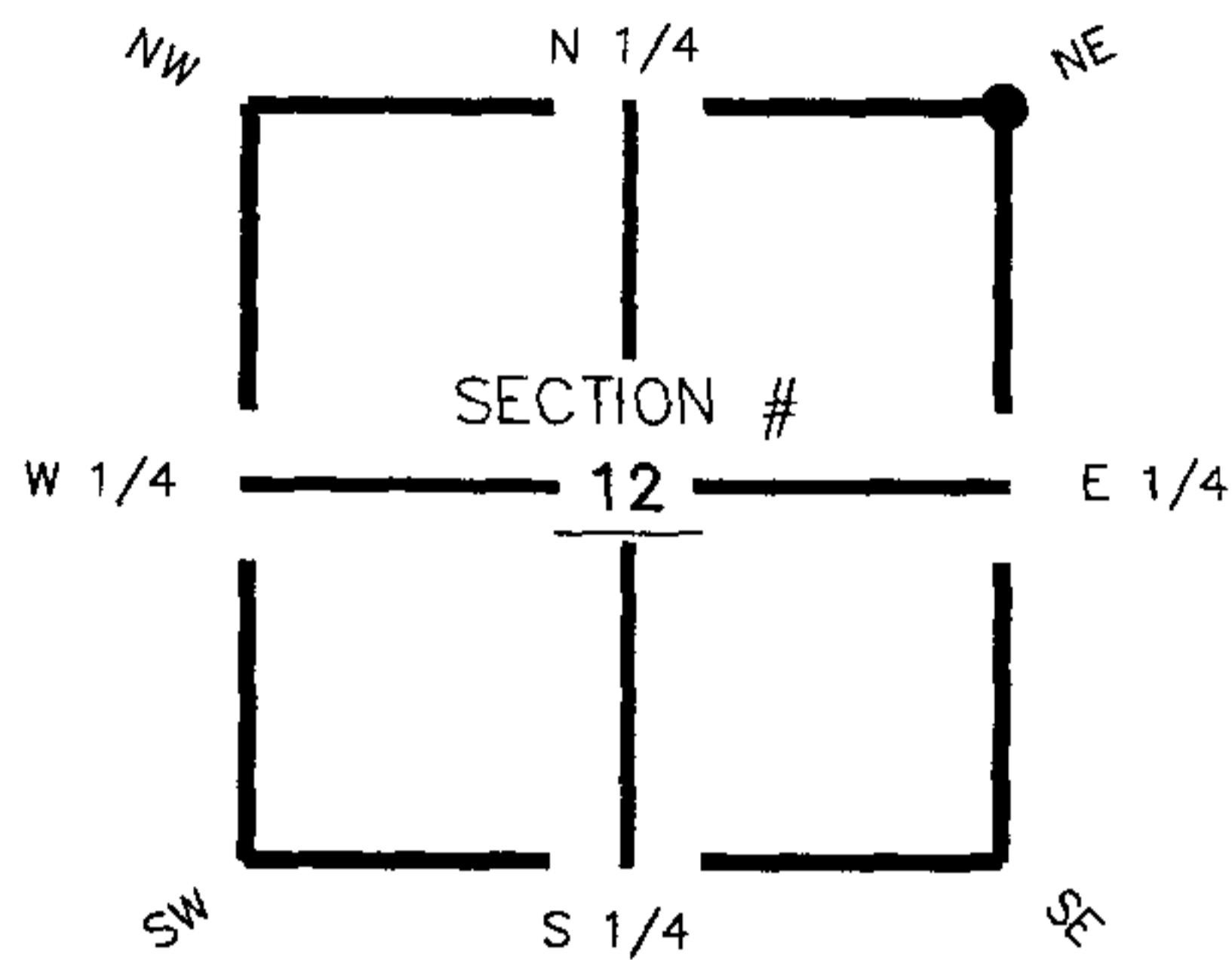


**FLORIDA DEPARTMENT OF ENVIRONMENTAL PROTECTION  
CERTIFIED CORNER RECORD**

DOC. # 089343

**CORNER DESCRIPTION:**      **MONUMENTATION DESCRIPTION (EVIDENCE FOUND OR METHOD TO SET)**

Depict corner with  E-25

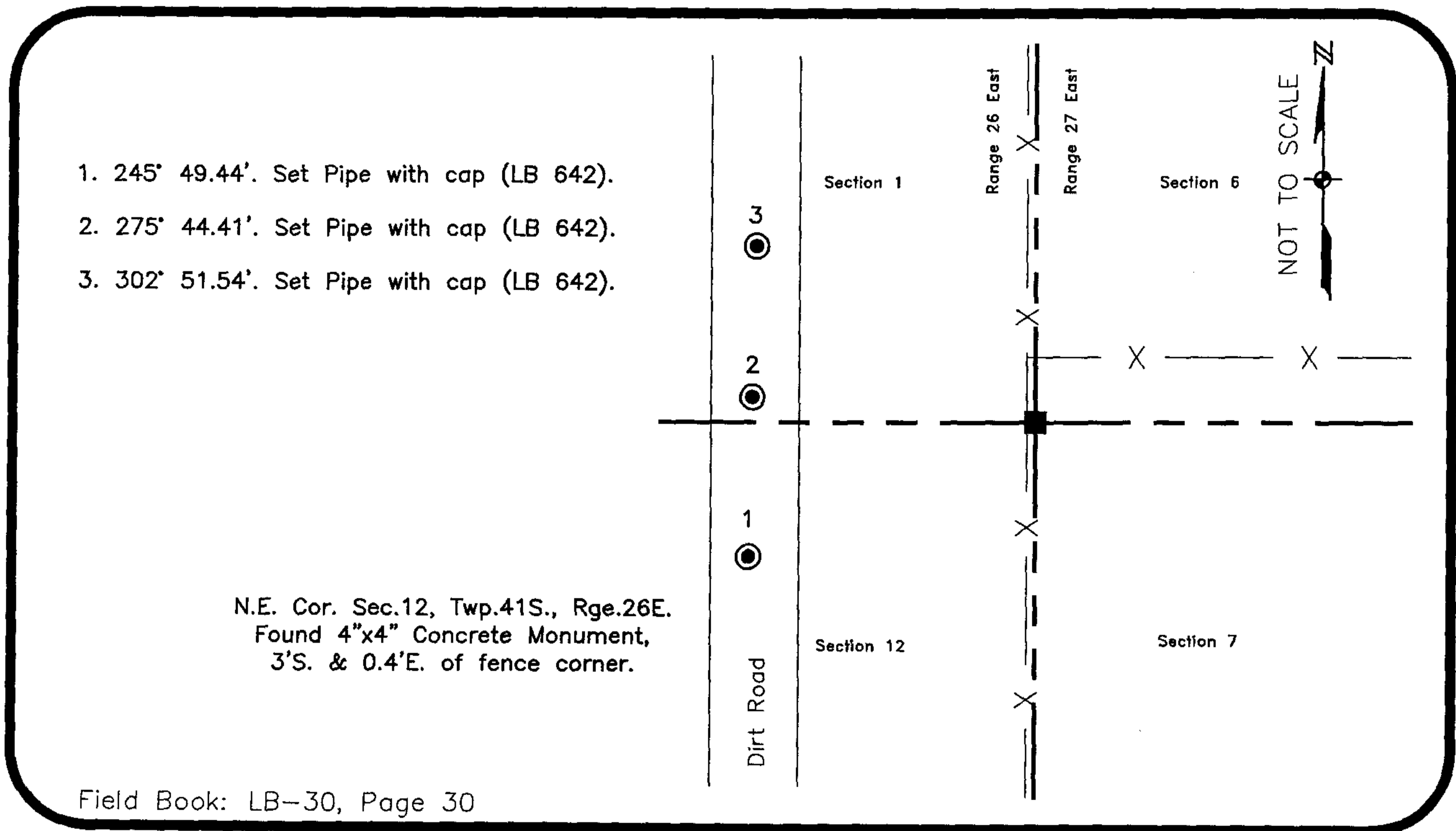


Found 4"x4"  
Concrete Monument

**HORIZONTAL POSITION INFORMATION ( if determined ):**

Latitude 26° 55' 50.25999" N Longitude 81° 39' 42.49647" W  
 Y(NORTHING-Ft.) 944101.62 X(EASTING-Ft.) 766357.60 Zone FL83-WF  
 Convergence 0° 09' 11.42635 Scale factor 0.999955097  
 Coordinate determination (circle one):      Field traverse  GPS  
 Horizontal datum (circle one):      NAD27    NAD83(1986)    NAD83(1999)    other (explain)  
 Accuracy (circle one):      1st    2nd    3rd    other \_\_\_\_\_

NE corner of Section 12  
 Twp 41 South , Rge 26 East  
 Tallahassee Base Meridian,  
Charlotte County(s), Florida



**SURVEYORS CERTIFICATE:**

I certify the monument and accessories indicated above were field located on August 22, 2005

*[Signature]*  
 SIGNATURE \_\_\_\_\_ 4912  
 JOHNSON ENGINEERING, INC. PSM NO. \_\_\_\_\_  
 251 West Hickpochee, (SR80) ADDRESS \_\_\_\_\_ 642  
 La Belle, Florida 33935 LB NO. \_\_\_\_\_  
 (863) 612-0594 PHONE NUMBER \_\_\_\_\_  
 October 27, 2005 DATE \_\_\_\_\_

SEND ORIGINAL TO:  
 Department of Environmental Protection  
 Bureau of Surveying and Mapping  
 3900 Commonwealth Boulevard  
 Mail Station 105  
 Tallahassee, Florida 32399

Processed: 11-13-06 MB  
 B.L.M. - I.D. 700600  
 QUAD - I.D. 2414 Telegraph Swamp NW

EMBOSSSED SEAL OVER SIGNATURE