

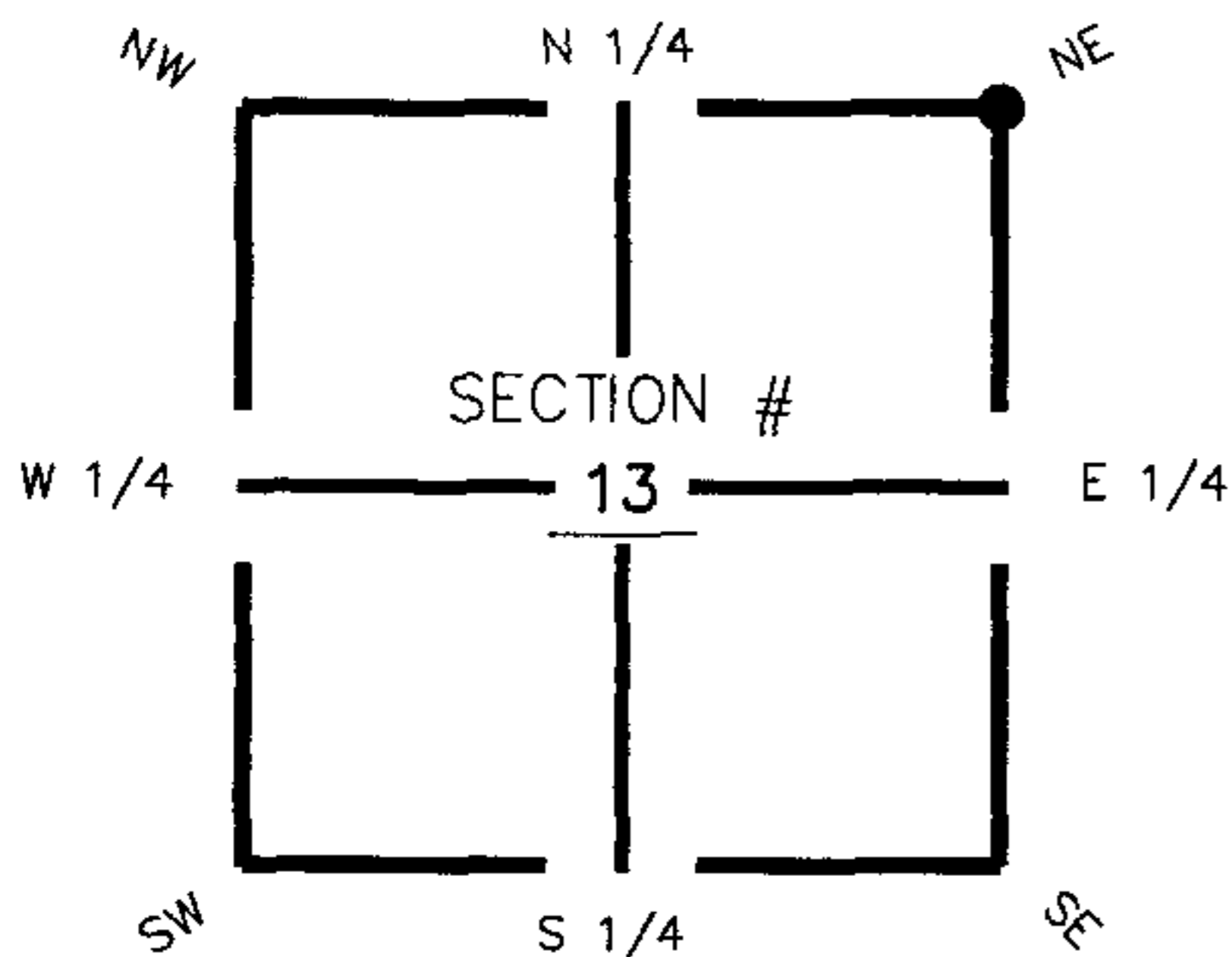
FLORIDA DEPARTMENT OF ENVIRONMENTAL PROTECTION

CERTIFIED CORNER RECORD

DOC. # 089344

CORNER DESCRIPTION: MONUMENTATION DESCRIPTION (EVIDENCE FOUND OR METHOD TO SET)

Depict corner with J-25



Found 4"x4"
Concrete Monument

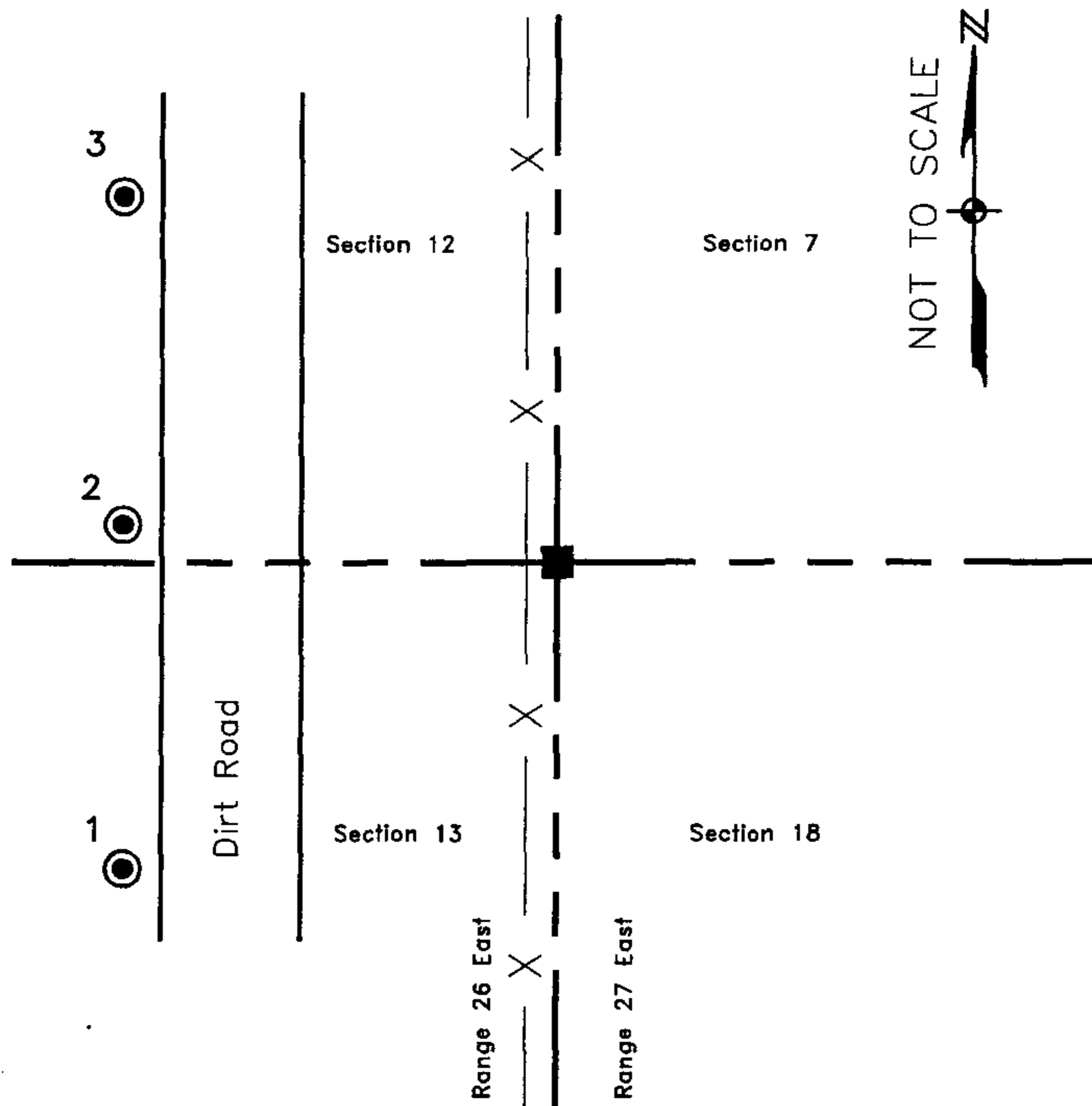
NE corner of Section 13
Twp 41 South, Rge 26 East
Tallahassee Base Meridian,
Charlotte County(s), Florida

HORIZONTAL POSITION INFORMATION (if determined):

Latitude 26° 54' 57.38839" N Longitude 81° 39' 42.92775" W
 Y(NORTHING-Ft.) 938762.86 X(EASTING-Ft.) 766332.83 Zone FL83-WF
 Convergence 0° 09' 10.95286 Scale factor 0.999955091
 Coordinate determination (circle one): Field traverse GPS
 Horizontal datum (circle one): NAD27 NAD83(1986) NAD83(1999) other (explain)
 Accuracy (circle one): 1st 2nd 3rd other _____

1. 235' 27.57'. Set Pipe with cap (LB 642).
2. 275' 20.75'. Set Pipe with cap (LB 642).
3. 310' 26.12'. Set Pipe with cap (LB 642).

N.E. Cor. Sec.13, Twp.41S., Rge.26E.
Found 4"x4" Concrete Monument, 0.5'E.
of N.-S. fence line.



Field Book: LB-30, Page 31

SURVEYORS CERTIFICATE:

I certify the monument and accessories indicated above were field located on August 22, 2005

[Signature]
 SIGNATURE
Johnson Engineering, Inc.
 FIRM OR AGENCY
251 West Hickpachie (SR80)
 ADDRESS
La Belle NO. 49 Florida 33935
 CITY STATE ZIP
(863) 612-0594 October 27, 2005
 PHONE NUMBER DATE

SEND ORIGINAL TO:
 Department of Environmental Protection
 Bureau of Surveying and Mapping
 3900 Commonwealth Boulevard
 Mail Station 105
 Tallahassee, Florida 32399

D.E.P. USE ONLY

Processed: 11-13-06 YMB
 B.L.M. - I.D. 700500
 QUAD - I.D. 2414 Telegraph Swamp NW

EMBOSSSED SEAL OVER SIGNATURE