

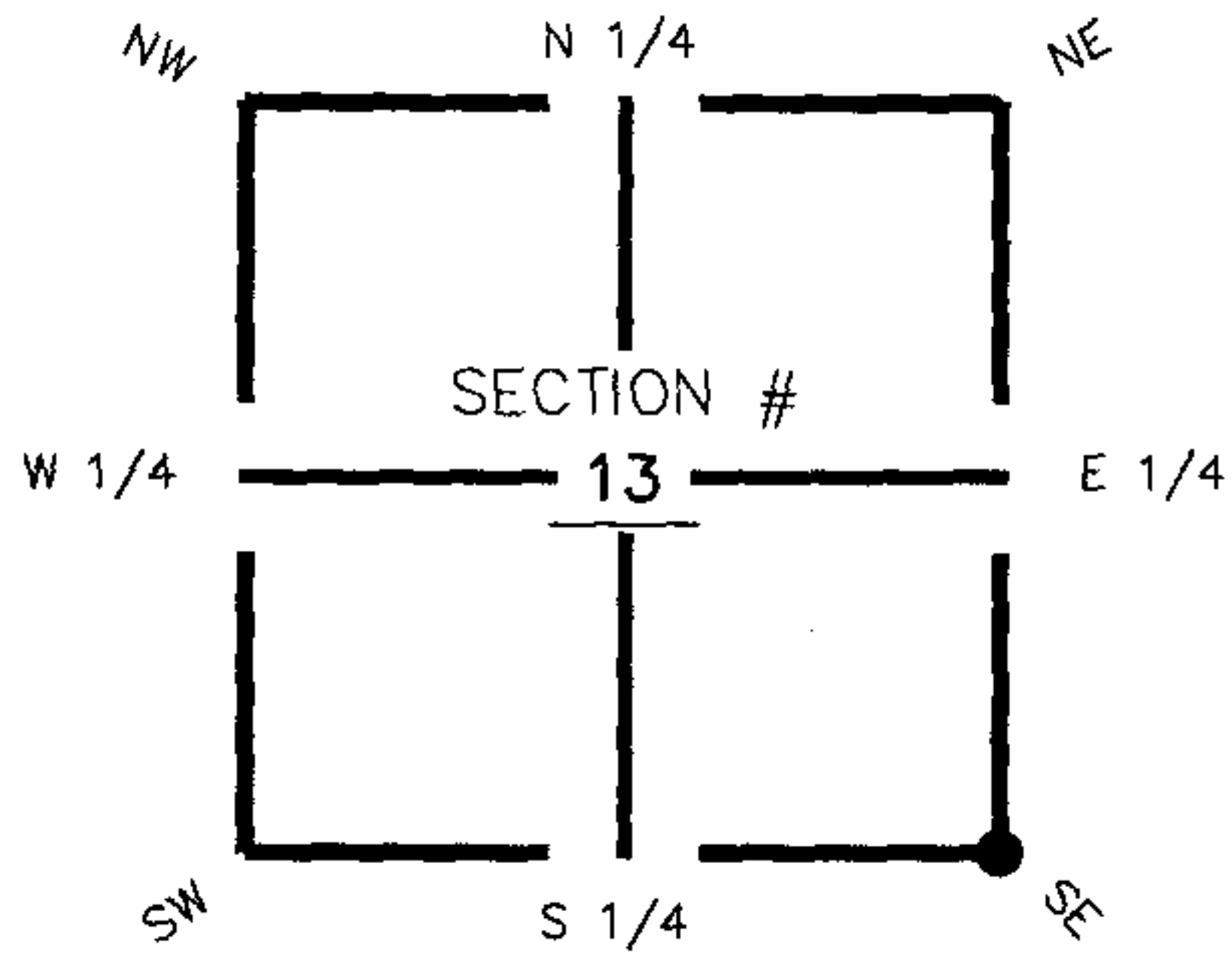
FLORIDA DEPARTMENT OF ENVIRONMENTAL PROTECTION
CERTIFIED CORNER RECORD

089345

DOC. # _____

CORNER DESCRIPTION: MONUMENTATION DESCRIPTION (EVIDENCE FOUND OR METHOD TO SET)

Depict corner with N-25



Found 4"x4"
Concrete Monument

HORIZONTAL POSITION INFORMATION (if determined):

Latitude 26° 54' 04.59576" N Longitude 81° 39' 43.33861" W

Y(NORTHING-Ft.) 933432.09 X(EASTING-Ft.) 766309.87 Zone FL83-WF

Convergence 0° 09' 10.48918 Scale factor 0.999955085

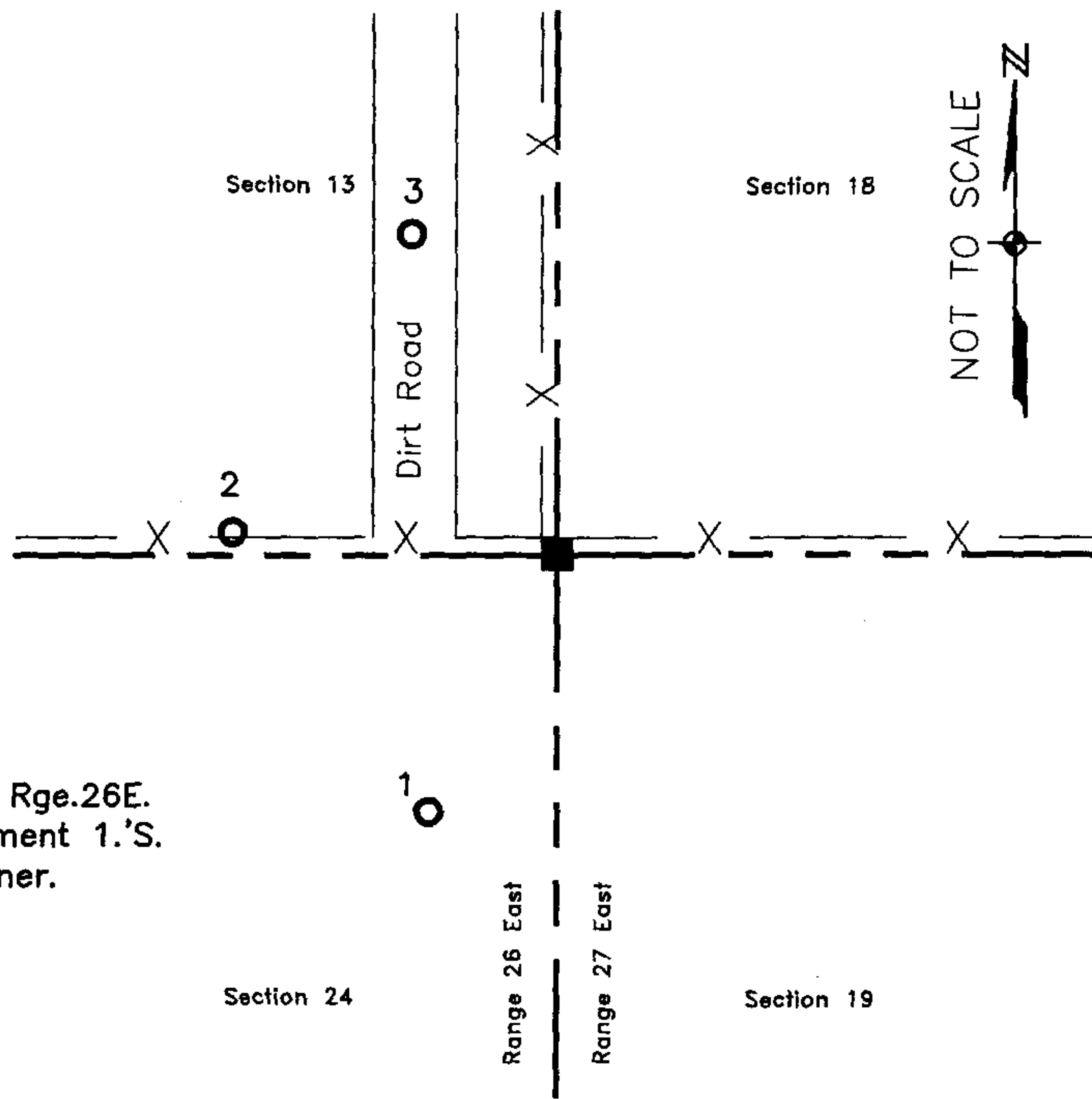
Coordinate determination (circle one): Field traverse GPS

Horizontal datum (circle one): NAD27 NAD83(1986) NAD83(1999) other (explain)

Accuracy (circle one): 1st 2nd 3rd other _____

SE corner of Section 13
Twp 41 South , Rge 26 East
Tallahassee Base Meridian,
Charlotte County(s), Florida

1. 200° 22.58'. Set Pipe with Cap (LB 642).
2. 275° 15.43'. Set Pipe with Cap (LB 642).
3. 350° 30.54'. Set Pipe with Cap (LB 642).



S.E. Cor. Sec.13, Twp.41S., Rge.26E.
Found 4"x4" Concrete Monument 1.'S.
& 0.5'E. of fence corner.

Field Book: LB-30, Page 32

SURVEYORS CERTIFICATE:

I certify the monument and accessories indicated above were field located on August 22, 2005

[Signature]
SIGNATURE _____ 4912
JOHNSON ENGINEERING, INC. PSM NO. _____
FIRM OR AGENCY _____ 642
251 West Hitchpochee (SR80) ADDRESS _____ LB NO. _____
La Belle CITY NO. 4912 STATE OF Florida 33935 ZIP
(863) 612-0594 PHONE NUMBER DATE October 27, 2005

EMBOSSED SEAL OVER SIGNATURE

SEND ORIGINAL TO:
Department of Environmental Protection
Bureau of Surveying and Mapping
3900 Commonwealth Boulevard
Mail Station 105
Tallahassee, Florida 32399

Processed: 11-13-06 MB
B.L.M. - I.D. 700400
QUAD - I.D. 2414 Telegraph Swamp NW