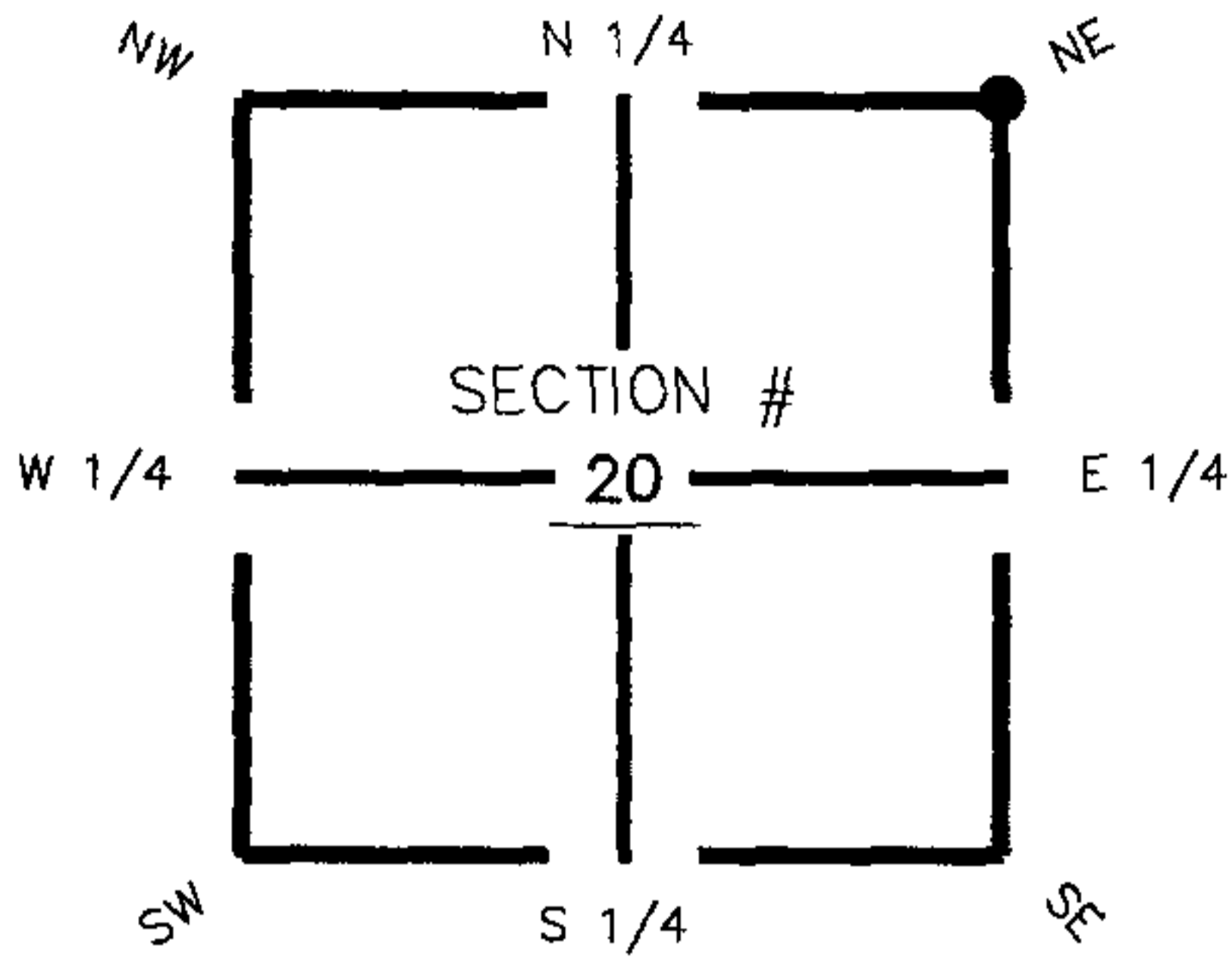


FLORIDA DEPARTMENT OF ENVIRONMENTAL PROTECTION CERTIFIED CORNER RECORD

DOC. # 089349

CORNER DESCRIPTION: MONUMENTATION DESCRIPTION (EVIDENCE FOUND OR METHOD TO SET)

Depict corner with N-9



Found 4"x4" Concrete Monument with Brass Disc stamped Char. Co. Survey Dept.

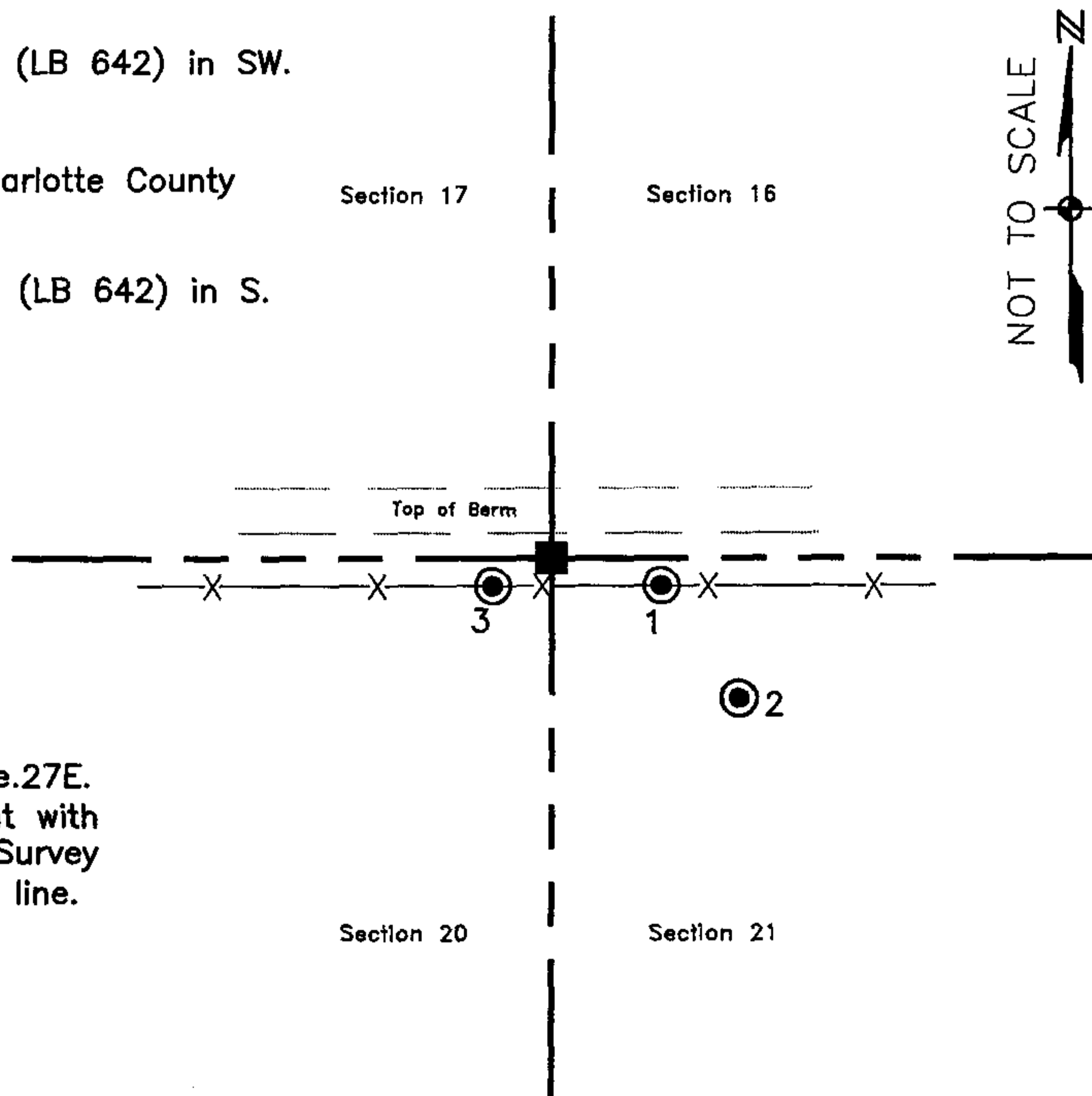
17|16
20|21

HORIZONTAL POSITION INFORMATION (if determined):

Latitude 26° 54' 03.19540" N Longitude 81° 37' 43.12705" W
 Y(NORTHING-Ft.) 933321.17 X(EASTING-Ft.) 777193.01 Zone FL83-WF
 Convergence 0° 10' 04.87304" Scale factor 0.999957969
 Coordinate determination (circle one): Field traverse GPS
 Horizontal datum (circle one): NAD27 NAD83(1986) NAD83(1999) other (explain)
 Accuracy (circle one): 1st 2nd 3rd other _____

NE corner of Section 20
Twp 41 South , Rge 27 East
 Tallahassee Base Meridian,
Charlotte County(s), Florida

1. 112° 17.28'. Set PK Nail and Trav. Pt. Disc (LB 642) in SW. face of fence post.
2. 145° 44.40'. Found 5" Iron Rod and cap Charlotte County Witness.
3. 252° 12.13'. Set PK Nail and Trav. Pt. Disc (LB 642) in S. face of fence post.



N.E. Cor. Sec.20, Twp.41S., Rge.27E.
 Found 4"x4" Concrete Monument with
 Brass Disc stamped Char. Co. Survey
 Dept. ±5'N. from E.-W. fence line.

Field Book: LB-31, Page 31

SURVEYORS CERTIFICATE:

I certify the monument and accessories indicated above were field located on August 24, 2005

[Signature]
 SIGNATURE _____ 4912
 JOHNSON ENGINEERING, INC.
 FIRM OR AGENCY _____ 642
 251 West Hickpochee (SR80)
 ADDRESS _____
 La Belle, Florida 33935
 CITY STATE ZIP
 (863) 612-0594 DATE OF _____ October 28, 2005
 PHONE NUMBER DATE

EMBOSSSED SEAL OVER SIGNATURE

SEND ORIGINAL TO:
 Department of Environmental Protection
 Bureau of Surveying and Mapping
 3900 Commonwealth Boulevard
 Mail Station 105
 Tallahassee, Florida 32399

D.E.P. USE ONLY
 Processed: 11-13-06 MB
 B.L.M. - I.D. 300400
 QUAD - I.D. 24M Telegraph Swamp NW