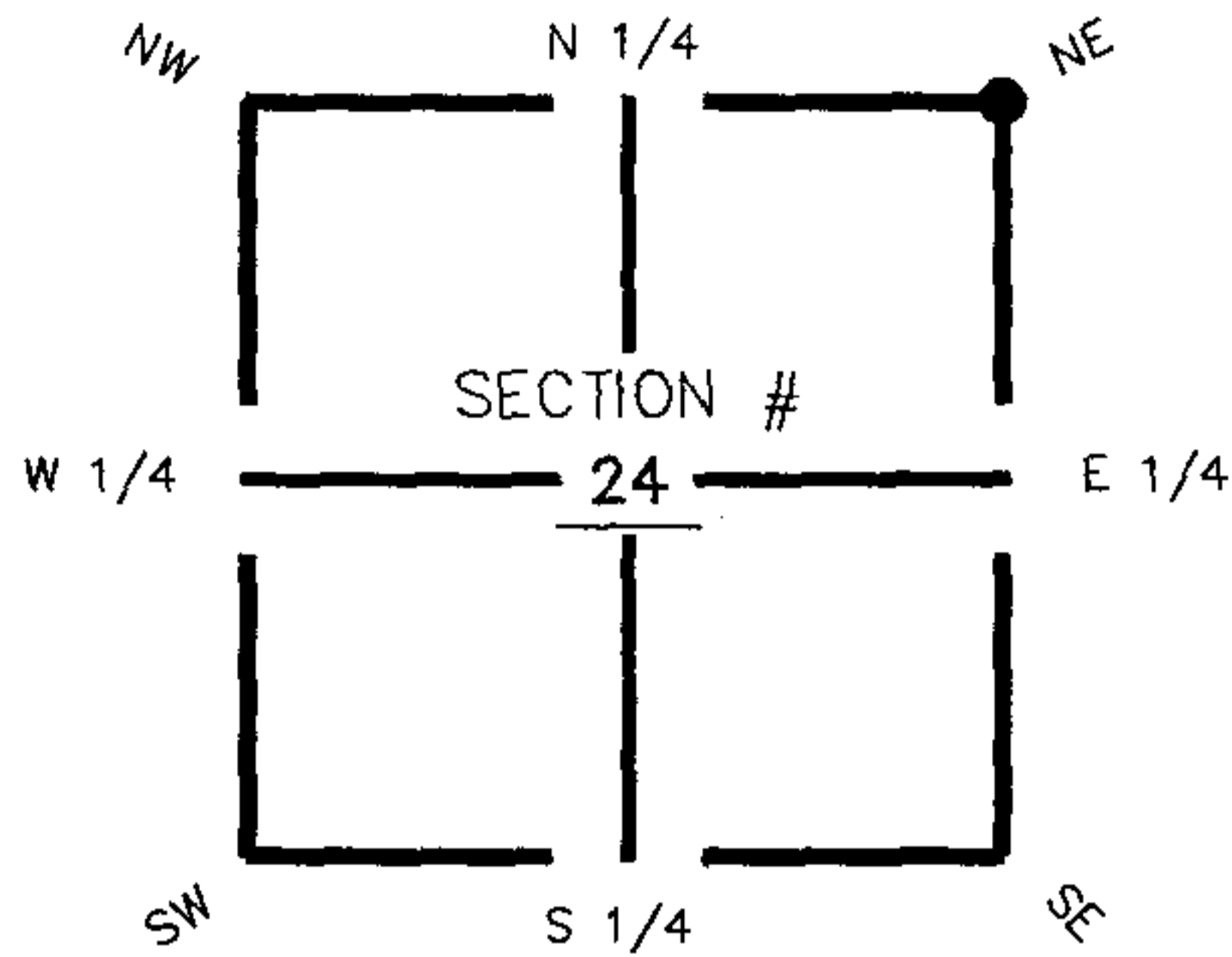


FLORIDA DEPARTMENT OF ENVIRONMENTAL PROTECTION CERTIFIED CORNER RECORD

DOC. # 089353

CORNER DESCRIPTION: **MONUMENTATION DESCRIPTION (EVIDENCE FOUND OR METHOD TO SET)**

Depict corner with N-25



Found 4" Round Concrete Monument with Disc, stamped (N.E. 24-41-27)

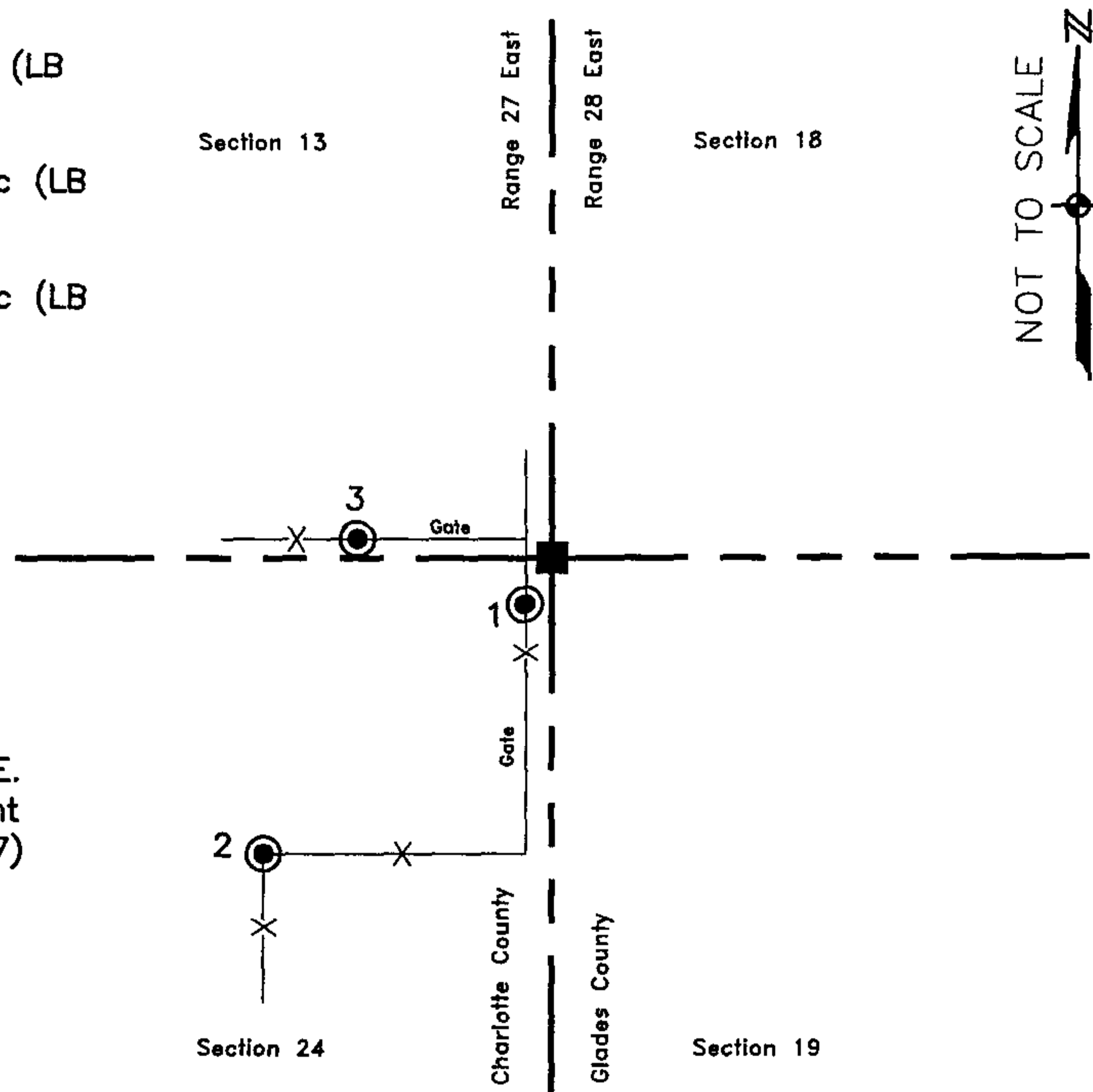
HORIZONTAL POSITION INFORMATION (if determined):

Latitude 26° 54' 02.64891" N Longitude 81° 33' 47.96614" W
 Y(NORTHING-Ft.) 933333.91 X(EASTING-Ft.) 798482.41 Zone FL83-WF
 Convergence 0° 11' 51.27182" Scale factor 0.999964397
 Coordinate determination (circle one): Field traverse GPS
 Horizontal datum (circle one): NAD27 NAD83(1986) NAD83(1999) other (explain)
 Accuracy (circle one): 1st 2nd 3rd other _____

NE corner of Section 24
Twp 41 South , Rge 27 East
 Tallahassee Base Meridian,
Charlotte County(s), Florida

1. 184' 8.45'. Set PK Nail and Trav. Pt. Disc (LB 642) in W. face of gate post.
2. 194' 33.92'. Set PK Nail and Trav. Pt. Disc (LB 642) in W. face of corner fence post.
3. 276' 20.87'. Set PK Nail and Trav. Pt. Disc (LB 642) in S. face of gate post.

N.E. Cor. Sec.24, Twp.41S., Rge.27E.
 Found 4" Round Concrete Monument
 with Disc, stamped (N.E. 24-41-27)
 0.4'E. & 0.5'S. of fence corner.



Field Book: LB-31, Page 27

SURVEYORS CERTIFICATE:

I certify the monument and accessories indicated above were field located on August 22, 2005

[Signature]
 SIGNATURE
Johnson Engineering, Inc.
 FIRM OR AGENCY
251 West Hickpochee (SR80)
 ADDRESS
La Belle Florida 33935
 CITY STATE ZIP
(863) 602-0394 October 28, 2005
 PHONE NUMBER DATE

4912
 PSM NO.
 642
 LB NO.

SEND ORIGINAL TO:
 Department of Environmental Protection
 Bureau of Surveying and Mapping
 3900 Commonwealth Boulevard
 Mail Station 105
 Tallahassee, Florida 32399

D.E.P. USE ONLY

Processed: 11-13-06 MB
 B.L.M. - I.D. 700400
 QUAD - I.D. 2413 Telegraph Swamp NE

EMBOSSSED SEAL OVER SIGNATURE