

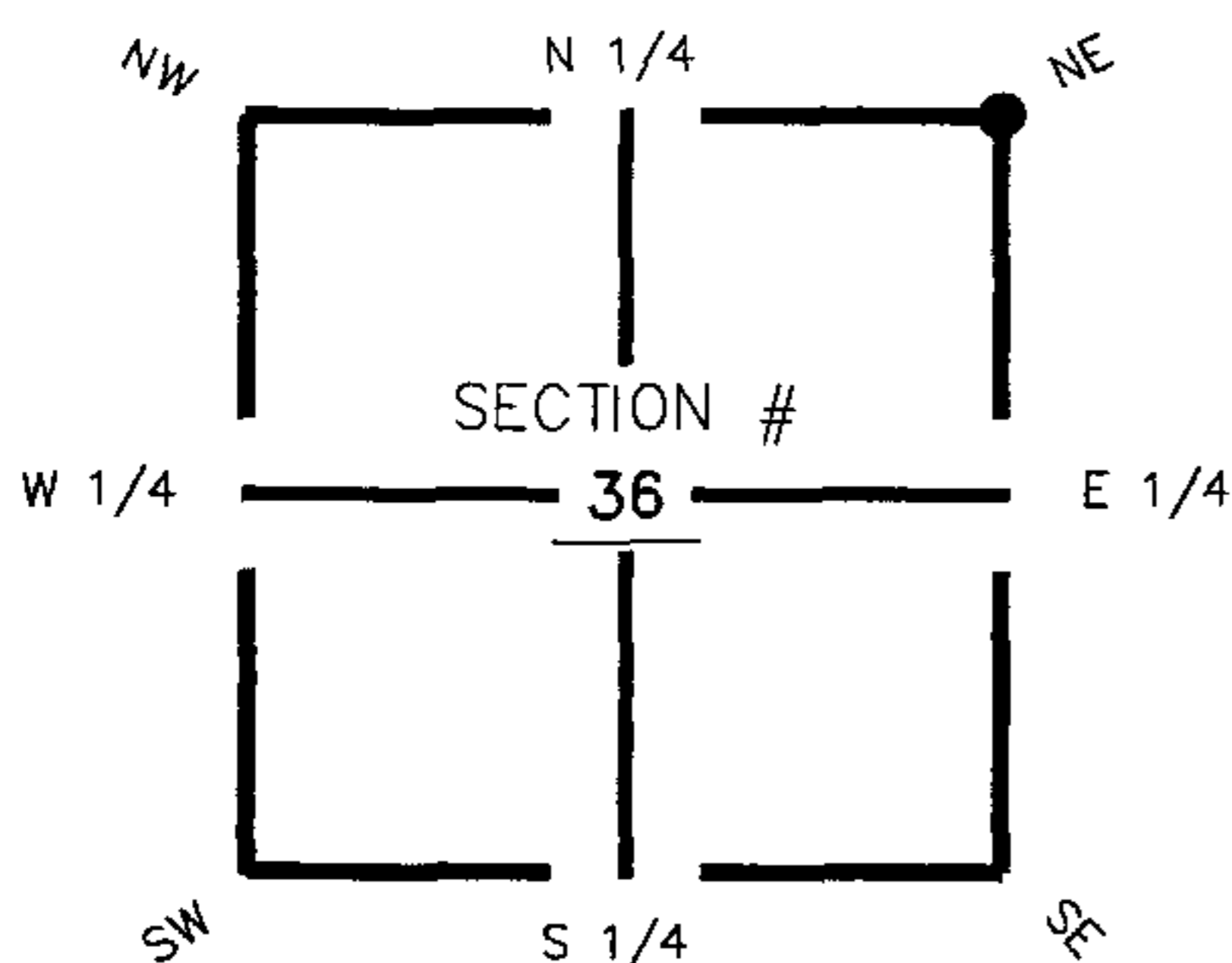
# FLORIDA DEPARTMENT OF ENVIRONMENTAL PROTECTION

## CERTIFIED CORNER RECORD

DOC. # 089357

**CORNER DESCRIPTION:** MONUMENTATION DESCRIPTION (EVIDENCE FOUND OR METHOD TO SET)

Depict corner with  V-25



Found 4" Round Concrete Monument  
with Disc, stamped (N.E. Cor.  
36-41-27)

**HORIZONTAL POSITION INFORMATION ( if determined ):**

Latitude 26° 52' 16.96183" N Longitude 81° 33' 49.17979" W  
 Y(NORTHING-Ft.) 922661.87 X(EASTING-Ft.) 798409.29 Zone FL83-WF  
 Convergence 0° 11' 50.00481" Scale factor 0.999964373  
 Coordinate determination (circle one): Field traverse  GPS  
 Horizontal datum (circle one): NAD27 NAD83(1986)  NAD83(1999) other (explain)  
 Accuracy (circle one): 1st  2nd 3rd other \_\_\_\_\_

NE corner of Section 36  
Twp 41 South, Rge 27 East  
 Tallahassee Base Meridian,  
Charlotte County(s), Florida

1. 2' 11.18'. Set PK Nail and Trav. Pt. Disc (LB 642) in W. face of 4" Pine tree.
2. 102' 30.15'. Set PK Nail and Trav. Pt. Disc (LB 642) in S. face of 6" Pine tree.
3. 243' 7.05'. Set PK Nail and Trav. Pt. Disc (LB 642) in N. face of fence post.

N.E. Cor. Sec.36, Twp.41S., Rge.27E.  
 Found 4" Round Concrete Monument  
 with Disc, stamped (N.E. Cor. 36-41-27).

Field Book: LB-31, Page 23

**SURVEYORS CERTIFICATE:**

I certify the monument and accessories indicated above were field located on August 22, 2005

*[Signature]*  
 SIGNATURE \_\_\_\_\_ 4912  
 JOHNSON ENGINEERING, INC. PSM NO.  
 FIRM OR AGENCY 642  
 251 West Hickpachie (SR80) LB NO.  
 ADDRESS \_\_\_\_\_  
 La Belle, Florida 33935  
 CITY STATE ZIP  
 (863) 612-0594 October 31, 2005  
 PHONE NUMBER DATE

SEND ORIGINAL TO:  
 Department of Environmental Protection  
 Bureau of Surveying and Mapping  
 3900 Commonwealth Boulevard  
 Mail Station 105  
 Tallahassee, Florida 32399

D.E.P. USE ONLY

Processed: 11-13-06 MB

B.L.M. - I.D. 700200

QUAD - I.D. 2313 Telegraph Swamp SE

EMBOSSSED SEAL OVER SIGNATURE