

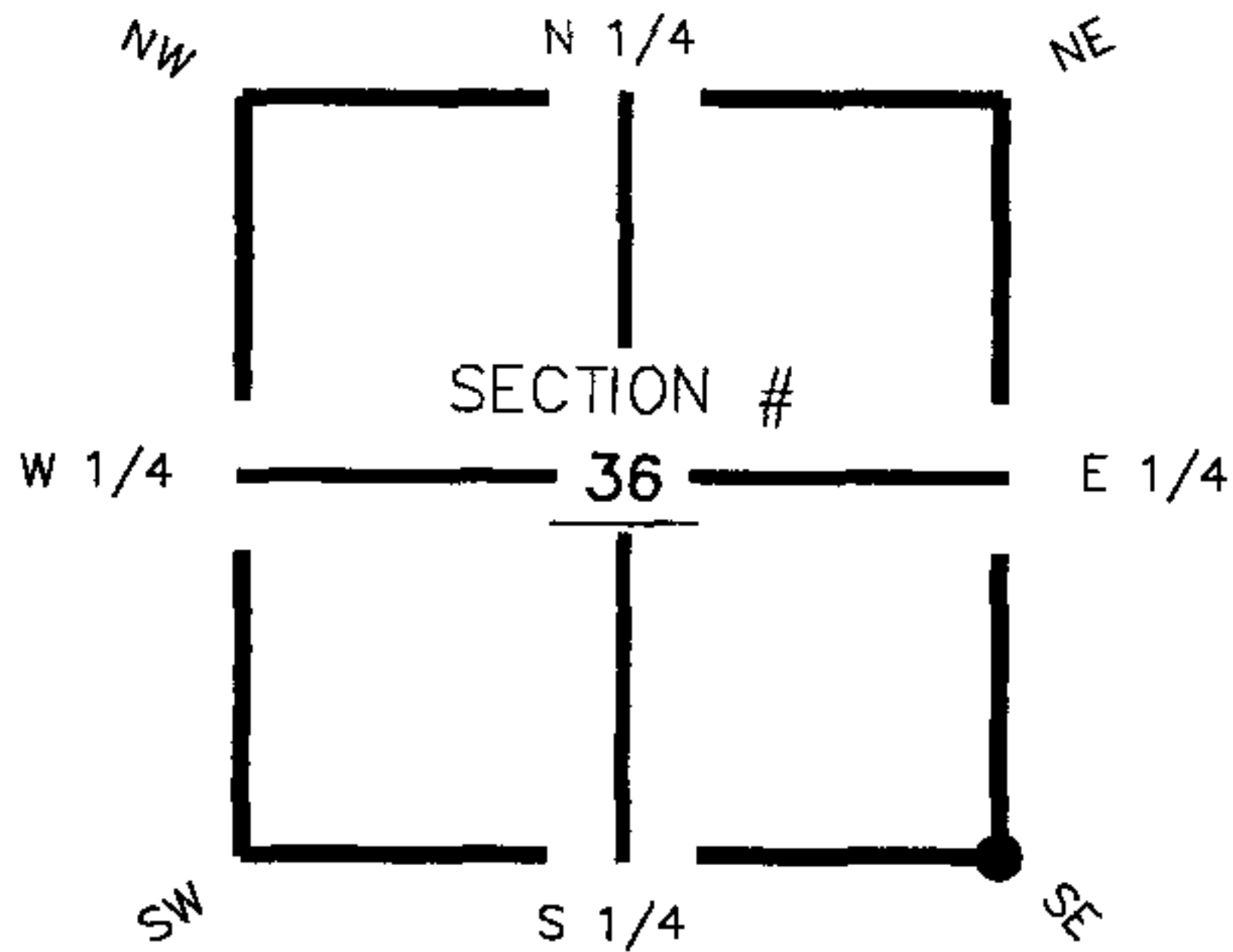
**FLORIDA DEPARTMENT OF ENVIRONMENTAL PROTECTION
CERTIFIED CORNER RECORD**

089359

DOC. # _____

CORNER DESCRIPTION: **MONUMENTATION DESCRIPTION (EVIDENCE FOUND OR METHOD TO SET)**

Depict corner with ● Z-25



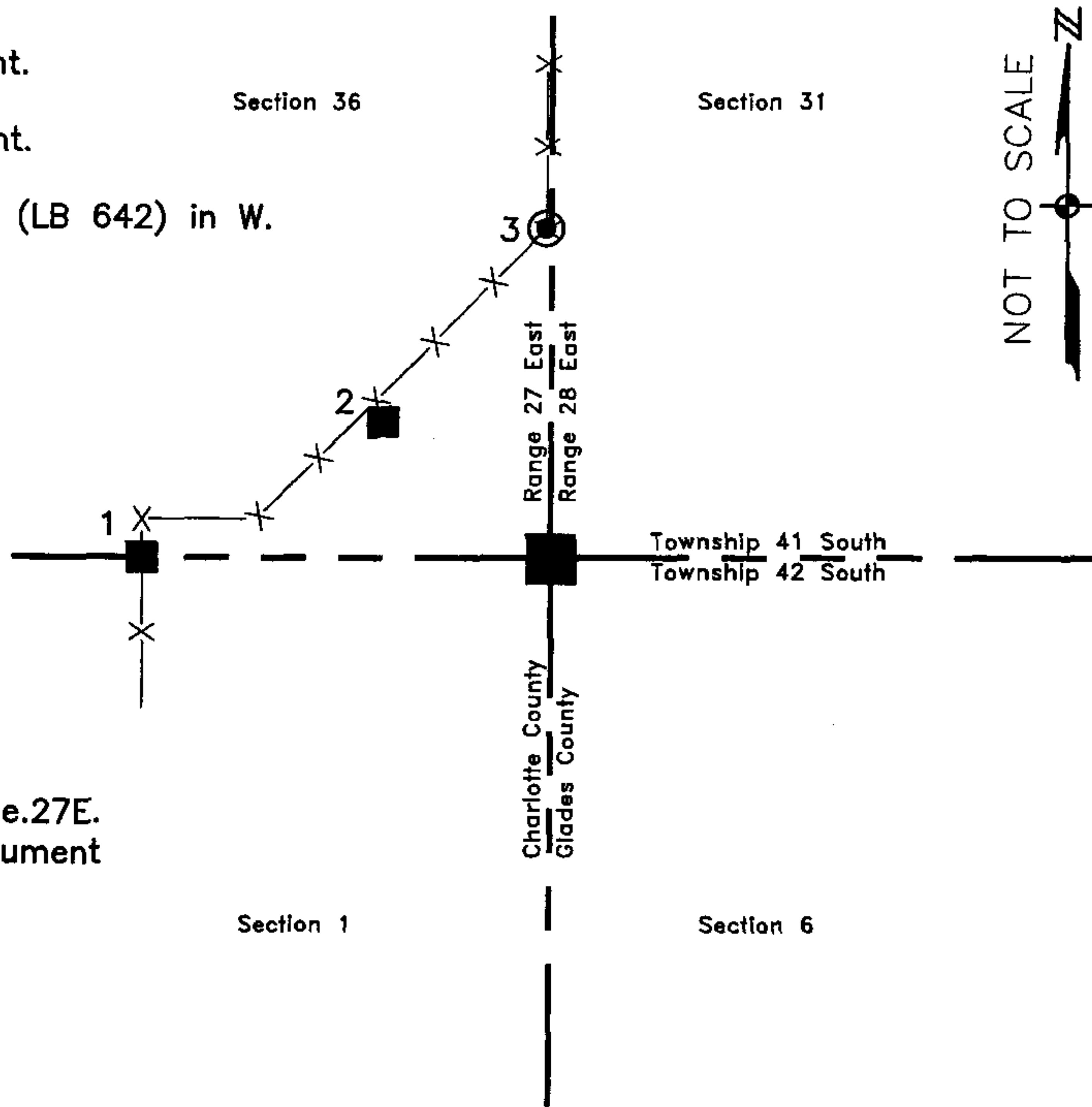
Found 4" Round Concrete Monument with Disc, (not legible)

HORIZONTAL POSITION INFORMATION (if determined):

Latitude 26° 51' 24.26642" N Longitude 81° 33' 49.99081" W
 Y(NORTHING-Ft.) 917340.76 X(EASTING-Ft.) 798354.15 Zone FL83-WF
 Convergence 0° 11' 49.28040" Scale factor 0.999964355
 Coordinate determination (circle one): Field traverse (GPS)
 Horizontal datum (circle one): NAD27 NAD83(1986) (NAD83(1999)) other (explain)
 Accuracy (circle one): 1st (2nd) 3rd other _____

SE corner of Section 36
 Twp 41 South , Rge 27 East
 Tallahassee Base Meridian,
Charlotte County(s), Florida

1. 270° 266.11'. Found 4"x4" Concrete Monument.
2. 309° 140.43'. Found 4"x4" Concrete Monument.
3. 359° 212.70'. Set PK Nail and Trav. Pt. Disc (LB 642) in W. face of fence post P.I.



S.E. Cor. Sec.36, Twp.41S., Rge.27E.
 Found 4" Round Concrete Monument with Disc, (not legible).

Field Book: LB-31, Page 20

SURVEYORS CERTIFICATE:

I certify the monument and accessories indicated above were field located on August 19, 2005

[Signature]
 SIGNATURE
 Johnson Engineering, Inc.
 FIRM OR AGENCY
 251 West Hickpochee (SR80)
 ADDRESS
 La Belle, Florida 33935
 CITY STATE ZIP
 (863) 812-0594
 PHONE NUMBER
 October 31, 2005
 DATE

SEND ORIGINAL TO:
 Department of Environmental Protection
 Bureau of Surveying and Mapping
 3900 Commonwealth Boulevard
 Mail Station 105
 Tallahassee, Florida 32399

Processed: 11-15-06 MRB
 B.L.M. - I.D. 700100
 QUAD - I.D. 2313 Telegraph Swamp E

EMBOSSSED SEAL OVER SIGNATURE