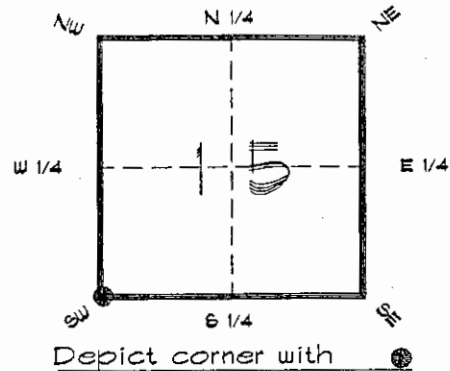


FLORIDA DEPARTMENT OF ENVIRONMENTAL PROTECTION
CERTIFIED CORNER RECORD

N13

CORNER DESCRIPTION:

S. W. corner of Section 15,
Twp 42 S., Rge 20 E.,
Tallahassee Base Meridian,
CHARLOTTE County(s), Florida.



MONUMENTATION DESCRIPTION:

Describe original monument and accessories, or subsequent restoration. Give sources of information. (If no attempt was made to search for the original monument and accessories, this information is not necessary.)

Description of corner evidence found:

2" IRON PIPE 0.3' BELOW GROUND

State method(s) to determine corner location (lost corners only):

HORIZONTAL POSITION INFORMATION (if determined):

Latitude 26°50'00.21040" N Longitude 82°17'33.77797" W

Y(Northing) 276978.126 m X(Easting) 170905.437 m Zone FLW

Convergence -0°07'55.676" Scale factor 0.99995162

Coordinate determination (circle one): Field traverse GPS

Horizontal datum (circle one): NAD27 NAD83(1986) NAD83(1990) other (explain)

Order of accuracy as defined in 'Standards and Specifications for Geodetic Control Networks' published by the Federal Geodetic Control Committee (circle one):

1st, 2nd, 3rd class

or Minimum Technical Standards (Chapter 21HH-6, F.A.C.) ratio of closure for field data (example 1:10,000), This does not specify an order of accuracy.

Control point(s) used for survey: CHARLOTTE COUNTY HORIZONTAL CONTROL NETWORK INCLUDES HAVOLINE 2, PLACIDA 2, W260, PUNTPORT, 4 FLGPS 58 AS B ORDER STATIONS.

Comments:

RECEIVED

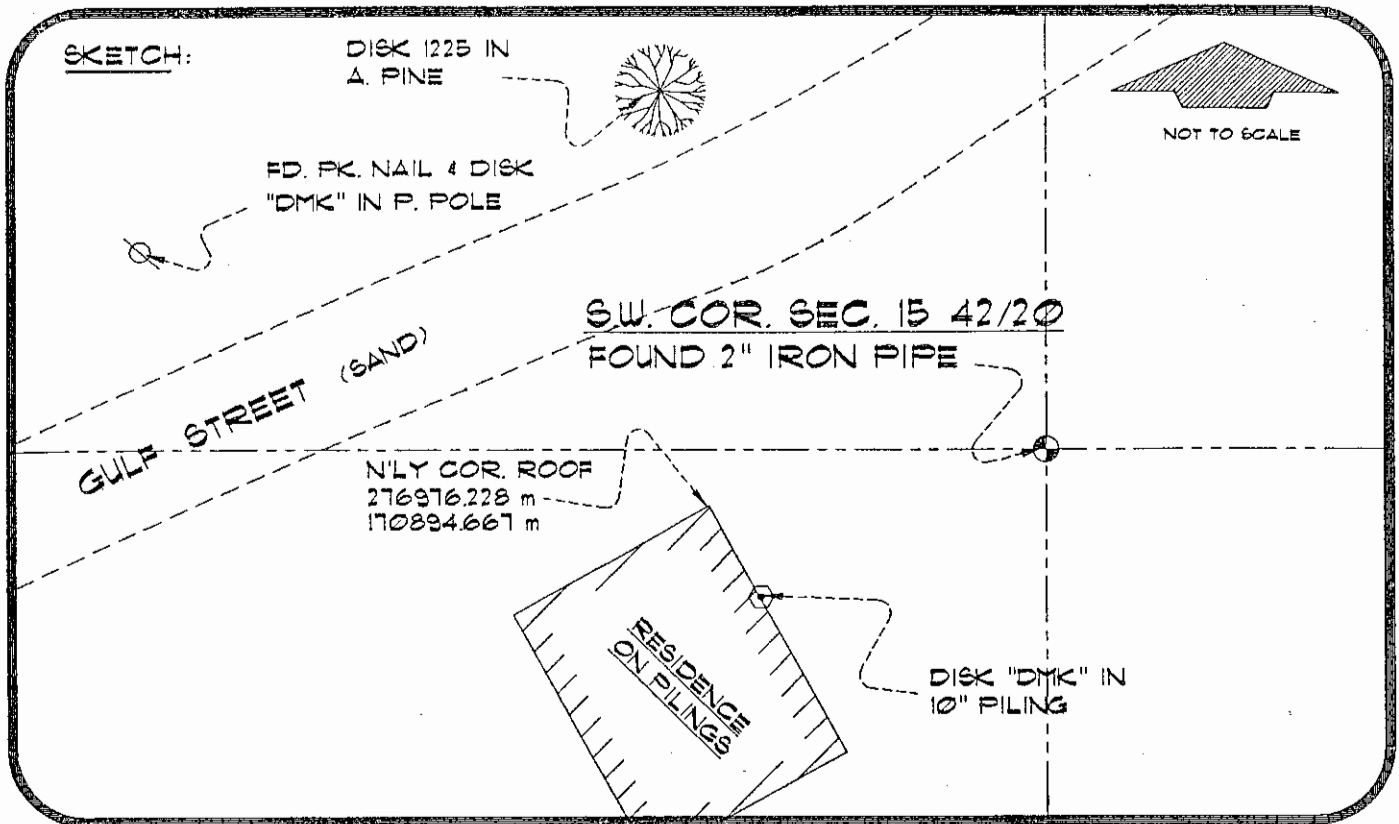
AUG 21 1995

SURVEY & MAPPING

4220N13

DOC. #

053771



BASIS OF BEARING (GRID) STATE PLANE FLA. WEST ZONE
 REFER: FB 315/07 SET SURVEY MARKER POST 3' S'LY

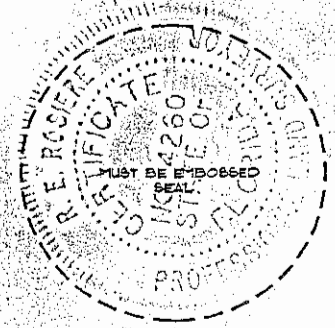
REFERENCE MEASUREMENTS

Description	Bearing	Distance
DISK "DMK" IN 10" PILING	S 62°02'51" W	36.70'
DISK "DMK" IN P. POLE	N 77°59'54" W	99.89'
DISK 1225 IN 16" A. PINE	N 46°36'39" W	56.20'
N'LY CORNER ROOF	S 80°00'21" W	35.88'

SURVEYORS CERTIFICATE: I certify the monument and accessories indicated above were field located on JULY 26, 1995

R. Rose PLS 4260
 SIGNATURE
August 15, 1995
 DATE
 CHARLOTTE COUNTY SURVEY DEPT.
 FIRM OR AGENCY
 1000 FLORIDA STREET
 ADDRESS
 PUNTA GORDA, FLA. 33950
 CITY STATE

475
 PUSCIDA



Completeness checked by: B. Linton
 Accepted and filed: 9-1-95 Date
 B.L.M. - I.D. 21161522 D.E.P. USE ONLY

SEND TO:
 Department of Environmental Protection
 Bureau of Survey and Mapping
 3900 Commonwealth Boulevard
 Mail Station 105
 Tallahassee, Florida 32399