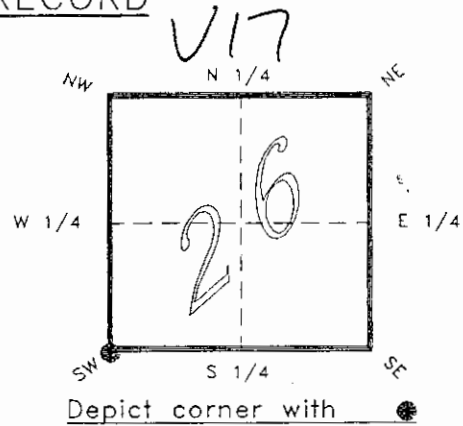


4220V17

FLORIDA DEPARTMENT OF ENVIRONMENTAL PROTECTION
CERTIFIED CORNER RECORD

CORNER DESCRIPTION:

S.W. corner of Section 26 ,
Twp 42 S. , Rge 20 E. ,
Tallahassee Base Meridian,
CHARLOTTE County(s), Florida.



MONUMENTATION DESCRIPTION:

Describe original monument and accessories, or subsequent restoration. Give sources of information. (If no attempt was made to search for the original monument and accessories, this information is not necessary.)

Description of corner evidence found:

NOT FOUND AND ASSUME DESTROYED BY LAKE EXCAVATION. POSITION DETERMINED FROM GRANDE QUAY SUBD. PLAT AND MONUMENTATION. REFER: P.B. 17 PG. 10B. NO ADDITIONAL MONUMENTATION SET AS CORNER FALLS IN LAKE.

State method(s) to determine corner location (lost corners only):

HORIZONTAL POSITION INFORMATION (if determined):

Latitude 26°48'15.70223" N Longitude 82°16'35.70161" W
Y(Northing) 273758.148 m X(Easting) 172501.914 m Zone FLW
Convergence -0°07'29.010" Scale factor 0.99995051

Coordinate determination (circle one): Field traverse GPS

Horizontal datum (circle one): NAD27 NAD83(1986) NAD83(1990) other (explain)

Order of accuracy as defined in "Standards and Specifications for Geodetic Control Networks" published by the Federal Geodetic Control Committee (circle one):
1st, 2nd, 3rd, class 1 ,

or Minimum Technical Standards (Chapter 21HH-6, F.A.C.) ratio of closure for field data (example 1:10,000), _____ . This does not specify an order of accuracy.

Control point(s) used for survey: CHARLOTTE COUNTY HORIZONTAL CONTROL NETWORK INCLUDES HAVOLINE 2, PLACIDA 2, W260, PUNTPORT, & FLGPS 58 AS B ORDER STATIONS.

Comments:

RECEIVED

JAN 31 1995

SURVEY & MAPPING

4220V17

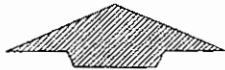
DOC. #

050946

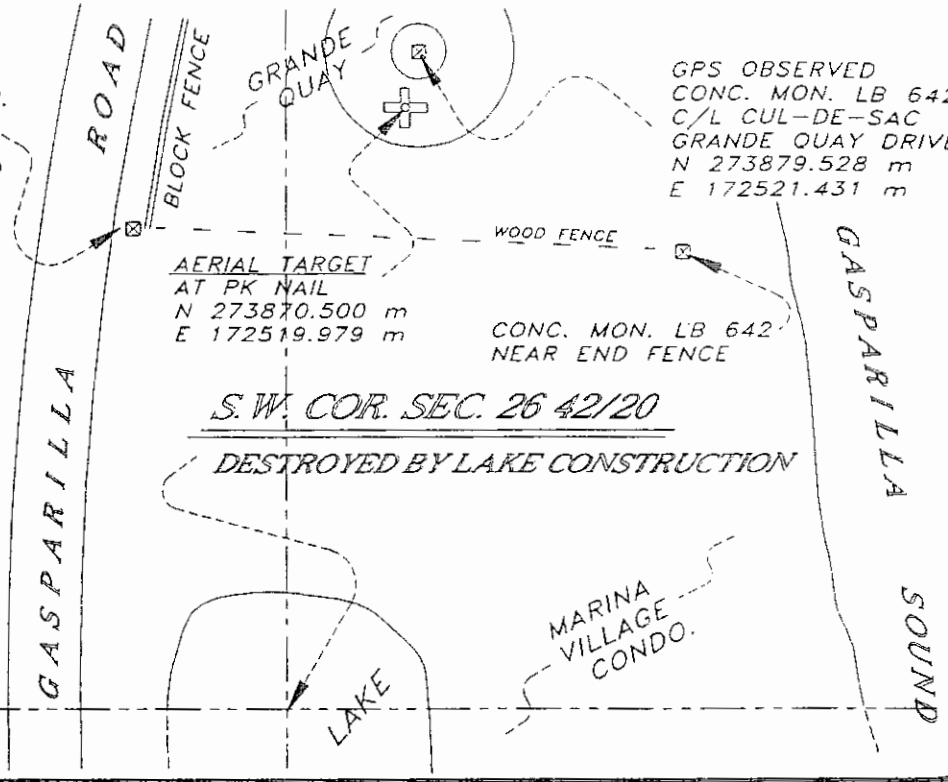
SKETCH:

FD. CONC. MON.
LB 642 AT
CORNER OF
BLOCK & WOOD
FENCE

GPS OBSERVED
CONC. MON. LB 642
C/L CUL-DE-SAC
GRANDE QUAY DRIVE
N 273879.528 m
E 172521.431 m



NOT TO SCALE



BASIS OF BEARING SOLAR OBSERVATION

REFER: FB 286/06

REFERENCE MEASUREMENTS

Description	Bearing	Distance
CONC. MON. LB 642	N 12°40'29" W	334.69'
CONC. MON. LB 642	N 29°31'44" E	357.84'
CONC. MON. LB 642	N 09°00'37" E	403.36'
	(N 09°08'05" E GRID)	
AERIAL TARGET	N 09°00'37" E	373.36'

SURVEYORS CERTIFICATE: I certify the monument and accessories indicated above were field located on DECEMBER 7, 19 93

R. Rose
SIGNATURE

PLS 4260

update 1/18/95

1/30/95
DATE

CHARLOTTE COUNTY SURVEY DEPT.

FIRM OR AGENCY

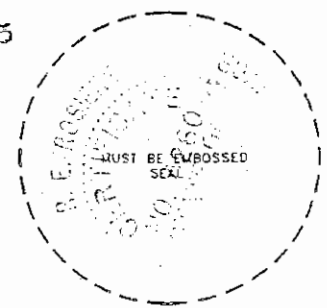
7000 FLORIDA STREET

ADDRESS

PUNTA GORDA, FLA. 33950

CITY

STATE



475

Completeness checked by: *B. Lantz*

Accepted and filed: *3-11-95*

B.L.M. - I.D. 34272635 Date

D.N.R. USE ONLY

SEND TO:

Department of Environmental Protection
Bureau of Survey and Mapping
3900 Commonwealth Boulevard
Mail Station 105
Tallahassee, Florida 32399