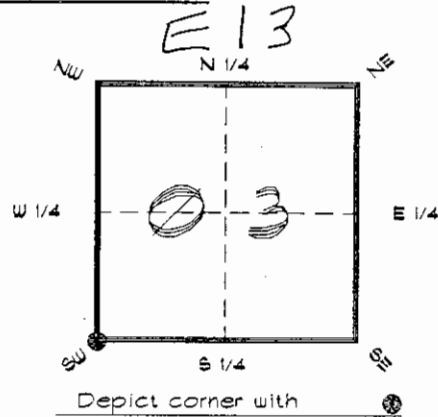


FLORIDA DEPARTMENT OF ENVIRONMENTAL PROTECTION
CERTIFIED CORNER RECORD

CORNER DESCRIPTION:

S.W. corner of Section 3
Twp 42 S., Rge 21 E.
Tallahassee Base Meridian,
CHARLOTTE County(s), Florida.



MONUMENTATION DESCRIPTION:

Describe original monument and accessories, or subsequent restoration. Give sources of information. (If no attempt was made to search for the original monument and accessories, this information is not necessary.)

Description of corner evidence found:

BROKEN CONCRETE MONUMENT

State method(s) to determine corner location (lost corners only):

HORIZONTAL POSITION INFORMATION (if determined):

Latitude 26°50'33.56838" N Longitude 82°12'24.72638" W

Y(Northing) 277987.971 m X(Easting) 179439.979 m Zone FLW

Convergence -0°05'36.276" Scale factor 0.99994639

Coordinate determination (circle one): Field traverse GPS

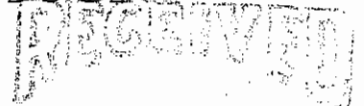
Horizontal datum (circle one): NAD27 NAD83(1986) NAD83(1990) other (explain)

Order of accuracy as defined in Standards and Specifications for Geodetic Control Networks published by the Federal Geodetic Control Committee (circle one): 1st, 2nd, 3rd, class

or Minimum Technical Standards (Chapter 61G17, F.A.C.) ratio of closure for field data (example 1:10,000), This does not specify an order of accuracy.

Control point(s) used for survey: CHARLOTTE COUNTY HORIZONTAL CONTROL NETWORK INCLUDES HAVOLINE 2, PLACIDA 2, W260, PUNTPORT, 4 FLGPS 58 AS B-ORDER STATIONS.

Comments:



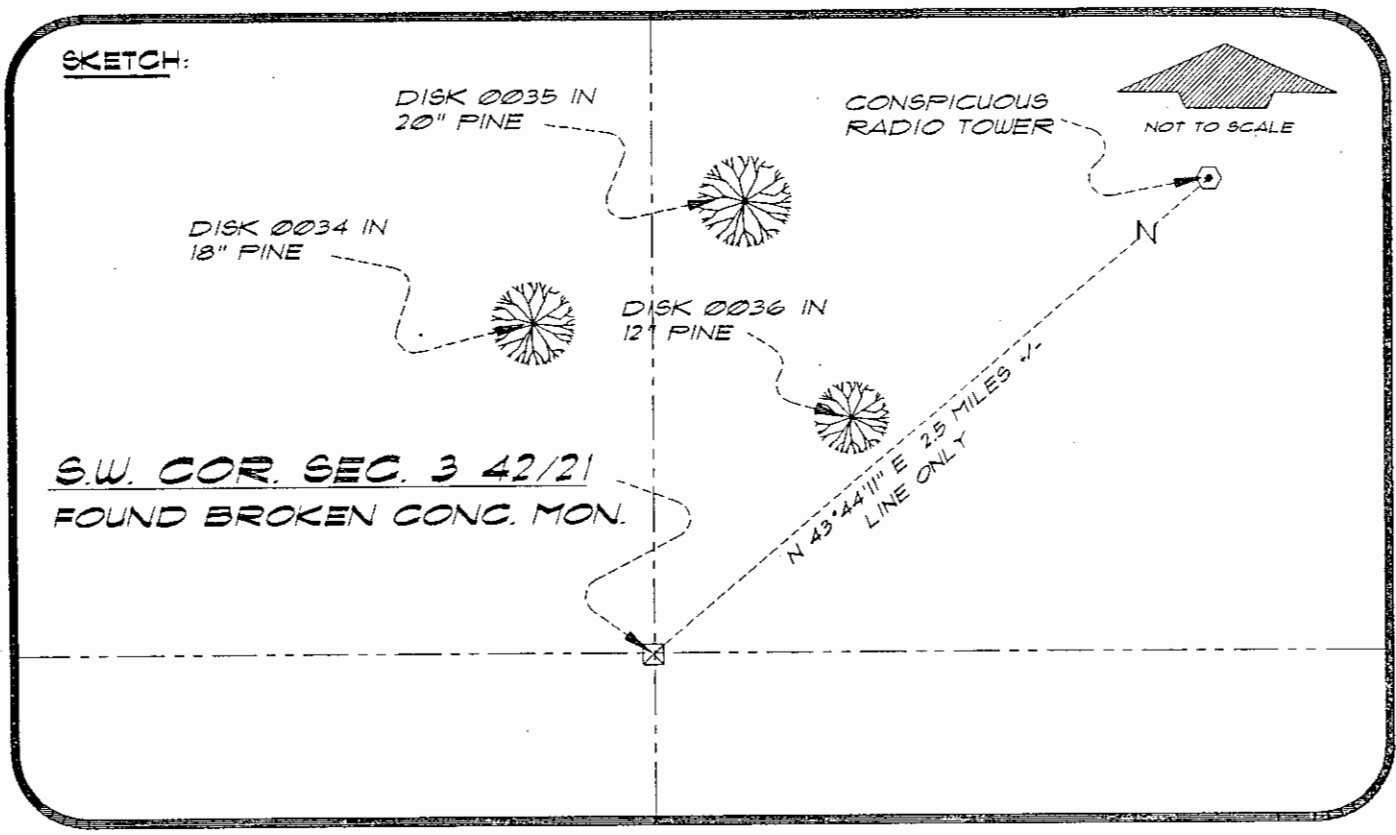
JUN 23 1994

SURVEY & MAPPING

0048819

422IE13

DOC. #



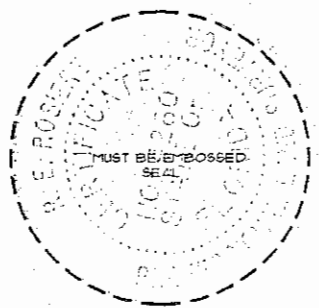
BASIS OF BEARING SOLAR OBSERVATION REFER: FB 280/06
 SET SURVEY MARKER POST 3.0' N'LY
REFERENCE MEASUREMENTS

| Description | Bearing | Distance |
|-----------------------|---------------|----------|
| DISK 0034 IN 18" PINE | N 11°42'11" W | 288.98' |
| DISK 0035 IN 20" PINE | N 08°38'16" E | 455.12' |
| DISK 0036 IN 12" PINE | N 35°46'23" E | 208.34' |

SURVEYORS CERTIFICATE: I certify the monument and accessories indicated above were field located on APRIL 7, 1992

R. P. Ross PLS 4260
 SIGNATURE
June 21, 1994
 DATE
CHARLOTTE COUNTY SURVEY DEPT.
 FIRM OR AGENCY
7000 FLORIDA STREET
 ADDRESS
PUNTA GORDA, FLORIDA 33950
 CITY STATE

474



Completeness checked by: B. Lenton
 Accepted and filed: 7-1-94
 Date
 BLM. - ID. 09040310 DEP. USE ONLY

SEND TO:
 Department of Environmental Protection
 Bureau of Survey and Mapping
 3900 Commonwealth Boulevard
 Mail Station 105
 Tallahassee, Florida 32399